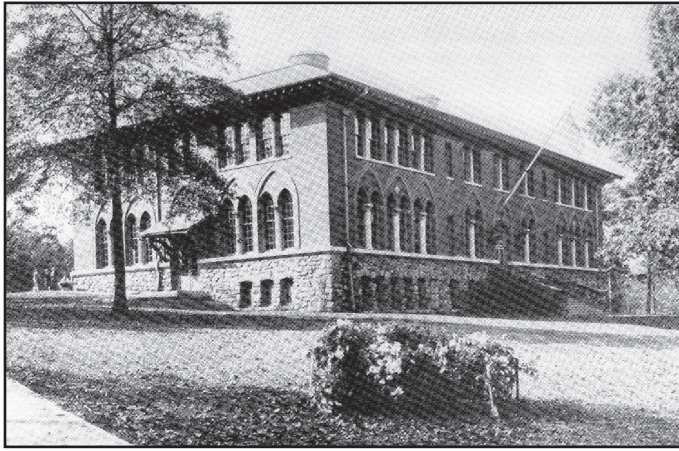


Siwanoy School



Prior to 1910, only eight grades of study were offered in the Pelham Public Schools. Those who chose advanced study attended high school in either Mount Vernon or New Rochelle. That all changed with the opening of Siwanoy School, which was both an elementary and high school.

Only a few homes surrounded this stately building, which consisted of only the current central portion when it opened. Raised wooden sidewalks connected to the streets so that students could avoid walking on the often wet and muddy ground.

Accounts of the first term's enrollment for the high school varies from one or two students up to 28. They were assigned to desks in the assembly hall and were taught by the new principal, Mr. Carmichael, who was later aided by new teachers.

In planning for the new high school, a space to teach domestic science was highly anticipated. "... One would be rash to deny the importance of this study in food values and food preparation being given to every girl above the 7th grade," said Supervising Principal Harry W. Rockwell.

By 1918, combined enrollment in all of the grammar schools was up to 1,000 students and 167 were enrolled in the high school. A separate high school building became necessary. In the next ten years, two wings were added to Siwanoy to accommodate the further increase in grammar school students.



A fifth grader using a new set of Compton's Picture Encyclopedia at Siwanoy in 1956. "Everybody in the room enjoys them and reads them in their spare time. I think that the encyclopedia is very interesting and I enjoy looking through it not only for information, but also to look at the pictures which are lovely," said one student at the time.

Clubs at Siwanoy

In the 1950s, Siwanoy students enjoyed a variety of clubs sponsored by their teachers, including:

Travel Club - students made passports, learned about different countries and visited the *S.S. United States*.

Girls Handicraft Club - students made leather change purses, comb cases and key cases.

Boys Handiwork Club - students made footstools and other objects.

Rhyme in Time Club - students wrote poems about nature, make believe, religious thoughts, and things that could happen.

Fun Club - students did magic tricks, had puppet shows, and played games such as Bingo and Go to the Head of the Class.

Science Club - students did experiments and talked about science.

Glee Club and Orchestra - students interested in music performed.



Siwanoy Rhyme in Time Club, 1956.



Siwanoy Greek play, 1929.