

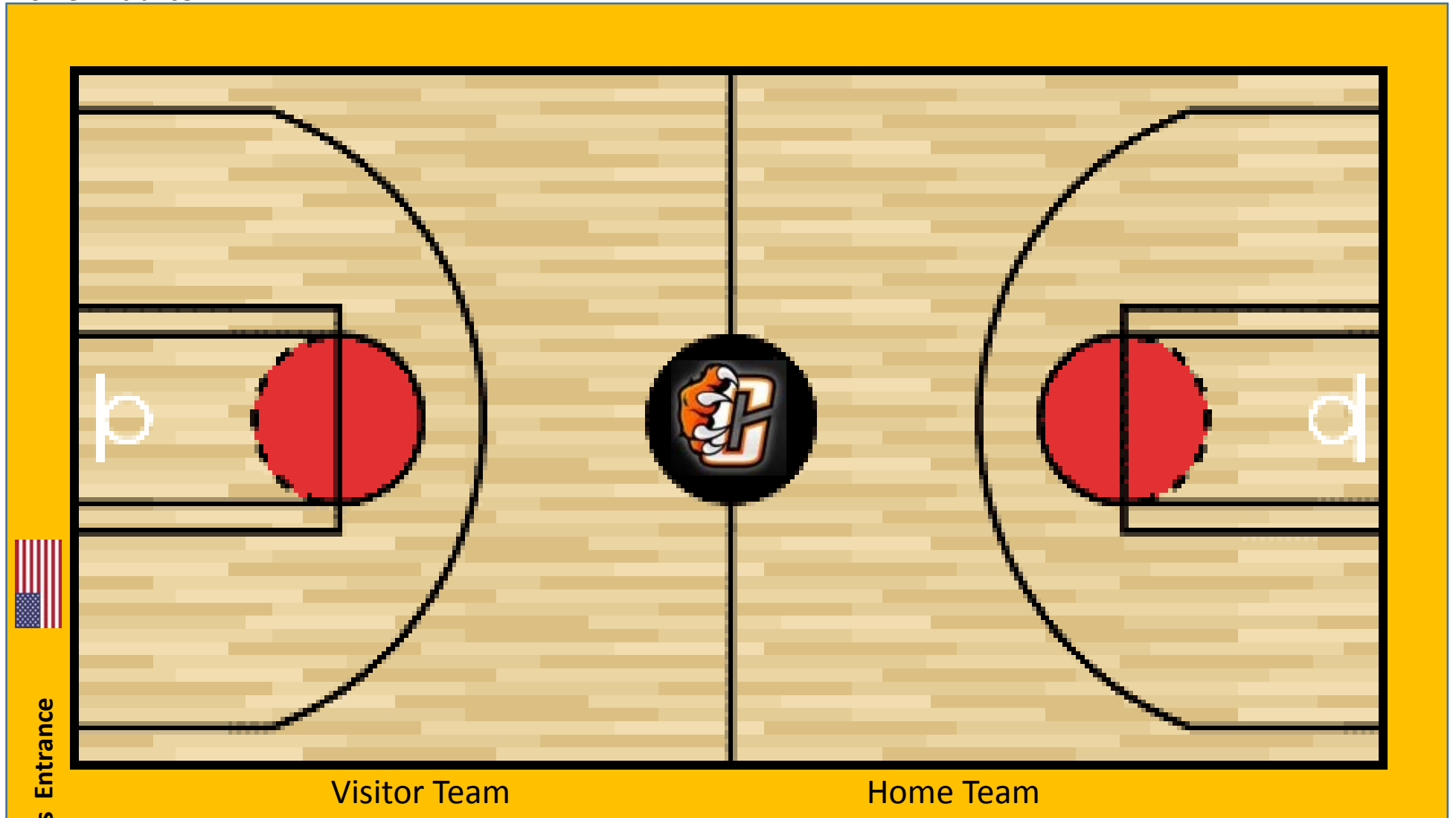
Event Notes:

- ❖ Home side is at the north end of the gym.
- ❖ Visitor's side at the south end of the gym.
- ❖ Halftime activities
- ❖ Put
- ❖ More
- ❖ Items
- ❖ Here
- ❖ As
- ❖ Much
- ❖ As
- ❖ You
- ❖ need

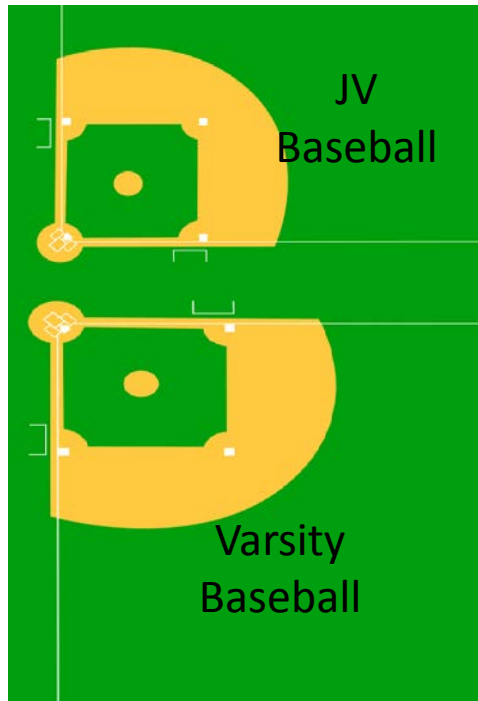
Home Seating

Student Seating

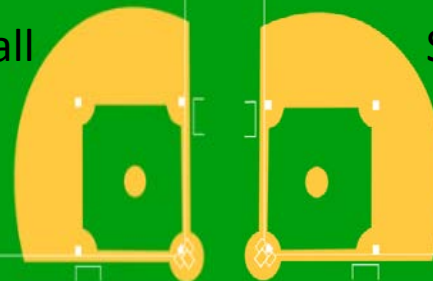
Home Entrance



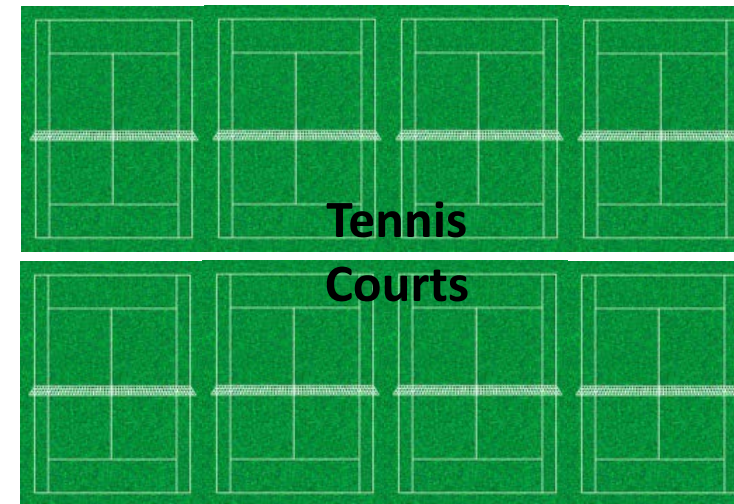
Visitor's Seating



JV
Softball

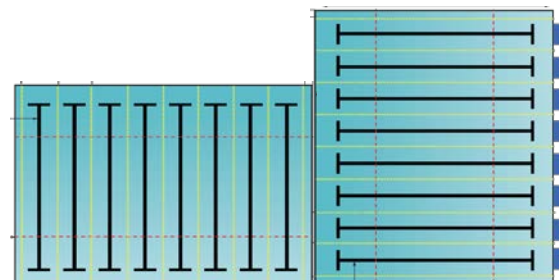


Varsity
Softball



Tennis
Courts

NOTES HERE



Aquatics

Visitor's team Bus Parking
(in front Aquatic)

Entrance



Bus Entrance

West Dakota Avenue

North Cornelia Avenue