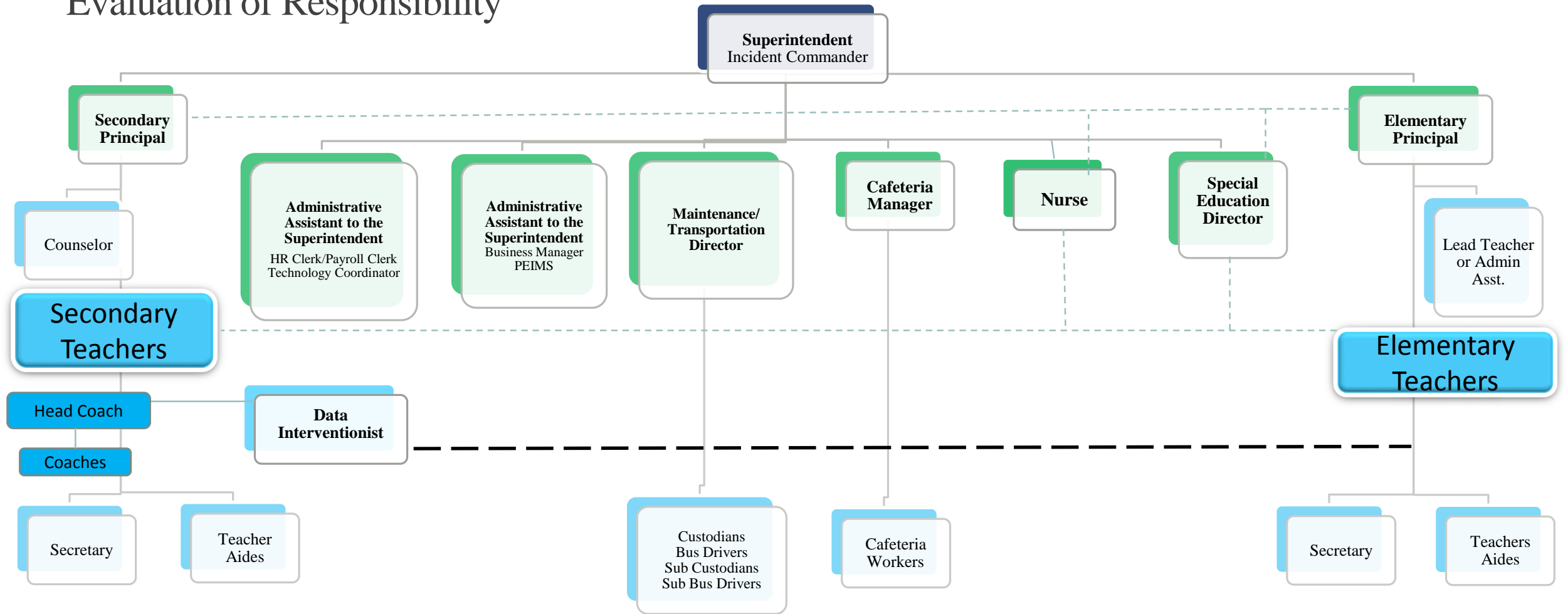


BURKEVILLE ISD

Organizational Chart & Emergency Line of Succession Evaluation of Responsibility



****In the event of the Superintendent's absence, disability, or unavailability in a crisis or emergency situation:**

- 1) Secondary Principal will assume authority of Superintendent and leadership of the district until Superintendent becomes available or the Board Appoints another leader.
- 2) If the Secondary Principal is unavailable or incapacitated under these conditions the Elementary Principal will fill this position.

Green-evaluations by Supt.
Blue-evaluations by campus
principal or supervisor
- - Advisory role

Revised: 8/17/2015