



DISTRICT LEADERSHIP TEAM SUPERINTENDENT UPDATE

Friday, January 27, 2023

Dr. Khalek Kirkland, Superintendent
Dr. Mickisha McKoy, Deputy Superintendent



AGENDA

Welcome – Dr. Khalek Kirkland, Superintendent

Department of State and Federal Educational Policy – Devin Thornburg and Jenna Krueger

- **Finalizing the 2022-23 District Comprehensive Education Plan (DCEP)**
- **January 9-19:** DSL Chiefs and OSFEP Team reviewed the preliminary DCEPs and provided supportive feedback.
- **January 20:** Superintendents received feedback on their DCEP.
- **January 20-31:** DLTs and HS Superintendents/stakeholder representatives revise 2022-23 DCEP based on feedback received.
- **Final DCEP Due for Posting by February 27th.**

Superintendent Update – Dr. Khalek Kirkland

District 23 schools establish a culture of joy, high expectations, critical thinking, and cultural competence in partnership with our families and school communities. We emphasize equitable and welcoming learning environments where every child will receive high-quality instruction every day.



VISION

Ensuring that our vision is realized, D23 is committed to **E.Q.U.I.T.Y.**

Empowering our families and communities as partners in our scholars' success

Quality instruction and high expectations that we envision for our own children

Utilizing innovative ideas and resources to optimize scholars' academic and social-emotional learning experiences

Instruction that focuses on the science of reading, cultivates academic excellence, and character development

Tapping into scholars' unique abilities and developing strengths that will create strong pathways to economic security

Yielding "off the chart" results across all schools



MISSION

SCHOOLWIDE EVENTS

Brooklyn North Borough Spelling Bee



INSTRUCTIONAL UPDATES

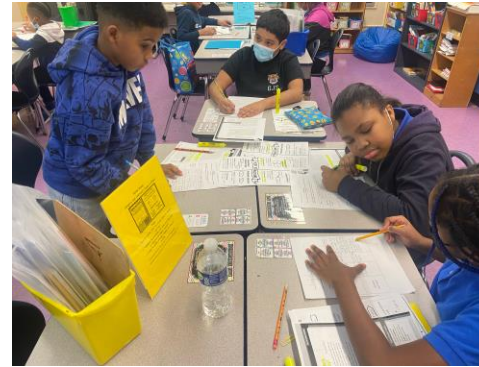
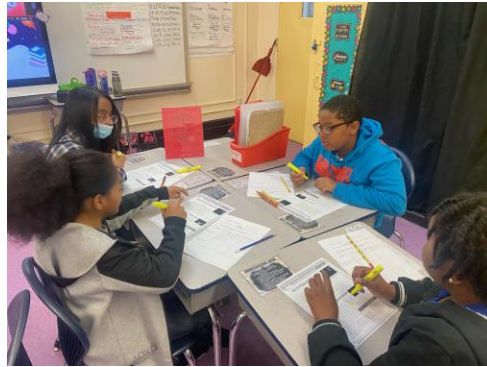
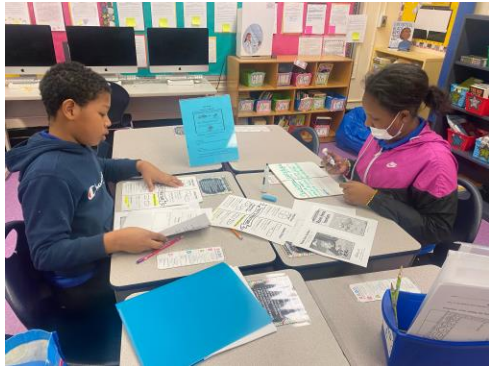
- **TIER I INTERVISITATIONS:** Tier I principals have opened-up their doors to share best practices with all principals in the district.
- **MATH COLLABORATIVE:** D23 is now working with the Math Collaborative team from Central to provide support through coaching, intervisitations, and workshops for teachers and principals.
- **RELAY GSE** is providing leadership coaching for two schools in the district.
- **AIM:** Cohorts I, II & III Early Adopters are meeting this month.
- **REGENTS PREP:** Middle Schools are currently working with Project Reset to ensure our 8th grade students take the regents exam and pass with high scores.
- **iREADY:** Testing for middle of the year (MOY) is underway.

INSTRUCTIONAL UPDATES

- **DYSLEXIA PILOT:** We are moving into Round II of the Dyslexia Pilot. Four new schools will receive support for Dyslexia screening.
- **ROUND II INSTRUCTIONAL SUPPORT:** Our Round I instructional support is coming to a close. Schools that have not received direct district support will receive targeted support during Round II.
- **ZEARN:** Zearn's digital teaching and learning tools reinforce core grade-level math concepts while providing in-the-moment support for each student. Students who used Zearn Math grew state math scores 2.5 times more than matched students who did not use Zearn Math.
- **AMIRA:** Amira is an AI tutor in a game that is proven to double the pace of reading growth for children ages 5 to 10. Amira recommends appropriately challenging stories, listens as a student reads aloud, and intervenes when helpful.

INSTRUCTION IN ACTION

Rigorous Conversations
PS 284



Career Day
PS 401



PS 323 & PS 150
Early Childhood Intervisitation



SCREENER & INTERIM ASSESSMENT WINDOWS

iReady i-Ready programs support every learner on their path toward grade-level success. By connecting to actionable, intuitive data, teachers know where to focus and students become more capable and engaged.	BOY – Sep. 9th – Oct. 18th MOY – Jan. 3rd – Feb. 10th EOY – May 1st – Jun. 7th	Grades 3-8 ELA, Grades K-8 Math
Acadience Acadience Reading makes it easier to detect K–6 students who are at risk for early reading difficulties in order to provide timely instructional support and prevent the occurrence of later reading difficulties.	BOY – Sep. 9th – Oct. 18th MOY – Jan. 3rd – Feb. 10th EOY – May 1st – Jun. 7th	Grades K-2 ELA
Devereux Student Strengths Assessment (DESSA) The DESSA is a brief questionnaire that asks about eight domains of student social-emotional wellness: personal responsibility, optimistic thinking, goal-directed behavior, social awareness, decision-making, relationship skills, self-awareness and self-management. The DESSA is entirely strength-based, which means that instead of focusing on deficits, it highlights a student's positive social and emotional strengths and builds from there.	May 8th	Grades K-8
District Interim Assessments ELA and math interim assessments will determine how students are performing on grade-level standards aligned to the NYS ELA and math exams.	IA # 1 – Jan. 17th – 24th IA # 2 – Feb. 13th – 20th IA (Mock) - Mar. 27th – 4th IA # 4 – June 12th - 16th	Grades K-8

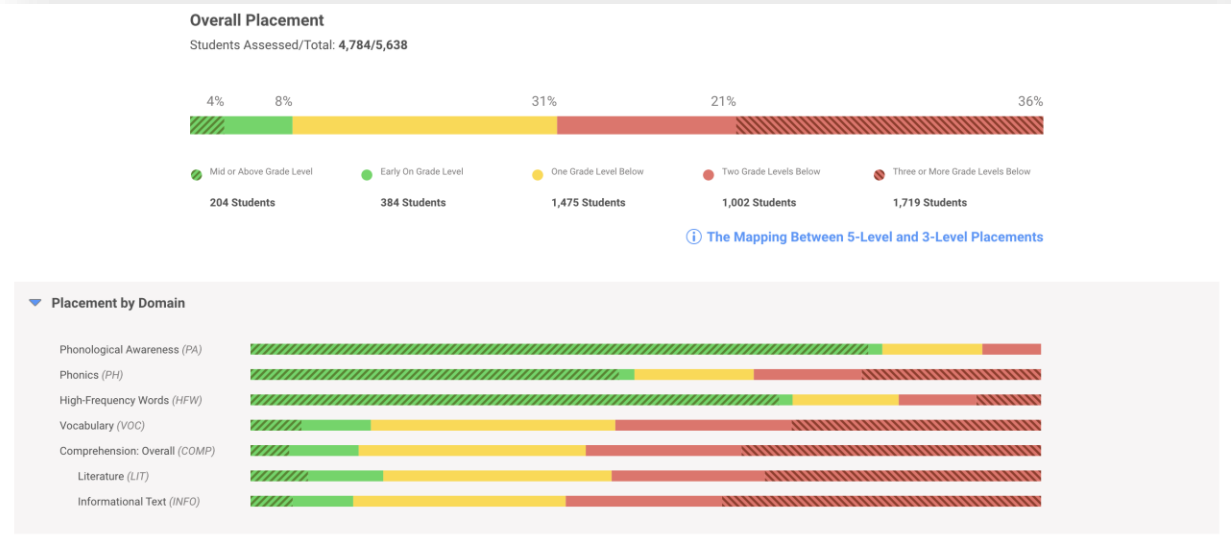
STATE ASSESSMENTS

ELA State exams are used to measure the extent to which individual students achieve the NYS learning standards in particular subjects and to determine whether schools, districts and the State meet the required progress targets specified in the NYS accountability system and in Every Student Succeeds Act (ESSA)	April 19th – 20th Make-up dates April 24th -28th	Grades 3 - 8
Math The tests are designed to provide important information about whether students are prepared to progress through school and graduate with the critical thinking, problem-solving, and reasoning skills they need for long-term success in school, college, careers, and life. The tests are just one of several measures our schools use to assess student progress: grades, report cards, writing samples, projects, assignments, and other performance-based student work are equally important.	May 2nd – 3rd Make-up dates May 4th – 11th	Grades 3 - 8
Science The Assessment in Science asks students to demonstrate scientific knowledge and to apply scientific concepts, formulate hypotheses, make predictions, or use other scientific inquiry techniques. The grade 8 written examination is timed. Grade 8 students have two hours to complete the written test. The assessments also include a one-hour laboratory performance examination, which tests students' skill using hands-on equipment and materials to answer specific questions.	Performance – May 23rd – June 2nd Written June 5th – Make-up date June 6th - 9th	Grades 4 ^(last year) and 8 • Next year sci will be administered to 5th and 8th
NYSESLAT The New York State English as a Second Language Achievement Test (NYSESLAT) is designed to annually assess the English language proficiency of all English Language Learners (ELLs) enrolled in Grades K–12 in New York State schools	Speaking – April 17th – May 26th Reading, Writing, & Listening - May 15th – 26th	All Grades

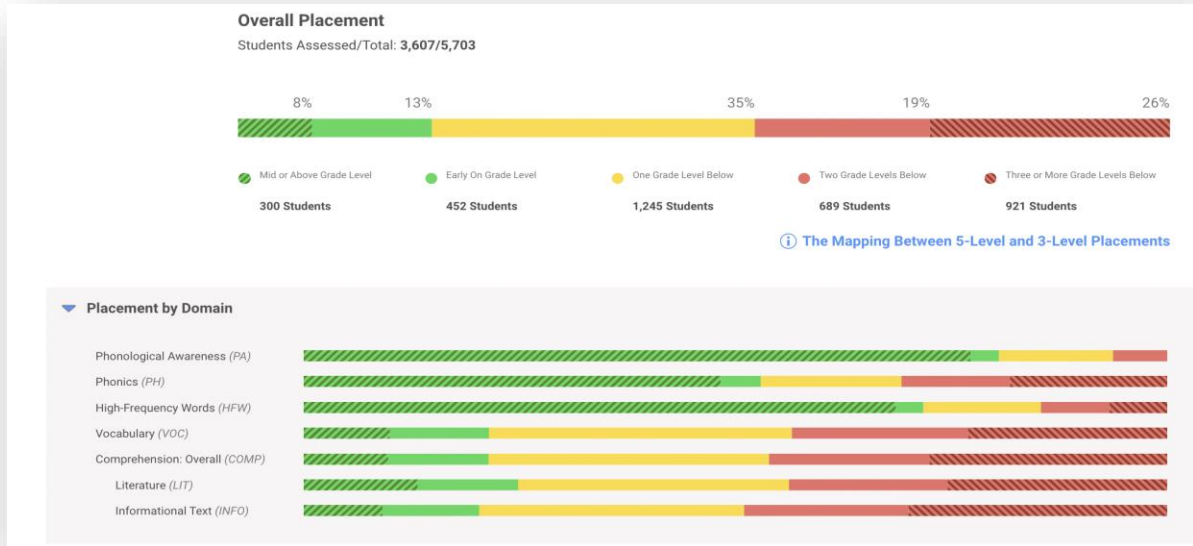


Reading, Part I

Reading BOY



Reading MOY





Reading, Part II

Reading BOY

Grade	Overall Grade-Level Placement						Students Assessed/Total
Grade K		3%	8%	89%	0%	0%	396/536
Grade 1		2%	4%	64%	30%	0%	415/531
Grade 2		2%	7%	33%	59%	0%	456/555
Grade 3		5%	11%	21%	28%	35%	525/540
Grade 4		3%	5%	36%	13%	42%	499/505
Grade 5		2%	8%	21%	31%	38%	580/591
Grade 6		5%	5%	16%	15%	59%	596/628
Grade 7		5%	9%	15%	13%	59%	644/665
Grade 8		10%	12%	16%	7%	56%	673/688

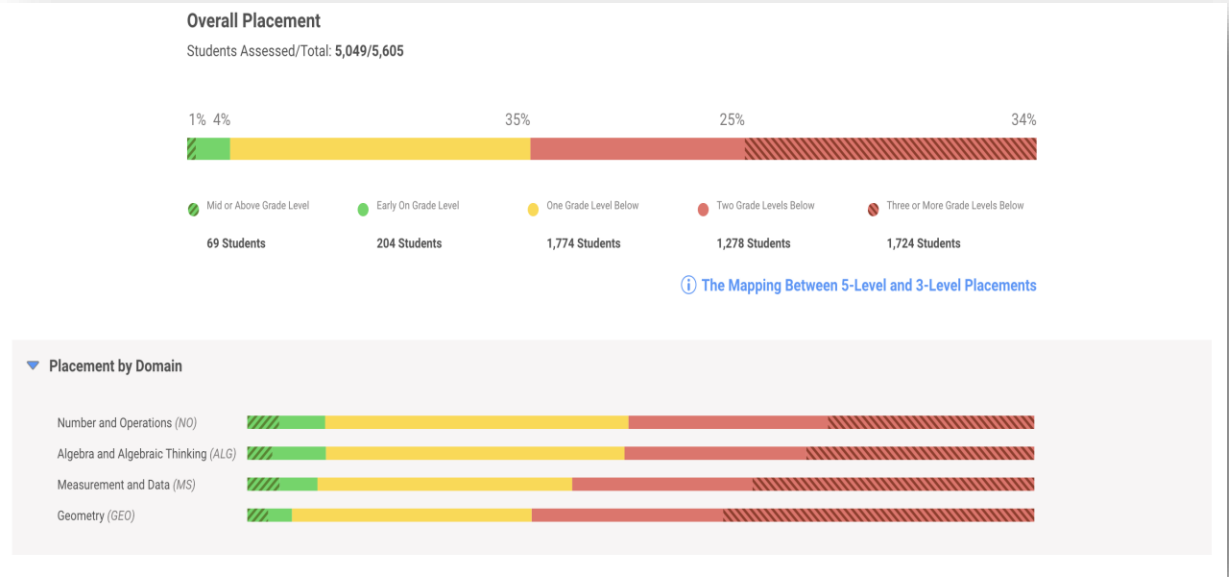
Reading MOY

Grade	Overall Grade-Level Placement						Students Assessed/Total
Grade K		13%	24%	63%	0%	0%	344/548
Grade 1		9%	7%	70%	14%	0%	395/536
Grade 2		9%	10%	34%	47%	0%	396/553
Grade 3		13%	21%	21%	22%	24%	506/549
Grade 4		9%	10%	38%	11%	33%	484/511
Grade 5		4%	12%	24%	33%	27%	570/610
Grade 6		6%	6%	20%	15%	53%	294/629
Grade 7		4%	10%	21%	12%	52%	286/667
Grade 8		8%	11%	20%	5%	56%	332/701

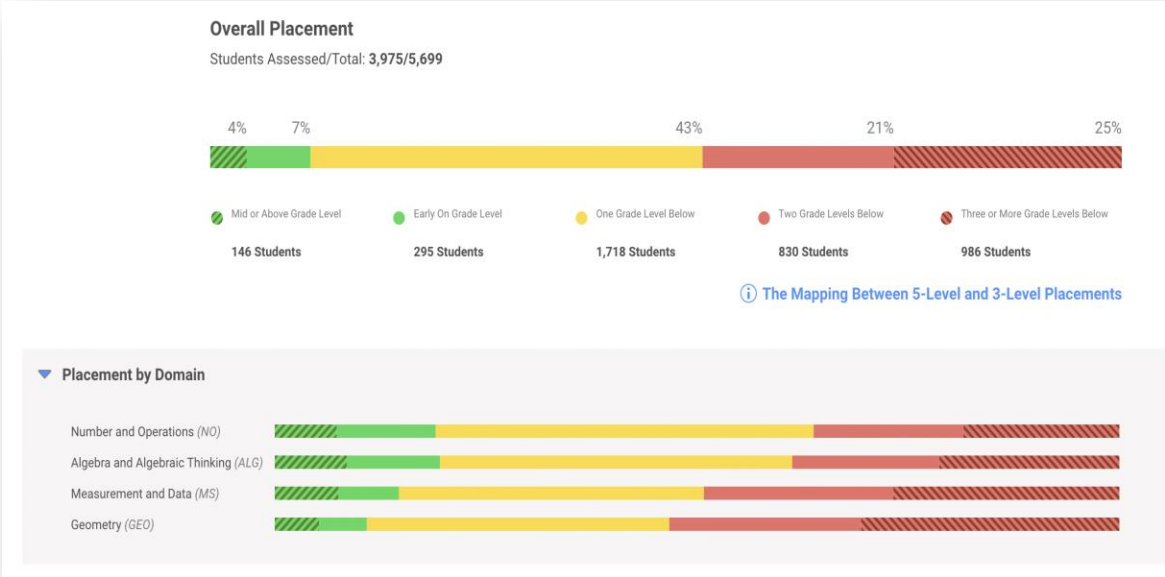


Math, Part I

Math BOY



Math MOY





Math, Part II

Math BOY

Grade		Overall Grade-Level Placement					Students Assessed/Total	
Grade K	<div><div></div><div></div><div></div></div>	3%	4%	93%	0%	0%	503/536	
Grade 1	<div><div></div><div></div><div></div></div>	1%	1%	57%	41%	0%	516/531	
Grade 2	<div><div></div><div></div><div></div></div>	0%	1%	34%	65%	0%	537/555	
Grade 3	<div><div></div><div></div><div></div><div></div></div>	0%	3%	25%	37%	35%	526/540	
Grade 4	<div><div></div><div></div><div></div><div></div></div>	1%	3%	27%	25%	43%	494/505	
Grade 5	<div><div></div><div></div><div></div><div></div></div>	1%	5%	24%	24%	46%	579/591	
Grade 6	<div><div></div><div></div><div></div><div></div></div>	1%	7%	22%	17%	54%	606/628	
Grade 7	<div><div></div><div></div><div></div><div></div></div>	1%	5%	22%	14%	58%	620/635	
Grade 8	<div><div></div><div></div><div></div><div></div></div>	4%	7%	23%	10%	56%	668/684	

Math MOY

Showing 13 of 13

Grade	Overall Grade-Level Placement				Students Assessed/Total		
Grade K		11%	9%	79%	0%	0%	423/548
Grade 1		4%	4%	74%	18%	0%	481/536
Grade 2		1%	4%	52%	44%	0%	490/553
Grade 3		3%	7%	41%	29%	20%	478/549
Grade 4		2%	10%	30%	25%	32%	456/511
Grade 5		3%	7%	33%	19%	37%	552/610
Grade 6		2%	8%	23%	16%	51%	346/629
Grade 7		3%	10%	23%	17%	46%	371/665
Grade 8		4%	8%	24%	13%	51%	378/698



Reading

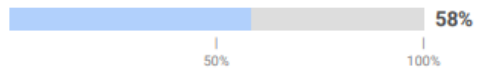
Diagnostic Growth



School Group D23
School All Schools
Subject Reading
Academic Year 2022 - 2023
Comparison Diagnostic MOY 1/3-2/17

Students Assessed/Total: 3,235/5,301

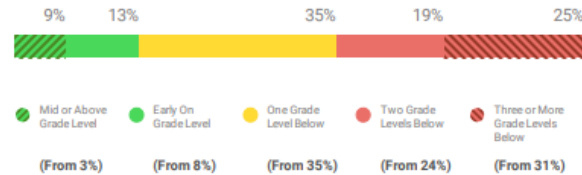
Progress to Annual Typical Growth (Median)



The median percent progress towards Typical Growth for this school is 58%. Typical Growth is the average annual growth for a student at their grade and baseline placement level.

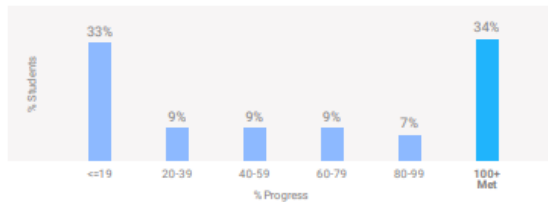
[Learn More About Growth](#)

Current Placement Distribution

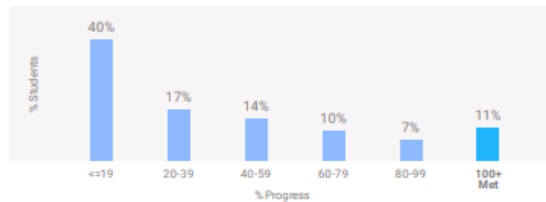


Mid or Above Grade Level (From 3%)
Early On Grade Level (From 8%)
One Grade Level Below (From 35%)
Two Grade Levels Below (From 24%)
Three or More Grade Levels Below (From 31%)

Distribution of Progress to Annual Typical Growth



Distribution of Progress to Annual Stretch Growth®



Math

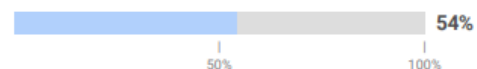
Diagnostic Growth



School Group D23
School All Schools
Subject Math
Academic Year 2022 - 2023
Comparison Diagnostic MOY 1/3-2/17

Students Assessed/Total: 3,358/5,296

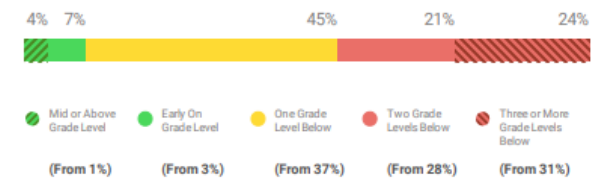
Progress to Annual Typical Growth (Median)



The median percent progress towards Typical Growth for this school is 54%. Typical Growth is the average annual growth for a student at their grade and baseline placement level.

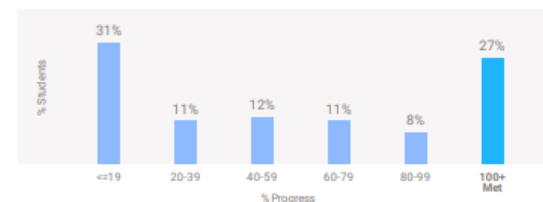
[Learn More About Growth](#)

Current Placement Distribution

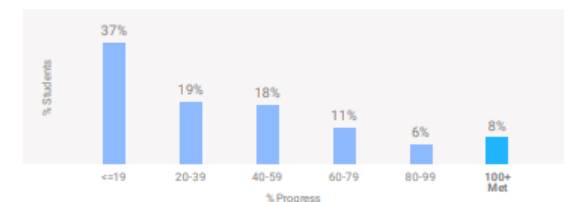


Mid or Above Grade Level (From 1%)
Early On Grade Level (From 3%)
One Grade Level Below (From 37%)
Two Grade Levels Below (From 28%)
Three or More Grade Levels Below (From 31%)

Distribution of Progress to Annual Typical Growth

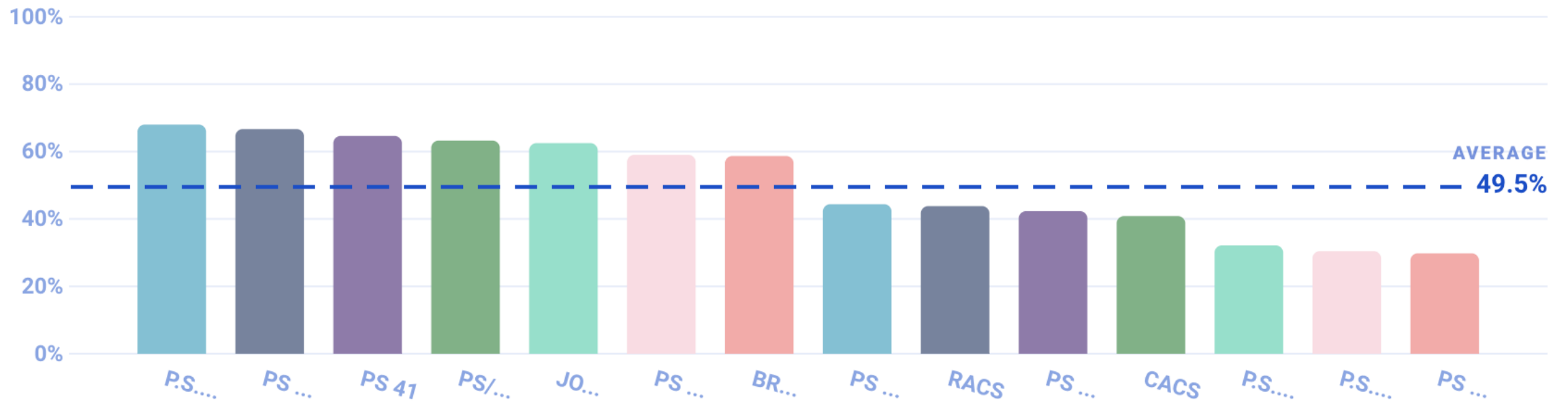


Distribution of Progress to Annual Stretch Growth®



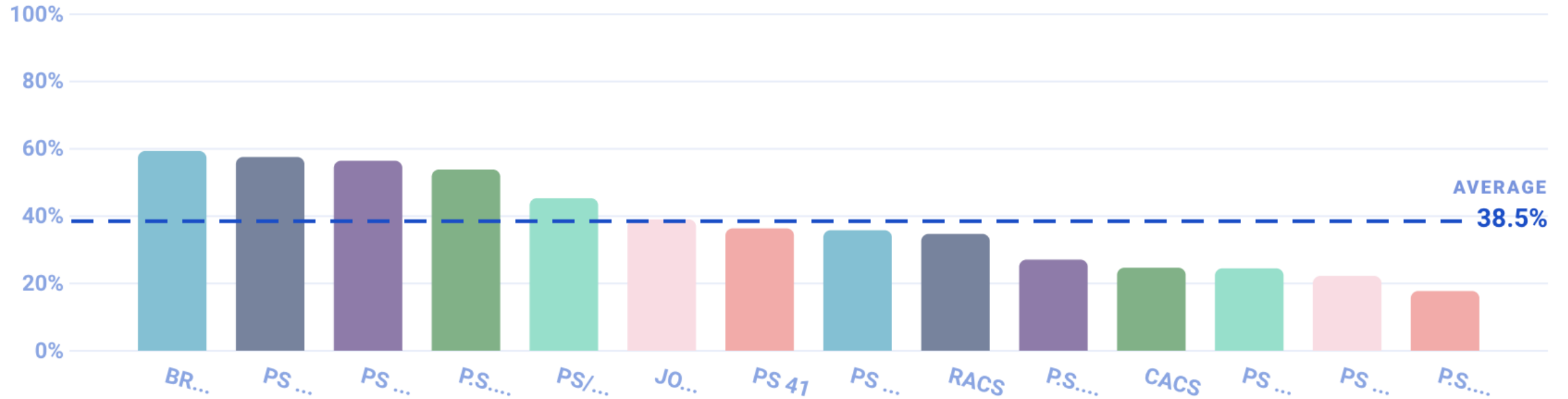
Fall Screener Acadience Reading

TYPICAL OR BETTER PROGRESS (%)



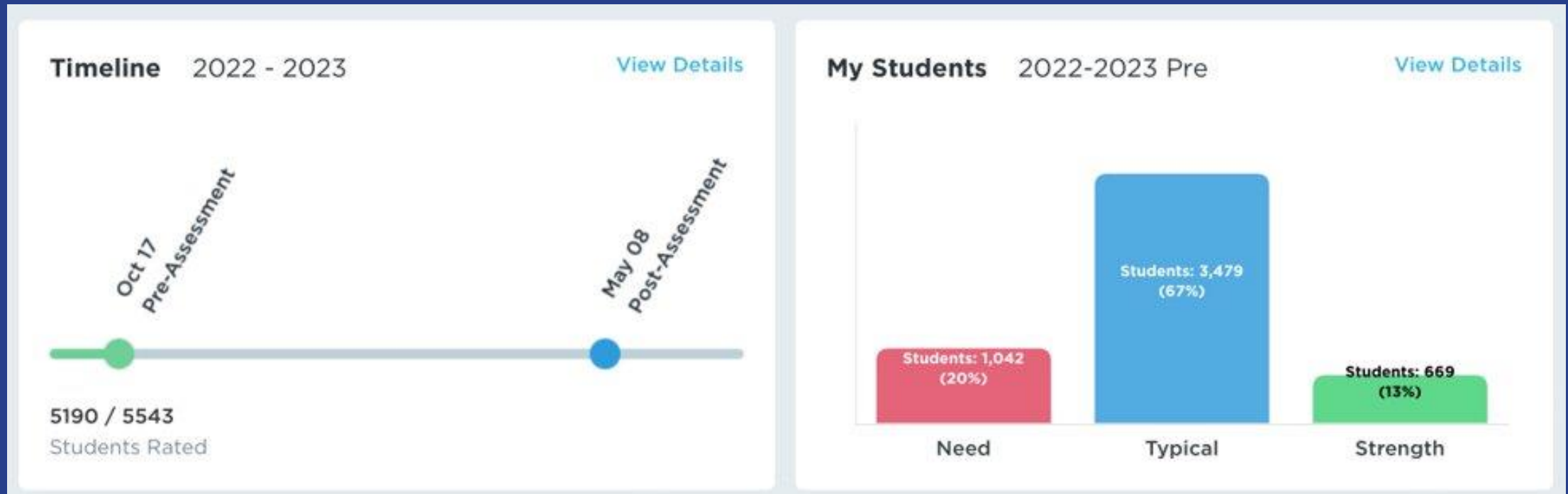
Winter Screener Acadience Reading

AT OR ABOVE OVERALL BENCHMARK (%)



DEVEREUX STUDENT STRENGTHS ASSESSMENT (DESSA) DATA

DESSA, Part I



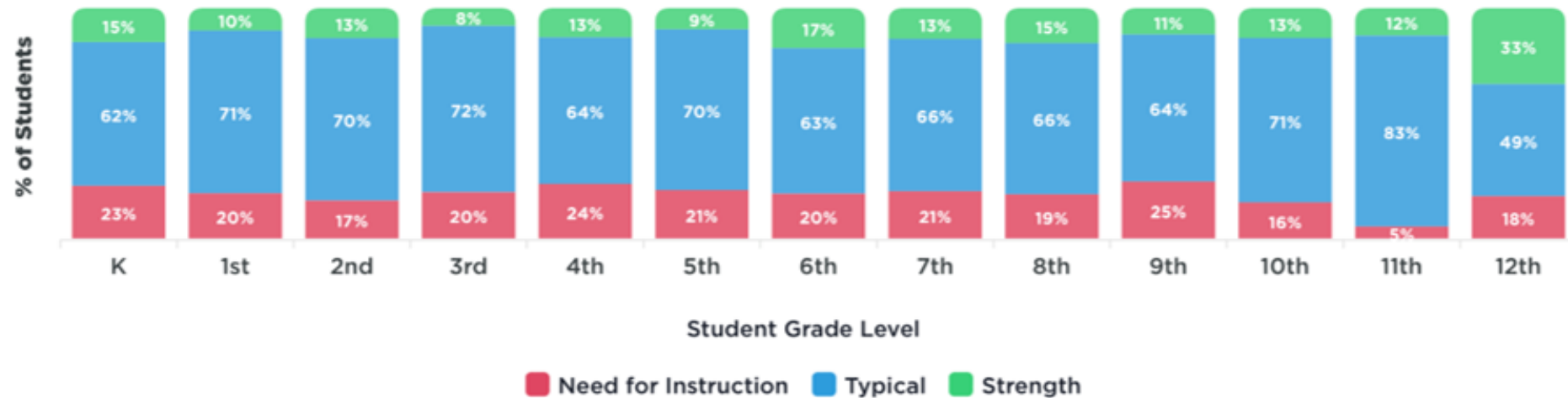
Dr. Mickisha McKoy, Deputy Superintendent

DEVEREUX STUDENT STRENGTHS ASSESSMENT (DESSA) DATA

DESSA, Part II: By Grade Level

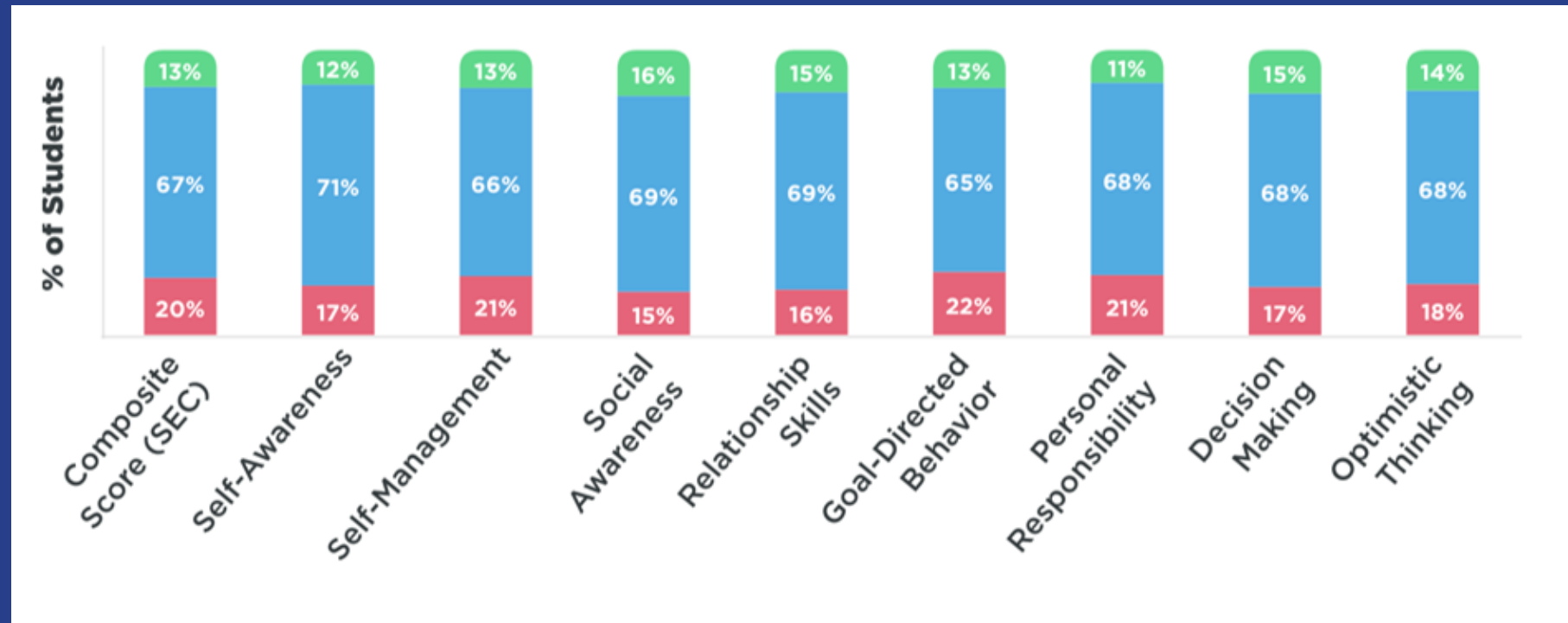
Grade Level Comparison 2022-2023 Pre

[View Details](#)



DEVEREUX STUDENT STRENGTHS ASSESSMENT (DESSA) DATA

DESSA, Part III: By SEL Components

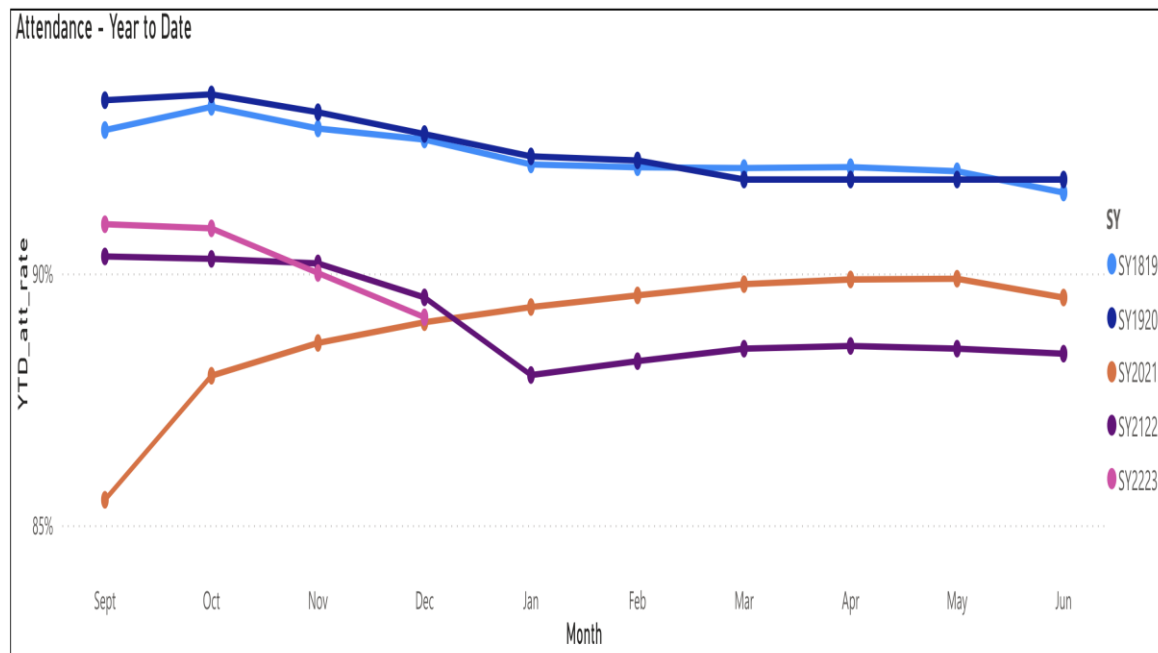


SCHOOL SUPPORT & OPERATIONS UPDATE

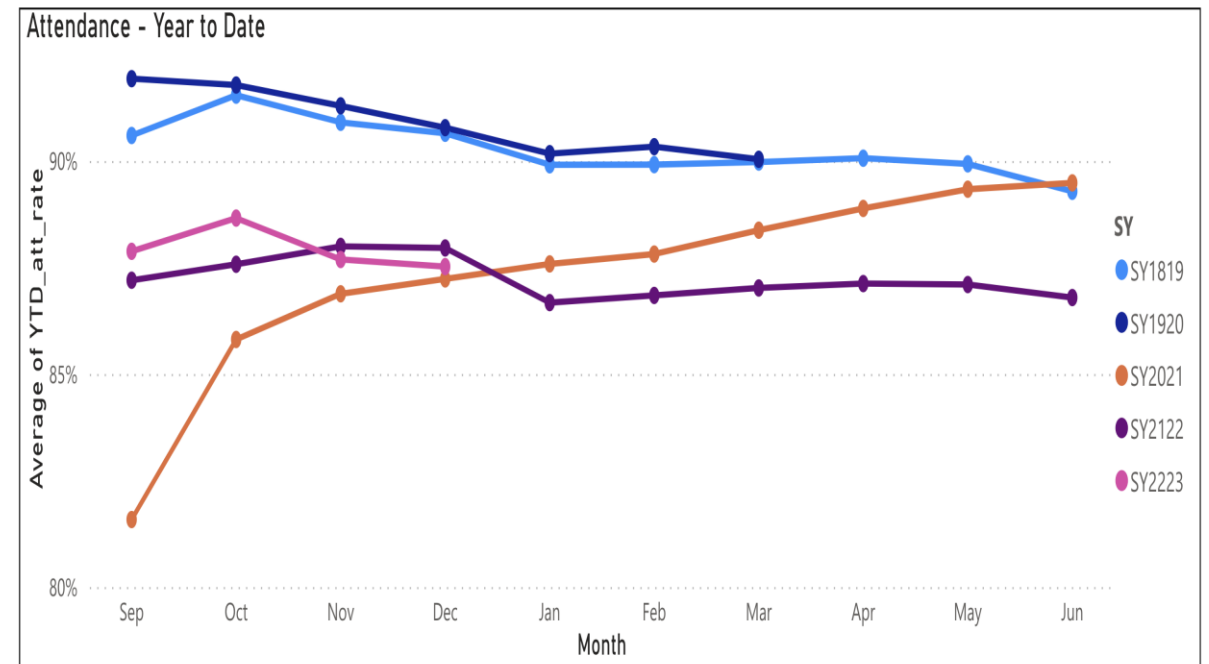
DAILY ATTENDANCE

Drew Goodman, Attendance & Compliance Coordinator

CITYWIDE ATTENDANCE DASHBOARD (K-12)



D.23- ATTENDANCE DASHBOARD (K-12)



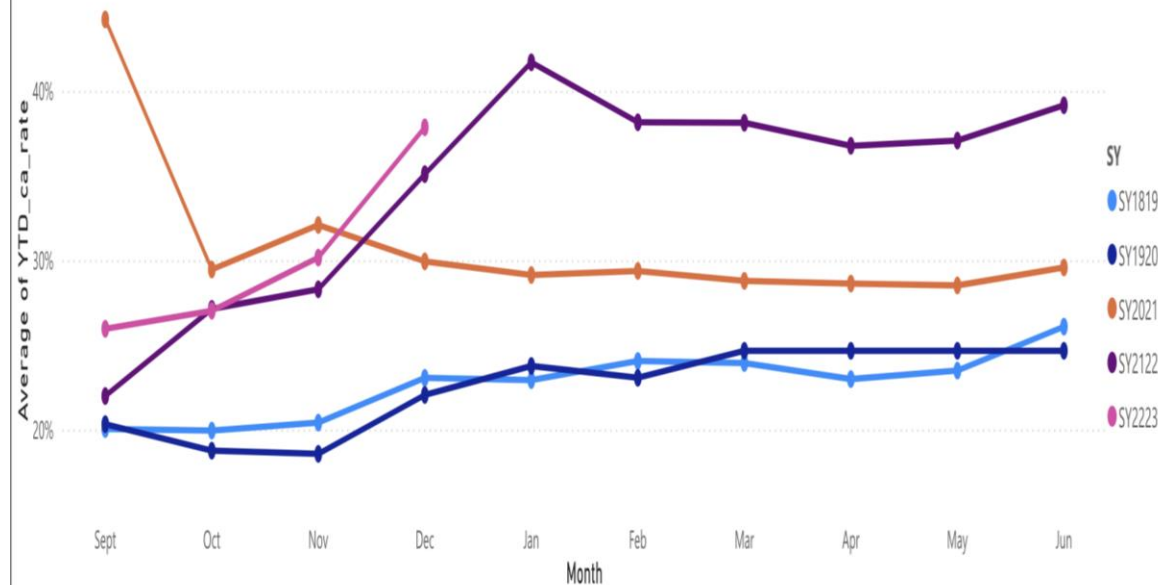
SCHOOL SUPPORT & OPERATIONS UPDATE

DAILY ATTENDANCE

Drew Goodman, Attendance & Compliance Coordinator

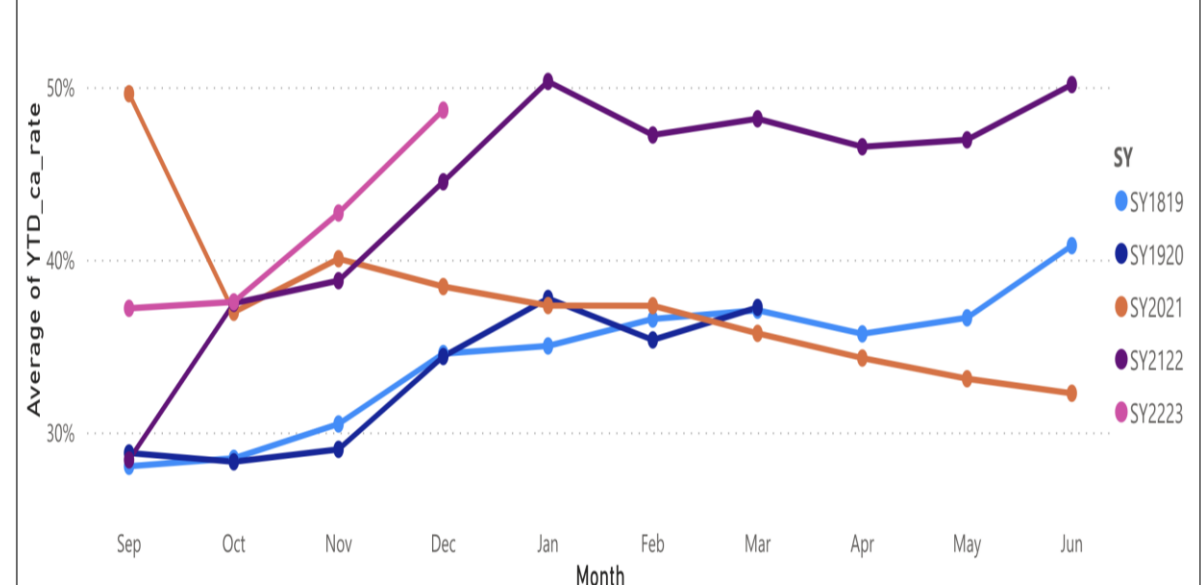
CITYWIDE ATTENDANCE DASHBOARD (K-12)

Chronic Absenteeism- Year to Date



D.23- ATTENDANCE DASHBOARD (K-12)

Chronic Absenteeism- Year to Date



D23 FACILITIES IMPROVEMENT INITIATIVE

What's Happened to Date

- Superintendent Kirkland and Chris Anzalone did preliminary reviews of schools to identify focus areas for improvements
- Division of School Facilities and Space Management conducted school walk-throughs with Principals and community members
- Maintenance issues were immediately addressed; projects were prioritized, with funding identified based on the type of project
- We have also partnered with SCA on the larger projects



OVERVIEW OF DISTRICT 23 FACILITIES PILOT AND NEXT STEPS



Overview of Projects

- Work includes everything from air conditioning replacements, classrooms upgrades to a newly renovated pool.

Context on the D23 Pilot

- Chancellor David Banks is focused on key investments within District 23 on instructional resources as well as critical infrastructure investments to ensure great schools for students, no matter their financial circumstances
- Further First Deputy Chancellor Dan Weisberg and Chief Operating Officer Emma Vadehra are invested in committing capital and other resources to improve facilities in line with the Chancellor's vision
- Building on a previous community-focused, facilities engagement strategy, the East Brooklyn Congregation came to FDC Weisberg to discuss the need for great schools in Brownsville with a focus on improving physical learning environments

Department of
Education

COMMUNITY UPDATES

District 23 / DOHMH Immunization Event



5 Day Event Total

251 doses of vaccines administered

22 individuals had blood drawn for TB testing

COMMUNITY UPDATES

Van Dyke Resident Association Meeting
Meeting



Van Dyke Resident Association



COMMUNITY UPDATES

Changing School Culture for Boys of Color



Dr. Jawanza Kunjufu with Dr. Kirkland

Meet & Greet with Police Officials



**Inspector Vasquez,
Commanding Officer,
73rd Precinct**

Chief Henderson,
Chief of Patrol
Brooklyn Borough North

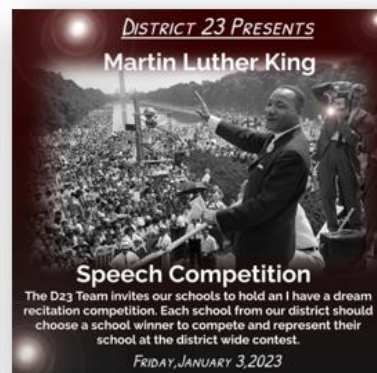
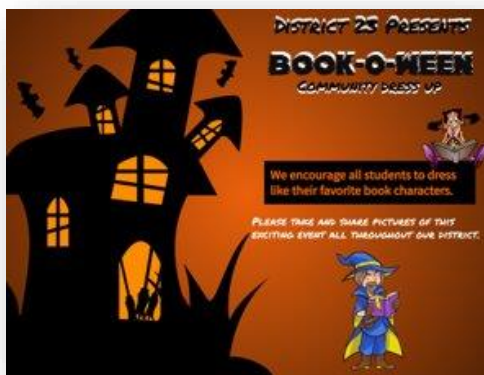
BCMS COMMUNITY FRIDGE RIBBON CUTTING



BCMS COMMUNITY FRIDGE RIBBON CUTTING



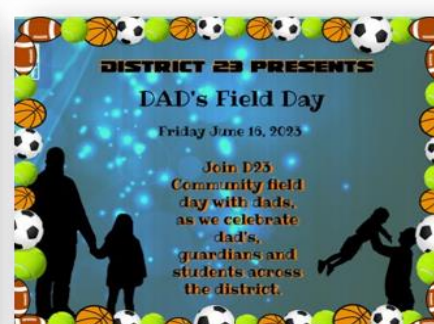
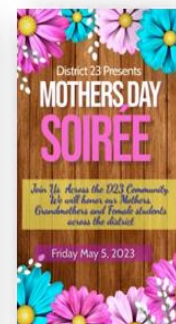
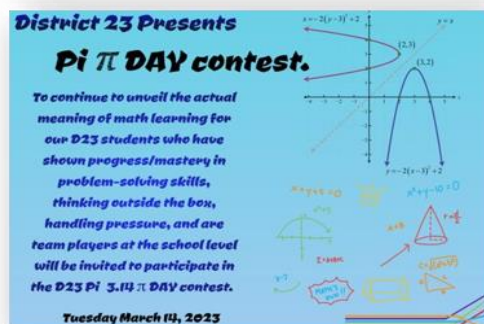
MONTHLY CELEBRATIONS AND INITIATIVES



**Village Volunteers
Fathers and Mentors**



**P.S. 184
Pizza with Dads**



**Mott Hall Bridges
Dads and Mentors**



Will Rochford, Family Support Coordinator



UPCOMING EVENTS AND REMINDERS

- ❑ **Community and Citywide Education Council Elections** - Application period - January 9th - February 13th
- ❑ **I.S. 392 Owls Basketball Team at the Barclays Center** - January 29
- ❑ **CEC** - February 6th
- ❑ **Nominations are OPEN for the Big Apple Teacher Awards through February 28th**
- ❑ **NYC Kids Rise Save for College Program** - Families of kindergarten students and newly enrolled first graders may activate their accounts.
- ❑ **3-K/Pre-K applications are now open!** - Application period - January 25 - March 10th
Families can apply in one of three ways:
 - Online with [MySchools.nyc](https://www.myschools.nyc.gov)
 - By phone at 718-935-2009. Call Monday-Friday between 8am and 6pm.
 - by contacting a Family Welcome Center. Learn how at schools.nyc.gov/FWC.
- ❑ **District MLK Speech Competition** - February 10th, P.S.156/I.S.392. 10:00 A.M.



 Scan Me

CONTACT DR. KIRKLAND

APP



WEBSITE



INSTAGRAM



TWITTER



FACEBOOK



YOUTUBE



LET'S STAY CONNECTED!