

Barnard Parent Informational Session

Wednesday, October 14,
2020

Barnard's Vision Statement

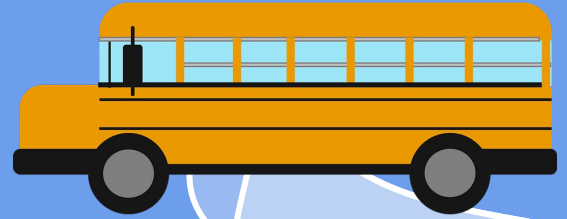


Henry Barnard School, an Early Childhood Center, nurtures the development of the whole child and cultivates a passion for lifelong learning.

Transportation

Bus Rules

- Masks are required before Boarding Buses
- Masks are to be worn for trip duration
- Seats will be assigned to support contact tracing
- Rear seats filled first, upon loading
- Unloading from the front, when arriving at school
- Siblings sit together
- One student per seat, unless siblings
- Buses with 65 capacity, 24 student capacity
- School buses will not be equipped with hand sanitizer due to its combustible composition.



Drop-off Zones

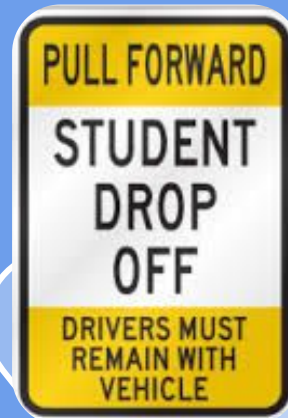
Parents that will stay in the car can drop off along Barnard Road.

If you would like to park your car and bring your child to the front door, please park in the neighborhood.

PreK- Auditorium

K-2 - Main Entrance

Doors open at 8:25AM



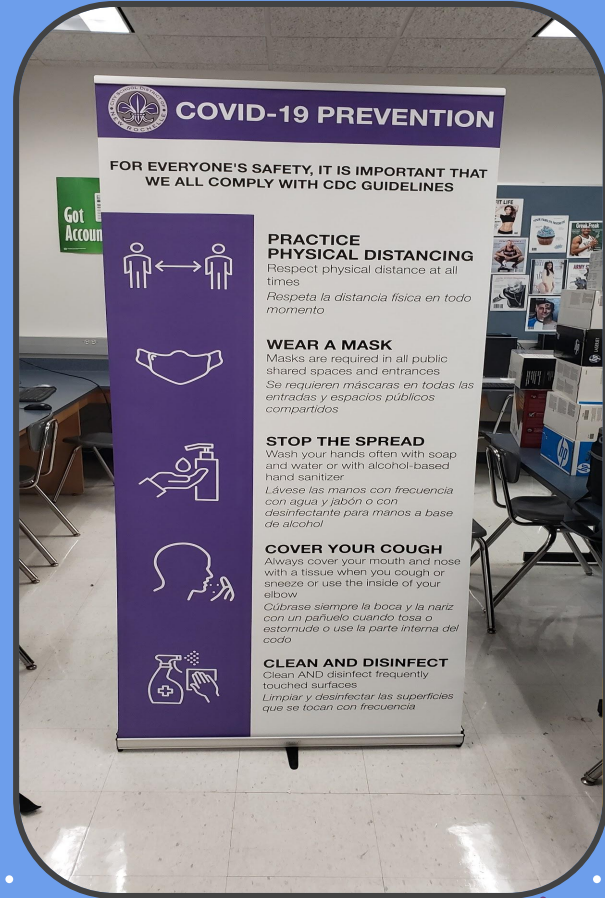
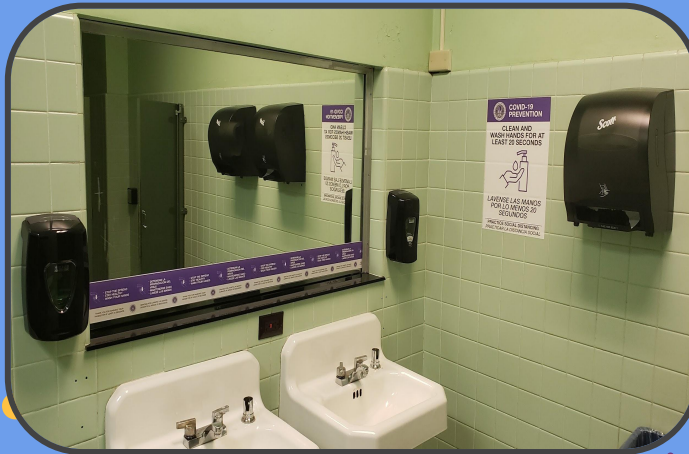
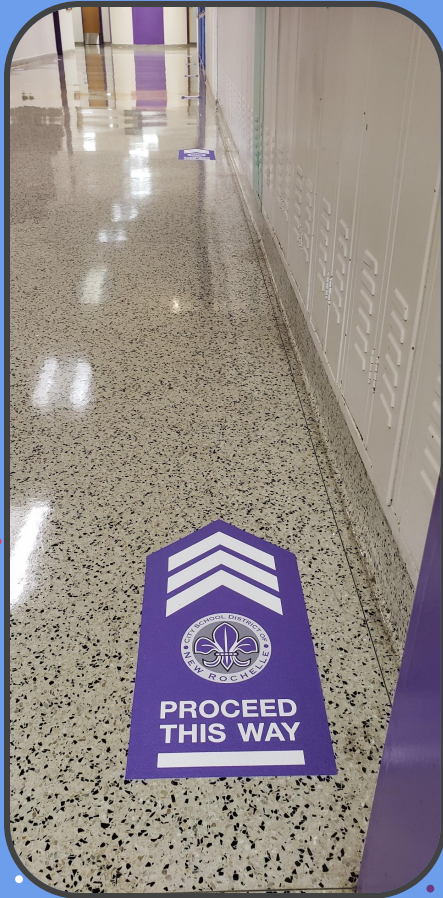
PPE and Face Coverings



- Masks are required on school grounds and in building.
- Students, staff and visitors will supply their own masks.
- All teachers and staff will have a supply of masks.
- Custodial Staff will distribute masks, according to a schedule so that all staff have masks on hand.
- Masks may be removed during meals and for short breaks.
- Social Distancing must be maintained during meals and mask breaks.

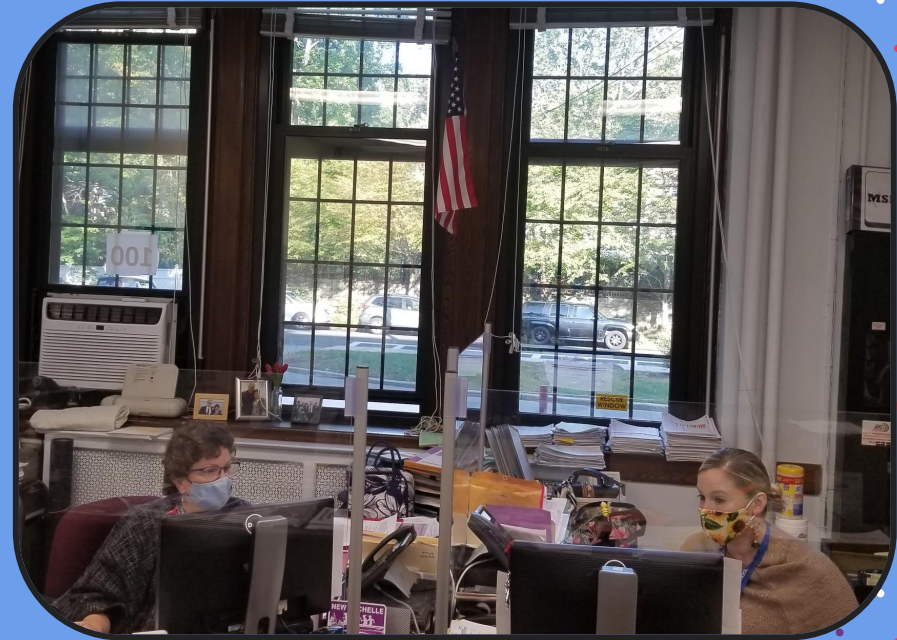
School Environment

- Floor Markers
- Signage
- Hand Sanitizer
- PPE
- Desk Shields



Offices

- Desk Shields
- Masks when interacting with Students, teachers, and staff.



Visitors



- No outside visitors/volunteers will be allowed on school grounds, except if related to the safety and well-being of students.
- Essential visitors will be required to wear face coverings, follow social distancing protocols, and will have restricted access to the school building.
- Parent-teacher conferences will be held by phone or virtually.
- Please have your identification, and a mask, when coming to Barnard School to sign-out your child.
- Masks should be worn when picking up your child at dismissal.

Safe Classroom Practices

- Individual Materials
- Desks 6 feet Apart
- Carpets Removed
- Shared Materials Limited
- Shared Materials In Isolation for 96 hours
- 96 Hour “Material Isolation Bins” in each classroom.
- Monday, Tuesday, Thursday Bin, Return to Circulation on Monday
- Friday Bin - Return to Circulation on Tuesday
- Clinicians will utilize desk shields



Mask Breaks

Students will take scheduled mask breaks, as directed by their teachers.

Students will take mask breaks, as needed, by request.

When taking mask breaks, students, teachers, and staff will:

- remain seated 6 feet apart
- take their masks off for a period of five minutes or less
- take their masks off to eat a snack or lunch



Hygiene, Cleaning, and Disinfection

- Cleaning protocols followed by custodial staff
- Daily cleaning and disinfecting of all utilized spaces with an EPA List N approved product.
- High frequency touchpoints will be cleaned throughout the day.
- Alcohol and BZK based hand sanitizer in all classrooms and offices.
- Hand washing or sanitizer when:
 - entering classroom
 - before/after eating
 - after using the restroom
 - after coughing/sneezing/using a tissue
 - before/after physical education
 - after touching shared objects and surfaces



Hybrid and Virtual

Cohort A - In person on Mondays and Tuesdays

Cohort B - In person on Thursdays and Fridays

Virtual - At Home Monday through Friday

Wednesdays

- Virtual Morning Meeting with Students
- Asynchronous Assignments
- Planning, Assessments and Grade Level Collaboration
- Virtual Afternoon Meeting with Students



Lunch

- In the classrooms
 - Lunches pre-ordered and pre-packaged each morning
 - Playgrounds Utilized for Recess
-
- Breakfast - 2 Cold Options
 - Lunch - 1 Hot Option and 2 Cold Options
 - Meals Pre-wrapped



Periods	Monday- COHORT A	Tuesday-COHORT A	Wednesday VIRTUAL	Thursday COHORT B	Friday COHORT B
1. 8:40 -9:15	Library <small>Counseling meeting</small> FLES <small>Counseling meeting</small> ART Prep PE Prep	Library CAMP EL GTM PE FLES ART	Library Prep PE Prep FLES Prep Art Prep	Library <small>Counseling meeting</small> PE <small>Counseling meeting</small> FLES <small>Counseling meeting</small> ART <small>Counseling meeting</small>	Library <small>Counseling meeting</small> PE <small>Counseling meeting</small> FLES <small>Counseling meeting</small> ART <small>Counseling meeting</small>
2. 9:20-9:55	PE - DiFabio FLES Prep ART - 10	PE - Borzello FLES - DiFabio ART -8	PE - Borzello ART - DiFabio	PE - DiFabio FLES - Borzello ART - 6	Library - DiFabio PE - Prep FLES - Prep ART - 9
3. 10:00-10:35	Library - Borzello PE - Rich ART - 7	Library Rich PE - Ingram FLES prep ART - 3	PE -Locke FLES - Sickler ART - Badillo	PE - Rich FLES Prep ART - 4	PE - Pinn FLES - Rich ART - Borzello
4. 10:40-11:15	Library - Bailey PE -Eliasoph FLES - Egan ART - Ingram	Library - Eliasoph PE - Bailey FLES - Ingram ART - Egan	PE - Egan FLES - Bailey ART - Rich PreK GTM	Library - Ingram PE - Egan FLES - Eliasoph ART - Bailey	Library - Egan PE - Ingram FLES - Bailey ART - Eliasoph
5. 11:20-11:55	PE - Badillo FLES - Pinn ART - Locke	Library - Badillo PE - Pinn FLES - Locke ART - Sickler	PE - Eliasoph FLES - Ingram	Library - Locke PE - Badillo FLES - Pinn ART Prep	Library - Sickler FLES -Badillo ART prep
6. 12:00-1:00	CAMP Lunch				
7. 1:00-1:35	Library prep PE - Sickler FLES Locke ART - 7 Music - Pinn	Library Prep PE Prep FLES RTI Team coverage ART - Prep Music - Sickler	PE - Staropoli ART 4 FLES -Egan Music - Rich 2nd GTM	Library Prep PE Prep FLES - Sickler ART - 6 Music - Jimenez	Library - Prep PE - Locke FLES - Staropoli ART - 9 Music - Badillo
8. 1:40-2:15	Library - Moran PE - Jimenez FLES - Staropoli ART - Romero Music - Egan	Library- Jimenez PE - Romero FLES - Moran ART - RTI Team coverage Music - Staropoli	PE - Moran FLES -Jimenez Music - Romero K GTM	Library - Romero PE - Staropoli FLES - Moran ART - Jimenez Music - Eliasoph	Library - Borzello PE - Romero FLES - Jimenez ART - Moran Music - Bailey
9. 2:20-3:00	Library - Staropoli FLES - Rich ART - 10 Music - DiFabio	PE - Moran FLES - Romero ART - RTI Team coverage Music - Borzello	PE - Bailey FLES - Eliasoph ART - Pinn Music - Ingram 1st GTM	Library - Pinn PE - Sickler FLES - Badillo ART - 3 Music - Locke	PE - Jimenez FLES - Romero ART - Staropoli Music - Moran

Instruction

	<u>Kindergarten</u>	<u>1st</u>	<u>2nd</u>
Main Platform	Google classroom with Seesaw	Google Classroom with Kami. Service providers may use Seesaw	Google Classroom with Kami. Service providers may use Seesaw
Reading and Writing	Teachers will have individual subscriptions to Teacher’s College Online resources that include videos and resources from TC for virtual learning. Teachers may add additional videos and resources to customize learning. Students will be provided whole group and small group instruction throughout a week and will use online platforms to submit student work.		
Phonics	TC + IXL	Foundations + IXL	
Math	SAVVAS Realize (Investigations)		
Social Studies and Science	Teachers and students will have access to programs such as STEMscopes, PebbleGo, and BrainPOP. These programs are aligned to NYS Next Generation Science Standards and Social Studies Standards		
SEL	rethink Ed		

AMPEL

Art, Library and Italian will be in the student's classroom.

PE in the gym with 12 feet of social distancing or outside.

Music in the auditorium with 12 feet of social distancing.

Live for students on Hybrid Days, Virtual for students at home. Mr. Cohen will provide recorded sessions for students at home to watch during hybrid days.



Mandatory Drills



- Drills will be conducted in a manner that maintains social distancing
- According to NYS Education Law, schools are required to conduct 8 drills (4 fire and 4 lockdown) by January 1st 2021, and 4 more fire drills after January 1st.
- All required drills will be conducted for both Groups A and B.
- Lockdown Drills cannot be done while maintaining social distancing requirements.
- During lockdown drills, students and staff will stay in their locked classes and teachers will explain the expectations under normal circumstances.

Daily Temperature Checks for Students

- Parents and guardians are required to make daily temperature checks, prior to arriving at Barnard School.
- Parents/Guardians are required to complete a weekly health screening questionnaire.
- Any student who is experiencing any COVID-19 related symptoms, including fever ($>100.0^{\circ}\text{F}$) is required to stay at home and is advised to seek immediate medical attention.
- Upon arriving at Barnard School, students are required to use the temperature screening Kiosk or have their temperature scanned by a staff member, before entering the building.

Any student with a temperature above -- will be brought directly to the isolation room.



Temperature Checks for Teachers and Staff

- Staff will be required to complete a daily health questionnaire by 8:00 am.
- Health questionnaires responses will be reviewed by daily.
- The staff member will immediately inform their supervisor of any positive responses on the health questionnaire.
- The supervisor will inform the school nurse.
- Staff will take their own temperature on a daily basis before reporting to work.
- Any employee who is experiencing any COVID-19 related symptoms including fever ($>100.0^{\circ}\text{F}$) is required to stay at home and is advised to seek immediate medical attention.
- All school or district visitors, vendors, guests and contractors will be required to complete a district provided health screening questionnaire and to take their temperature.

Daily Temperature Checks for Visitors, Vendors and Contractors

- All visitors, vendors and contractors will be required to scan their temperatures as entering the school building.
- All school or district visitors, vendors, guests and contractors will be required to complete a district provided health screening questionnaire.



Field Trips and Large Gatherings

In order to stay committed to the health and safety of our students and staff, field trips and large group gatherings such as concerts and assemblies, will not be permitted until further notice.



Isolation Room

Location:

Identified Bathroom:

Set-up:

Library

In the Library

Partitions Separating 2

Phone and Computer

Sink

Staff Member with PPE



Isolation Room

- Parents/Guardians will be immediately notified if their child is experiencing any COVID-19 symptoms.
- Request for Pick-up will be within 30 minutes of notification.
- Pick-up Location: Front Entrance
- The district will follow CDC guidelines on “Cleaning and Disinfecting Your Facility,” if someone is suspected or confirmed to have COVID-19.

Early Pick-up Procedures

1. Early Pick-up Before 2:30 PM
2. Notify Child's Teacher and Office Staff through Email
3. You will receive an email confirming receipt of your request.
4. Wear a mask to the entrance of the school.
5. Sign your child out with security.



Dismissal Procedures

Staggered Dismissal Times:

- PreK and K at 2:50
- 1st and 2 at 3:00

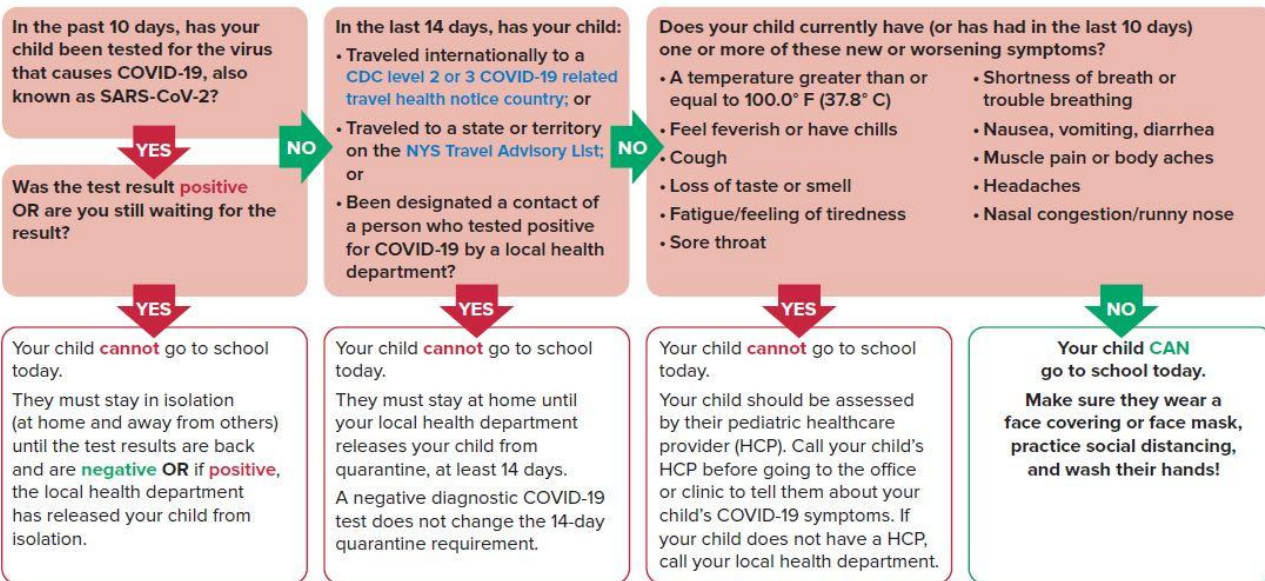


A Positive COVID Test

- Immediately notify the building principal and nurse
- The principal and nurse will contact the Medical Director and Asst. Superintendent for Human Resources
- While maintaining confidentiality required by state and federal law and regulations, the contract tracing and notification to the Westchester County Department of Health will begin.
- Students will be cleared by the school nurse in consultation with the Medical Director.
- Staff will be cleared through the nurse assigned to the Staff Tracking Team, in consultation with the District Medical Director and the Human Resources Office.

NYSDOH COVID-19 In-Person Decision Making Flowchart for Student Attendance

Can My Child Go To School Today?



Report absences, symptoms, and positive COVID-19 test results to your child's school.

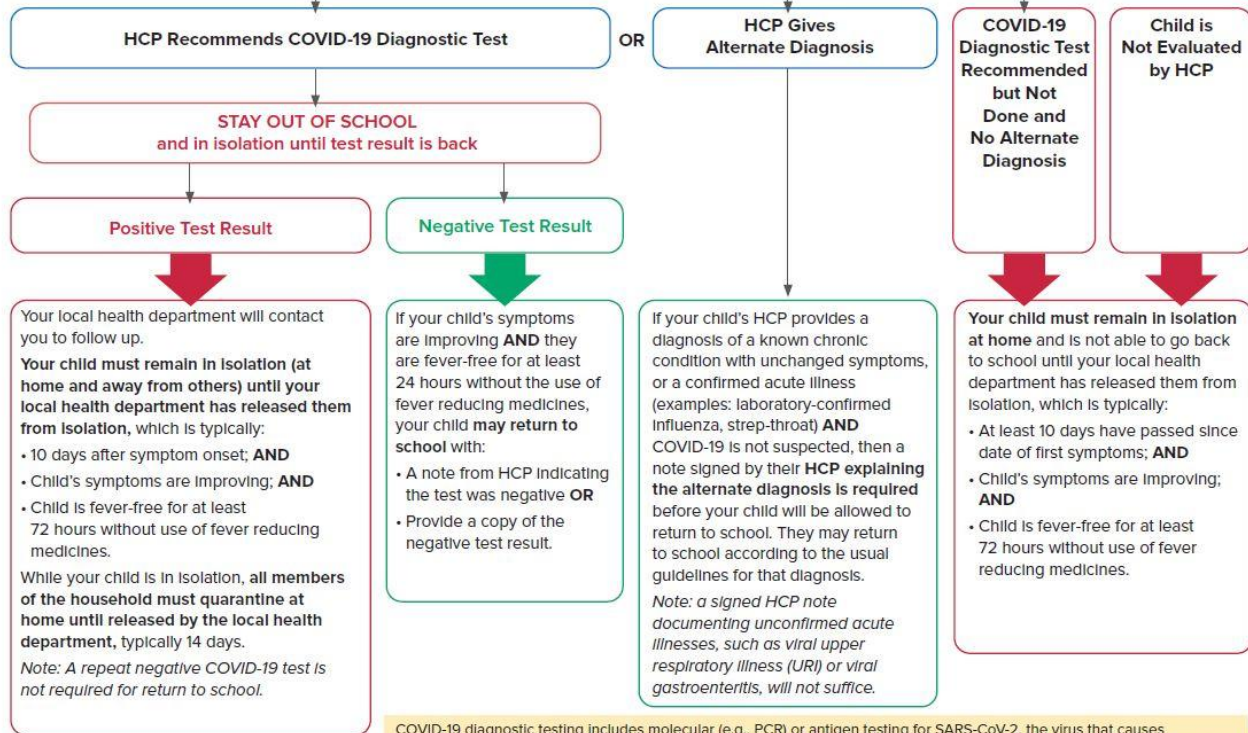
SEEK IMMEDIATE MEDICAL CARE IF YOUR CHILD HAS:

- Trouble breathing or is breathing very quickly
- Prolonged fever
- Is too sick to drink fluids
- Severe abdominal pain, diarrhea or vomiting
- Change in skin color - becoming pale, patchy and/or blue
- Racing heart or chest pain
- Decreased urine output
- Lethargy, irritability, or confusion



My child has COVID-19 symptoms. When can they go back to school?

HEALTHCARE PROVIDER (HCP) EVALUATION FOR COVID-19 (can be in-person or by video/telephone as determined by HCP)



COVID-19 diagnostic testing includes molecular (e.g., PCR) or antigen testing for SARS-CoV-2, the virus that causes COVID-19. Diagnostic testing may be performed with a nasopharyngeal swab, nasal swab, or saliva sample, as ordered by the health care provider and per laboratory specifications. At times, a negative antigen test will need to be followed up with a confirmatory molecular test. Serology (antibody testing) cannot be used to rule in or out acute COVID-19.

PreK Parent Bus Card - Morning Students

Name: CANDICE LEE

School: BARNARD NEW YORK STATE

Bus Co: FIRST MILE SQUARE

To School:

Bus Route: WHITE

AM Time: 7:54 am

Bus Stop: Drake Ave & Lee Ct

Child Care/Religious:

From School:

Bus Route: BLUE

PM Time: 11:50 am

Bus Stop: 247 Drake Ave

Child Care/ Religious:

PreK Parent Bus Card - Afternoon Students

Name: CANDICE LEE

School: BARNARD NEW YORK STATE

Bus Co: FIRST MILE SQUARE

To School:

Bus Route: WHITE

AM Time: 12:04 pm

Bus Stop: Drake Ave & Lee Ct

Child Care/Religious:

From School:

Bus Route: BLUE

PM Time: 4:03 pm

Bus Stop: 247 Drake Ave

Child Care/ Religious:

K-2 Parent Bus Card

Name: CANDICE LEE

School: BARNARD NEW YORK STATE

Bus Co: FIRST MILE SQUARE

To School:

Bus Route: WHITE

AM Time: 7:54 am

Bus Stop: 1 Northwood Circle

Child Care/Religious:

From School:

Bus Route: BLUE

PM Time: 4:03 pm

Bus Stop: 1 Northwood Circle

Child Care/ Religious:

Nurturing Separation



Separation

- Separation is an experience for both parent & child
 - Child: Closeness (Safety) vs. Independence
 - Parent: Comforting vs. Fostering that Independence



Strategies to help with the process



Before School

1. When possible, make contact with teacher
2. Do something special the night before
3. Have a special, consistent, & predictable morning routine
4. When appropriate, consider a special “friend”, object, or picture
5. Discuss the day on the way to school/bus
6. Bring attention to Parent-Teacher relationship
7. Always take time to say goodbye appropriately



Ties to School

Every teacher has their own personal strategies that have proven helpful for children and parents. Don't be afraid to reach out to them or us!



Contact Info

Cristina Travieso (School Social Worker) - Ctravieso@nredlearn.org

Jennifer Mott (School Social Worker) - Jmott@nredlearn.org

Diego Monteagudo (School Psychologist) - Dmonteagudo@nredlearn.org

Aida Salcedo-Kelly (School Psychologist) - ASalcedoKelly@nredlearn.org