

FMHS Class of 2022 Orientation

August 24, 2020



Meeting Protocols

- Please remain on mute
- Use the chat to ask questions

Agenda

- Introduction to FMHS
Reopening Plan
- Health and Safety
- FMHS Blended Learning
Model
- Welcome to Upper House
(11th grade)!

FMHS Reopening Plan



FMHS Framework for Reopening

- Health and Safety is a priority.
 - NYCDOHMH, NYSDOH, CDC drive the City approach.
 - Mt Sinai SBHC will support FMHS and campus team.
 - Multi-pronged approach - screening, hand hygiene, social distancing, face coverings
- Social - Emotional / Trauma-Informed school redesign is necessary.
 - Traumatic stress is caused by events that make it difficult for us to cope. COVID 19, lack of access to support systems, death / illness, isolation from school and peers are all triggers of traumatic stress.
- High Quality Instruction is at the core of our work: PBL, Mastery, Advisory, Collaboration / Community.

FMHS Reopening Plan



FMHS Core values:

- 21st Century Literacy for all - Communication fosters community and our school is committed to ensuring our students have opportunities to develop complex communication skills that will enable them to engage in many different communities.
- Leadership training is key - Every FMHS student is a leader and has the potential to use their influence at school and in other communities, so it is our responsibility to promote reflective, responsive leadership, and sustainable leadership strategies.
- Lifelong learning is a process - In an ever-changing world, it is necessary to develop learning habits that can be applied outside of school to foster collaboration, innovation, and perseverance.
- Our diversity is our value - So many cultures and beliefs are represented in our community and we strive to create an anti-racist school culture that highlights and values difference and collaboration.

Health and Safety

This is a shared responsibility. We will ask all families to review a community pledge to promote safety that can protect everyone in the community.



Health and Safety Protocols



Screening

- Daily pre-screening at home - symptoms (cough, chills, loss of taste, etc.) AND temperature check.
- Random temperature checks at entry.

Hand Hygiene

- Sanitizing stations at entry, sanitizer access in classrooms, and time for handwashing during the day.
- Training and instruction.

Social distancing

- During transit, at entry, in hallways, in classroom.
- Limited / no visitor access.

Face covering

- Required for entry and at ALL times in the school building.

Health and Safety Protocols

Health Response

Symptoms at school trigger BRT.

- Isolation, evaluation, outreach and exclusion.
- Reporting to DOE and Test / Trace.
- Medical clearance.

Report of positive case student/staff.

- Reporting to DOE and Test / Trace.
- Medical clearance.
- Class OR school closing.

Safety Response

General Response protocols in place.

- Drills adjusted (staggered evacuations, in-seat lockdown, training for all cohorts.)
- Physical and immediate safety priority for real event.

Blended Learning

This model supports all students to have access to instruction, feedback and resources both in school and out of school. It allows for student collaboration and leadership development.



FMHS Blended Learning

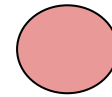


Tuesday

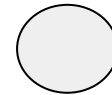
Cohort A will be in school.

Cohort B and C(Fully remote students) will be at home

	Cohort A	Cohort B/C
8:45-9:15	Entry	Prep for day
9:15-10:35	A block class	A block class
11-12:20	B block class	B block class
12:40-1:20	Lunch	PE
2:00-2:30	Advisory	Advisory
2:30-3:05	Wellness Workshop / Office Hours	Wellness Workshop / Office Hours



Synchronous class time
for on and offsite
students



Synchronous REMOTE
class time

Google Classroom, Google Meet,
Zoom - for ALL.

Breaks and passing staggered on
site.

Monday - alternating, limited office
hours, morning Advisory.

Meals pre-entry and at dismissal.

Welcome to 11th Grade!



Classes

Humanities, Math, Science, College Level Class, PE, Advisory, Wellness Workshop

Q1 - 2 of the following: Humanities, Math, OR Science

AND PE, Wellness Workshop, Advisory

Wellness Week / Student Led

Conferences

Q2 - 2 of the following: Humanities, Math, OR Science

AND PE, Wellness Workshop, Advisory

What to Expect

Mastery / Outcomes

- Be Precise, Collaborate, Communication, Grow, Innovate, Interpret, Justify, Research
- Rubrics (1, 2, 3, 4)

PBL

- Group problem solving
- Investigation
- Individual pace

Community

- FMHS email
- Peer mentoring
- Wellness Workshop - with 10, 11, 12
- Clubs

Welcome to 11th Grade!



Goals

College Readiness:

- 80 GPA or higher
- 95% or higher attendance
- Intersession style courses
- Advisory College prep - Naviance, College Knowledge, College Night, individual session
- College level courses - AP Research, BMCC Psychology, Science Research, Poetry in America, College Now

Community:

- Respect for All
- Leadership
- Circles

Innovation:

- Meet new people
- Join a new community
- Showcase a talent
- Try something new

Meet the Team!



Ms. Holder, PE



Mr. Joralemon, ISM
Grade 9 Team Lead



Ms. Yannascoli,
Humanities



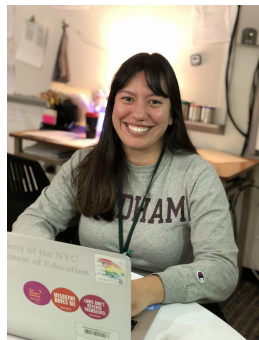
Mr. Bridgemohan,
Humanities



Ms. Romero, Writing



Mr. Javier, 9/10
School Counselor



Ms. Castillo, UH
Math / 9 Advisor



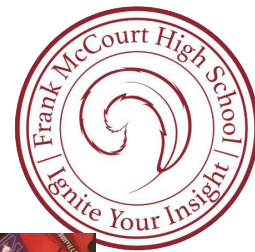
Ms. Weltman,
Media / 9 Advisor



Ms. Mathes, ISM / 9
Advisor

Not Pictured:
Mr. Andrade, Spanish / 9 Advisor
Mr. Saidenburg, UH Math / 9 Advisor
Ms. Miklos, Student Support
Ms. Gates, Student Support
Ms. Evar, Student Support
Ms. Reyes, Student Support

Meet the Team!



Ms. Haddad, ISM 10



Ms. Rashidova, UH
Humanities



Ms. Monegro,
Humanities 10



Ms. Da Costa, UH
Humanities



Ms. Morris, College
Counselor

Not Pictured:

Mr. Barrera - UH Humanities

Ms. Chevere - School Secretary

Mr. Dennis - UH Science

Ms. Diallo - ISM 10

Mr. Manis - Humanities 10

Ms. Novas - Student Support

Ms. O'Brien - UH Science

Ms. Rade - UH Science

Mr. Tavarez - Student Support

Mr. Thompson - UH Humanities

Meet the Team!



Caren Austen
Parent
Coordinator



Ms. Hickey,
Assistant
Principal



Ms. Salzberg
Principal

Not Pictured:
Mercedes Chevere - School
Secretary

Next Steps



- Review the FMHS Family Guidebook coming soon
- Complete the DOE [Learning Preference Questionnaire](#)
- Check the [FMHS Website](#) and [FMHS Blended Learning site](#) regularly and bookmark it
- Make sure FMHS has up-to-date EMAIL contact information for your family
- Make sure your NYC DOE schools account
- Caren Austen, Parent Coordinator: ms.austen@fmhsnyc.org / 716.249.4714

Q & A

