

TAKE A DEEP DIVE INTO THE CURRICULUM

Discover skill progression

How does IXL adapt to each student? Within each skill, there are multiple steps that increase in difficulty. This may include more complex text or numbers, more answer choices, or fewer hints and prompts.

As students progress through the steps, we increase the difficulty of one or more of those factors, but at a gradual, gentle pace. This ensures that students understand the foundations of the skill before working up to more rigorous questions.

Look at the nouns in bold. Select the **one common** noun.

Her **brother** lives near the **Mississippi River**.

Look at the nouns in bold. Select the **two proper** nouns.

Donald and his **parents** traveled to **France**.

Select the **two proper** nouns.

Linda spends Thanksgiving in the city.

Select all of the **common** nouns.

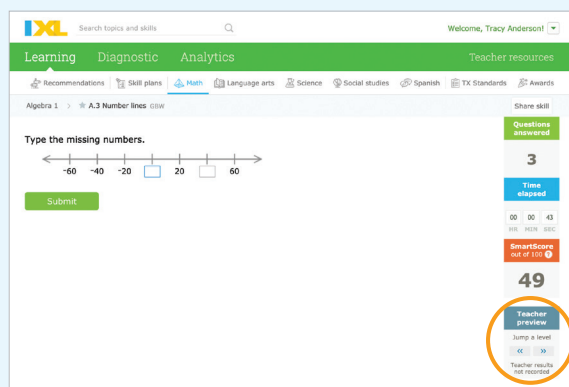
Toby and his cousin were born in June.

Select all of the **common** nouns.

Children at Clarksville Preschool decorated their rooms for the holidays.

★ Pro-tip:

Use the 'Teacher preview' feature to check the difficulty levels within a skill before assigning it.

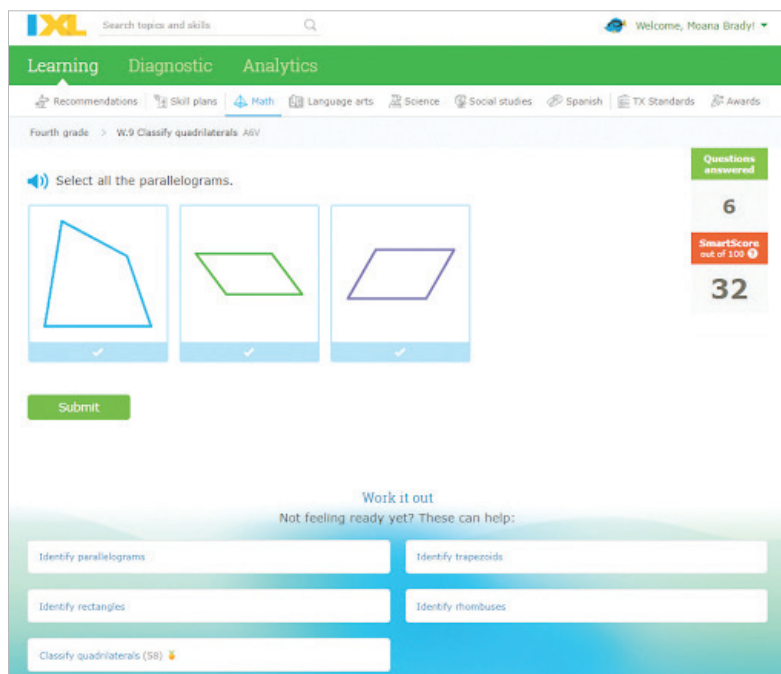


The screenshot shows the IXL Teacher resources interface. The main area displays a math problem: "Type the missing numbers." with a number line from -60 to 60. The sidebar on the right shows various metrics: "Questions answered" (3), "Time elapsed" (00:00:43), "SmartScore" (49 out of 100), and a "Teacher preview" button which is circled in orange. Below the "Teacher preview" button, it says "Jump a level" and "Teacher results not received".



In-skill recommendations

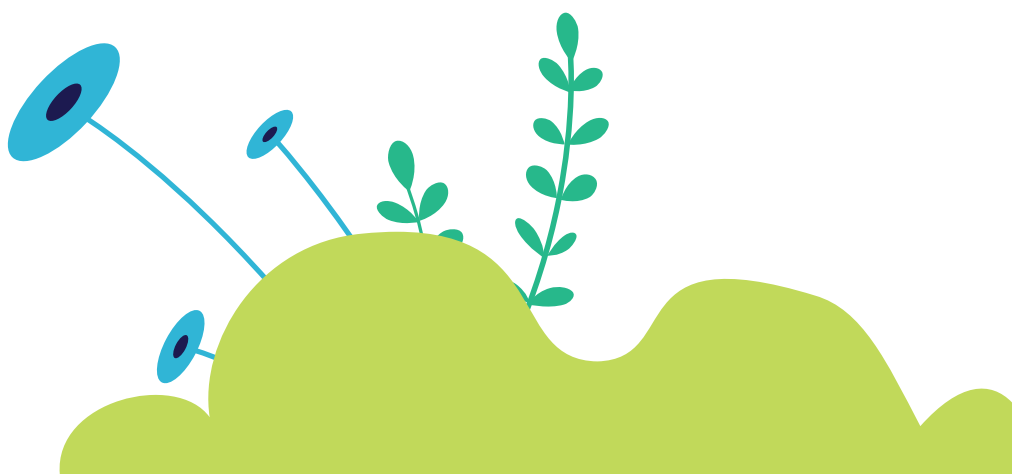
In-skill recommendations identify knowledge gaps for the skill a student is currently working on, and help them to progress through that skill. Students can click on an option under “Work it out” to practice supporting skills. Then, when they’re ready, they can go back and tackle the original skill with confidence. When students reach a SmartScore of 90, they’ll see “Next Up” recommendations for skills that they’re ready to work on next!



USE IXL ANALYTICS TO DRIVE INSTRUCTION

Dashboard

Use the Dashboard to gain a high-level overview of student activity in IXL, such as questions answered, skills mastered, and time spent learning. Quickly view recommended skills and clear them with a single click.





★ **Pro-tip:**

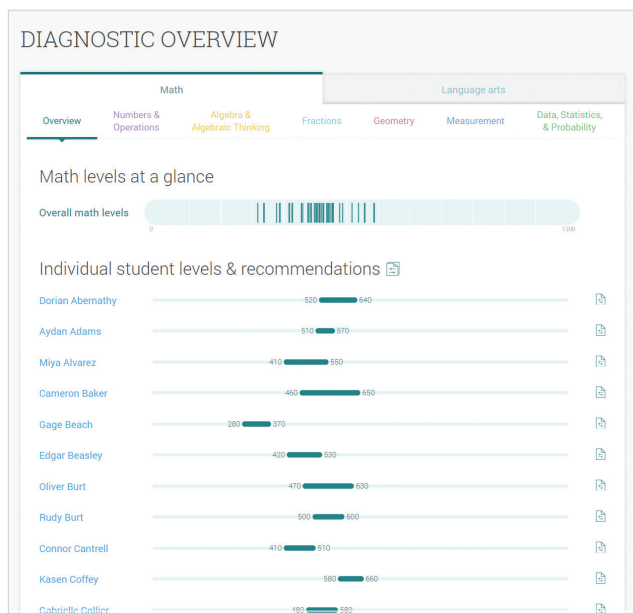
Customize IXL Analytics reports by using the drop-down menus in the grey bar at the top of each report to filter the information. View by class, subject, date range, skill plan, and more.

The Real-Time Diagnostic and Strand Analysis

The bar at the top of the strand analysis helps you visualize the knowledge levels of your class. Hover over the lines to see which students are in which ranges. Click on a strand to drill into it and see student groupings and the top recommended skills for each group.

Ways to use the IXL Real-Time Diagnostic

- Give students their Diagnostic Action Plan PDFs and have them practice some of their top recommended skills.
- Use the Student Action Plans to track student progress throughout the year and keep parents in the loop!
- Use the Diagnostic Strand Analysis to determine your small-group instruction.



Students Quickview

Use this report for a high-level view of how and where students are spending their time on IXL. Click on a student's name to drill down into their individual practice sessions.

Score Grid

A quick and easy way to see if students have completed their SmartScore goals. Use the handy “Additional options” menu to filter the grid. For example, choose to just see scores for the skills students have practiced, for skills in a specific category or standard, for suggested skills, or to highlight scores at or above 70, 80, or 90.

This is also a great report to export as a spreadsheet. Look for the icon next to the report name!

Trouble Spots

The Trouble Spots report is an essential tool for addressing student needs efficiently. It pinpoints where students are getting stuck, indicating the specific difficulty level within a skill they haven’t been able to move past.

- A trouble spot means a student has missed 3+ questions in that particular item type, or level of difficulty, in a skill.
- Use the drop-down to view individual student trouble spots.
- Scroll through the actual questions students missed.
- Hover over a student name for additional details about their progress.

Ways to use the Trouble Spots report

- Lesson planning “triage”: Determine what gaps to address with the whole class, with small groups, and with individual students.
- Use the missed questions as sample questions when reteaching students.

TROUBLE SPOTS

STUDENT: All students

Showing active trouble spots for practice since February 1. See all active trouble spots from this school year.

Ways to help 20 students at once...

5-EE.12 Volume of Irregular figures made of unit cubes

MISSED QUESTIONS FROM THIS ITEM TYPE

What is the volume of this object?

cubic units

STUDENTS STUCK ON THIS ITEM TYPE

Ayden Adams	Miya Alvarez	Gage Beach	Oliver Burt
Connor Cantrell	Kasen Coffey	Gabrielle Collier	Avery Fleming
Elmer Frye	Jaylyn Head	Fiona Larson	Tatum McCarthy
Celia Meyers	Paris Robbins	Adam Rowe	Gregory Shaffer
Rocky Weiss	Karen Whitney	Isabel William	August Witt

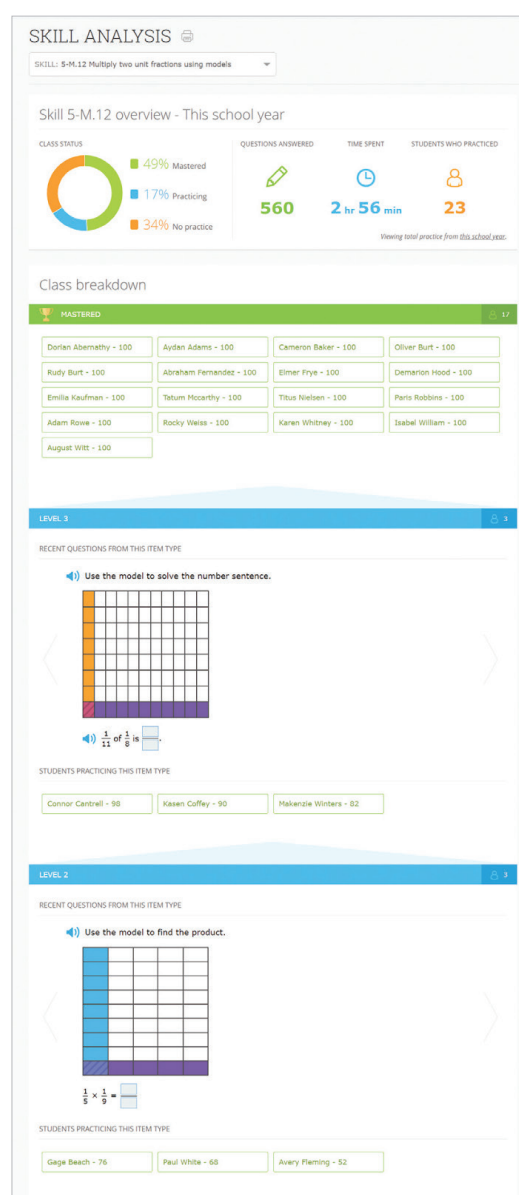
Skill Analysis

The Skill Analysis report is great for a deep dive into skills the whole class is working on. Get insight into the levels of difficulty in the skill and where students are on the path toward mastery.

- See what step each student is on in the skill.
- Scroll through the actual questions students answered.
- Hover over a student name to see if they are progressing or if they have hit a trouble spot.

Ways to use the Skill Analysis

- Small-group instruction: Form groups for reteaching based on the level students are currently working on.
- Peer instruction: Pair up students working on the same level, or have a student at a higher step help a student who's at a lower step!
- Whole-group instruction: Get insight into the question types you'll want to cover with the entire class.

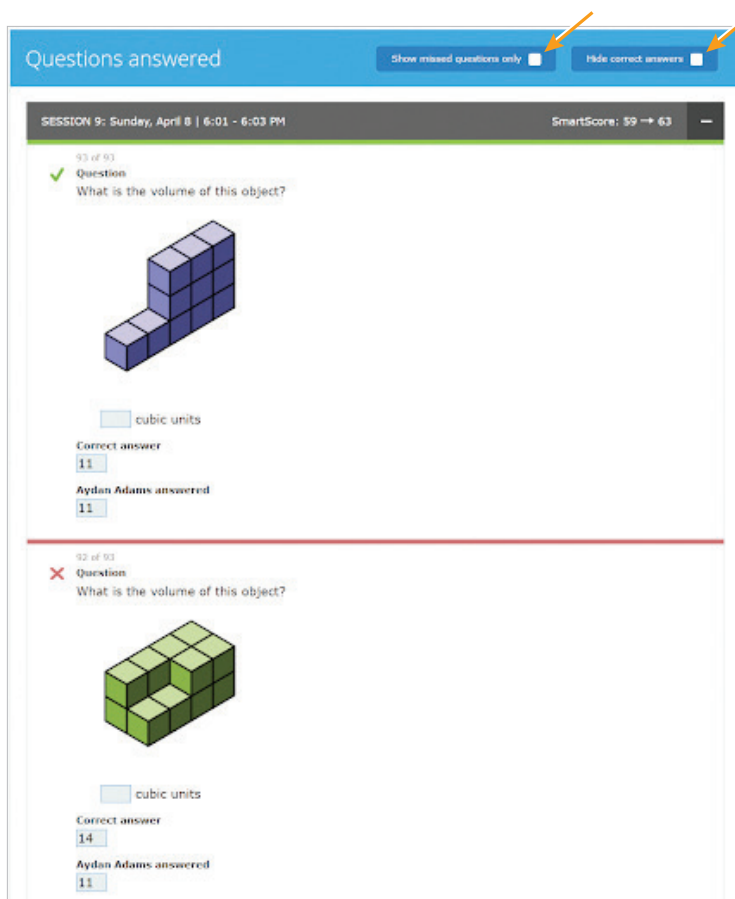


Questions Log

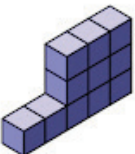
If a student is getting stuck, the Questions Log report can help you uncover why they're struggling.


Ways to use the Questions Log

- Break down every practice session and see the student's answer to every question they encountered.
- Examine their responses to help discover patterns and mistakes the student is making.
- Filter the report to view missed questions only and hide correct answers.
- After filtering, print missed questions as a worksheet to help students understand their mistakes and redo their work!



The screenshot displays the 'Questions answered' report for a session on Sunday, April 8, from 6:01 to 6:03 PM. The SmartScore is 59 to 63. The interface includes two filter buttons at the top right: 'Show missed questions only' and 'Hide correct answers', both of which are currently unchecked. Two questions are listed:

Question 93 of 93
✓ Question
What is the volume of this object?

cubic units
Correct answer: 12
Aydan Adams answered: 11

Question 92 of 93
✗ Question
What is the volume of this object?

cubic units
Correct answer: 18
Aydan Adams answered: 11

Progress and Improvement

Filter by each student and receive a detailed breakdown of skills practiced, time spent, the specific questions they answered, their score, and their improvement.

Ways to use Progress and Improvement

- Share with parents in parent teacher conferences.
- See what students have worked on and how they are progressing to improve IEP meetings.
- Dive into areas for growth by skill when conferencing with students.

Progress and Growth

Discover an overall skill progress and growth summary that also drills down into individual students. Find targeted growth analytics for both skill practice and the Real-Time Diagnostic. Metrics range from total questions answered in skills to student progress in the diagnostic.

