

Jan 1, 2020 to Present

CURRICULUM



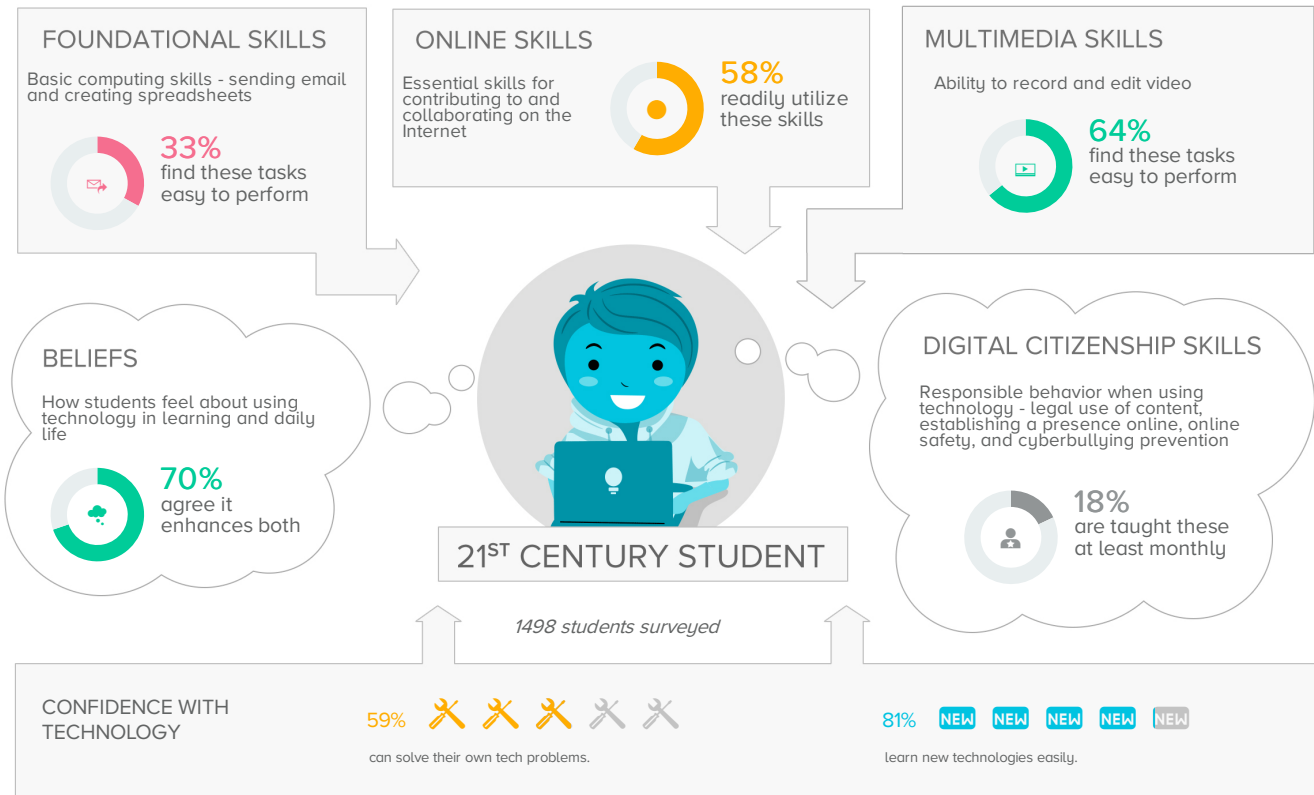
Although today's students are digital natives with many skills in social networking, the majority of them are not social learners with the ability to apply complex technology skills to everyday challenges.

Classrooms that prepare students for college and career seamlessly integrate technology into daily instruction in a way that intentionally scaffolds students' technology skills. Although today's students are digital natives with many skills in social networking, the majority of them are not social learners with the ability to apply complex technology skills to everyday challenges.

Furthermore, students' everyday experiences are seamlessly interwoven with digital devices and instant communication. In order to meet students "where they are," technology instruction must be infused in every subject area. Teachers are aware of this trend. According to a national *Pew* survey, 95% of students regularly use the Internet.

Given this, a modern curriculum must purposefully include incremental technology-infused skill acquisition. However, the design of every effective curriculum begins by considering the unique needs of the learners. Although students are comfortable tweeting and surfing the web, they still need support to use technology for productivity tasks such as creating spreadsheets and sending professional email.

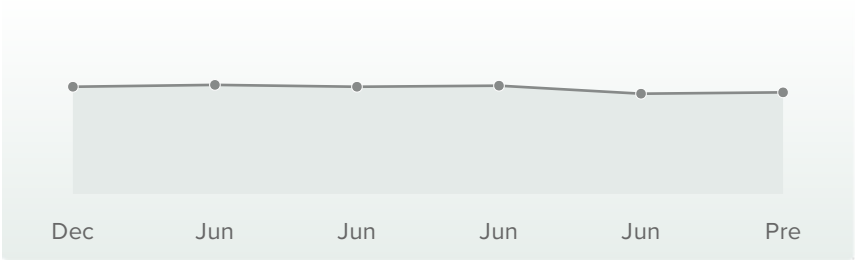
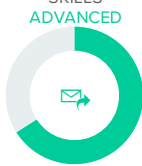
Being aware of students' skill profiles with technology can greatly inform the development of a cohesive, integrated curriculum that allows students to build the technology skills sets necessary for college and career.



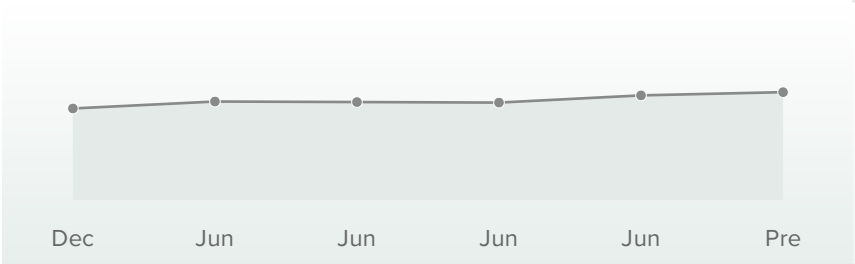
Contributing Factors

The factors that most contribute to the success of your organization include ...

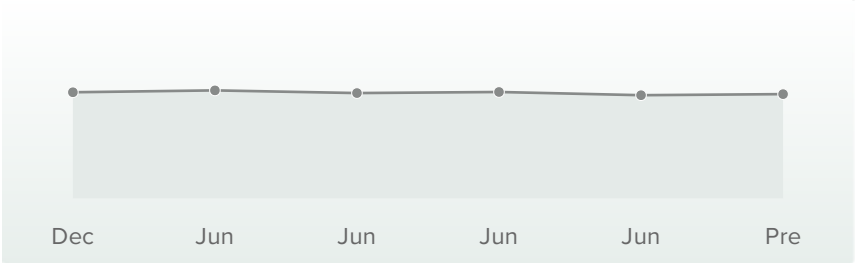
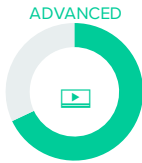
STUDENT FOUNDATIONAL SKILLS



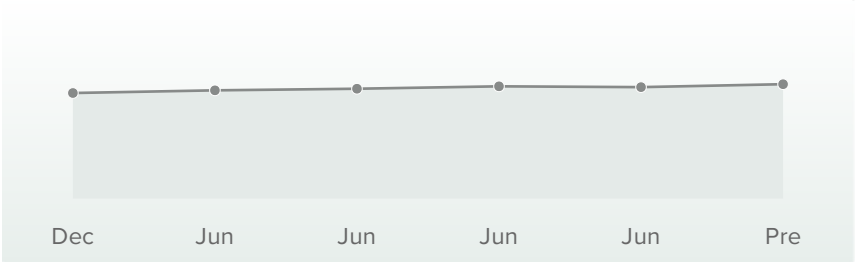
STUDENT ONLINE SKILLS



STUDENT MULTIMEDIA SKILLS



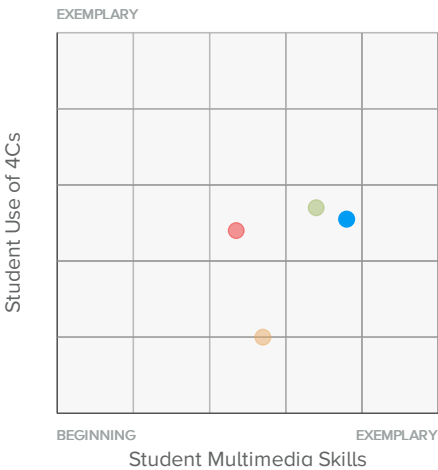
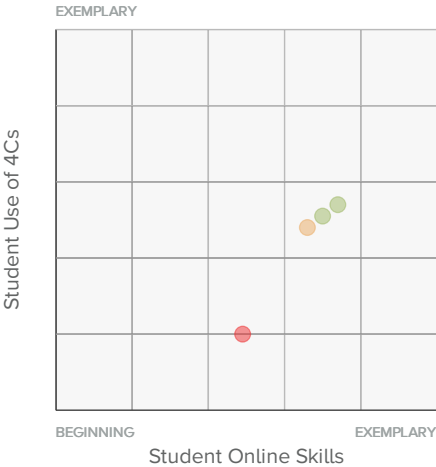
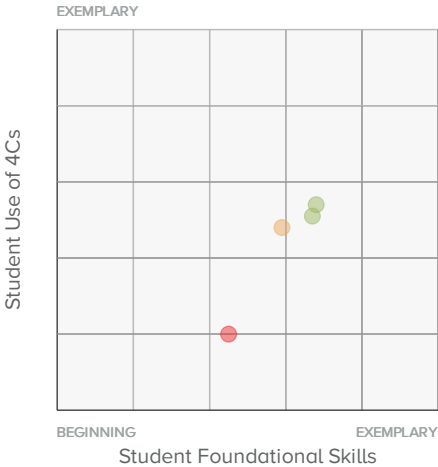
STUDENT BELIEFS



CASE™ Score Legend



Scatterplots



CASE™ Score Legend

| | | | | |
|----------------------|---------------------|-------------------------|-----------------------|------------------------|
| Beginning 800-899 | Emerging 900-999 | Proficient 1000-1099 | Advanced 1100-1199 | Exemplary 1200-1300 |
|----------------------|---------------------|-------------------------|-----------------------|------------------------|

SCHOOL SCORECARD

| Schools | Date Range | Foundational Skills | Online Skills | Multimedia Skills | Beliefs |
|-----------------------------------|-----------------------------|---------------------|---------------|-------------------|---------|
| A Macarthur Barr Middle School | May 18, 2020 - Jun 10, 2020 | ● | ● | ● | ● |
| George W Miller Elementary School | May 18, 2020 - Jun 10, 2020 | ● | ● | ● | ● |
| Highview Elementary School | May 18, 2020 - Jun 10, 2020 | ● | ● | ● | ● |
| Nanuet Senior High School | May 18, 2020 - Jun 10, 2020 | ● | ● | ● | ● |

CASE™ Score Legend



Beginning
800-899



Emerging
900-999



Proficient
1000-1099



Advanced
1100-1199



Exemplary
1200-1300