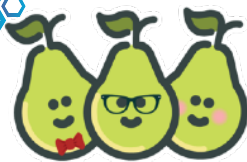




**NATIONAL  
GEOGRAPHIC  
LEARNING**

**P2 / NATIONAL GEOGRAPHIC**

Connect students to the world they live in with the tools and courses offered.



**P3 / PEAR DECK**

Connect with students, assess, collect data, and play.



**P3 / STEM CALENDAR**

See what is going on in the world of STEM education.



**P4 / EDTECH GIFTS**

'Tis the season for a variety of creative ed-tech resources.

# District 75 STEM Connect



## LEGO Robotics

This will be the 4th year of the District 75 LEGO League which continues to expand. This year's theme is [Boomtown Build](#) which focuses on creating accessible, durable, and sustainable spaces. This year's event will take place on April 6th and for the first time will be at the Queens Museum. If you attended the training and are participating, you can find [posters and resources](#) online and ask for school support if you need it.

### SPIKE PRIME

LEGO's newest kit for creating STEM projects is called [Spike Prime](#). It is a powerful STEAM learning solution for middle schools that combines LEGO bricks, coding language based on Scratch, and a programmable multi-port Hub. The hub allows for programming various components and even allows for LED display.

The goal is to allow for open-ended projects where students of all

learning levels build confidence and critical thinking skills.

For more information check out the the [Confidence Building Classroom Activities](#) for various grade levels along with [curriculum standards](#) and [unit plans](#). These include activities for an invention squad, kickstarting a business, creating life hacks, or prepping for robotics competitions along with extra resources.

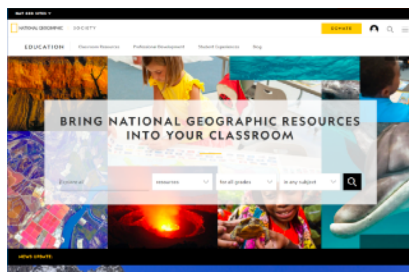
# Resource of the Month

## National Geographic

We are all familiar with National Geographic as a world leader in geography, cartography and exploration of the world. We have read the [magazine](#) for insights into the natural world and some of us have shared the [Kids Magazine](#) or [Explorer Editions](#) with our students. But Nat Geo offers much more for educators too.

### THE PERSPECTIVE

National Geographic prides itself on helping educators take a broader view of interactions between the human and natural world while considering multiple disciplinary perspectives from cultural to political to ecological and more across local, regional, and global



scales. Look at their [Learning Framework](#) across grade levels to guide your student towards improved attitudes, knowledge, and skills for whole student focused approach.

### THE COMMUNITY

A great spot for a birds-eye view of what Nat Geo offers is their [Education Blog](#) where you get stories from educators exploring the natural world with their students or interviews with Geography Bee champions. Make sure to join the [Educator Network](#) as well to connect with other dedicated educators and the resources they share.

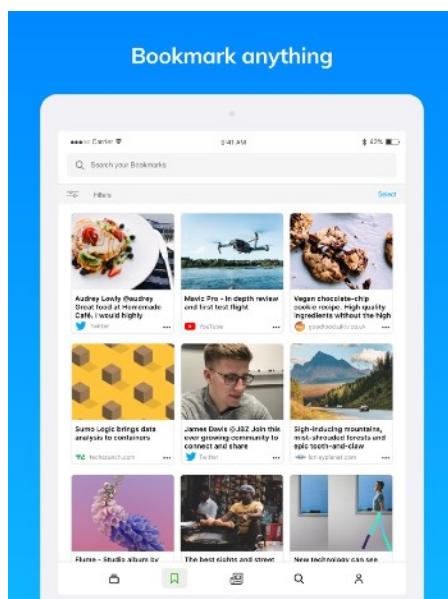
### THE TOOLS

Of course the magazines and the [National Geographic website](#) are filled with a massive collection of knowledge, but [National Geographic Kids](#) is an amazing spot for younger learners with videos, exploration zones, animal guides, and fun games to make learning playful.

Beyond that though you can explore the large array of [Nat Geo Classroom Resources](#) with media, articles, and full lessons for teachers. Our favorite though are the [mapping resources](#).

### THE PD

Nat Geo offers an [array of PD options](#) including teacher certification. The National Geographic Certification winter cohort will begin on January 6th, so be sure to [register](#) soon. It is a serious program that will meaningfully improve your practices. Doing so will also make you eligible for various [Educators Grants](#) including the [Grovevgnor Teacher Fellowship](#) which is a two-year leadership and professional development opportunity that includes an all-expenses-paid expedition with National Geographic and Lindblad Expeditions to places like the Galápagos Islands, Arctic Svalbard, Southeast Alaska, and Antarctica!



## App of the Month

[Wakelet](#) is the easiest way to capture, organize and share multi-media resources with students, teachers, and learning communities. What can you do with it?

- **Bookmark Anything:** Save the best educational content (articles, resources, videos, social media posts, etc.) you find on the web.
- **Organize & Curate:** Organize this content into engaging and meaningful collections with notes, images, videos to add context.
- **Collaborate & Share:** Invite other educators and students to contribute.
- **Make It Accessible:** Wakelet is now integrated with Immersive Reader.

Get the [Educator Guide](#) & [6 Ways to Use in the Classroom](#).

Download it for [Chrome](#), [Android](#), [iOS](#), [Firefox](#), or [Safari](#).



## Pear Deck



For those unfamiliar with Pear Deck is the assessment and screen control system connected to Google Slides. It functions similarly to Nearpod except the direct connection to Google Slides makes it each for teachers already using that platform.

### DIFFERENTIATION

**Newsela Daily Deck:** Newsela and Pear Deck have teamed up to create Daily Decks designed to spark student engagement. Each one features an adaptive news article with interactive prompts to get EVERY student learning. [Find out more here.](#)

**Student-Paced Mode:** Here's how Pear Deck Student-Paced Mode can help group student needs.

Create Diagnostic Questions to see what your students remember or already understand about the topic.

Create Activity Decks of advanced questions or research to push their thinking and understanding to the next level.

For students who pick an answer that demonstrates a slight technical misunderstanding, create a separate Deck of practice problems and metacognitive questions to help them better understand the mistake.

Start class and run a diagnostic. Before class starts, get all your Pear Deck Sessions launched. You can click Start Presenting on both of your Activity Decks and switch them into Student-Paced Mode before

class even starts. Finally, launch your Diagnostic Deck and get all students logged in as they enter class.

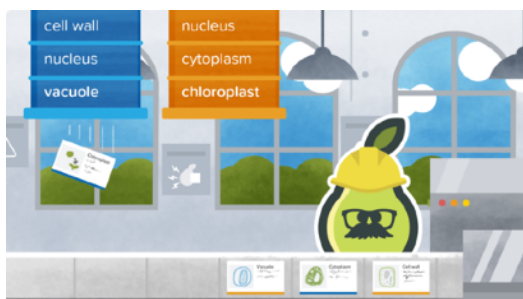
### FLASHCARD FACTORY

Flashcard Factory is a game that was designed to transform the way students engage with vocabulary. When you play Flashcard Factory students pair up and work together to create dynamic and engaging flashcards. Students collaborate to illustrate and define terms, making learning vocab an active and social experience! Flashcard Factory is free to use and works.

First, create a short list of vocabulary your students are working towards. Then students are paired up to create unique visual and written illustrations for each term. Their cards go to Quality Control where you can review and choose which ones to ship.

Once your final set is approved, save the cards. Your class can print their cards for review, or export them What's even better is it integrates well with dictionary apps as well as Quizlet and GimKit so you can take your vocabulary sets to the next level.

For more information check out the [how to handbook](#) and [help videos](#).



## District 75 STEM Calendar

December 20<sup>th</sup>  
[SPOC Meet-Up Bronx](#)

January 3<sup>rd</sup>  
[Virtual Voyages\\*](#)

January 6<sup>th</sup>  
[STEM Fair: Successful Projects](#)

January 6<sup>th</sup>  
[Regents Algebra & Geometry\\*](#)

January 8<sup>th</sup>  
[Integrating iPads](#)

January 8<sup>th</sup>  
[Everyone Can Create](#)

January 10<sup>th</sup>  
[Debate Mid-Year Refresher](#)

January 10<sup>th</sup>, 15<sup>th</sup>, 17<sup>th</sup>, & 22<sup>nd</sup>  
[Dig-In Camps](#)

January 14<sup>th</sup>  
[SPOC Meet-Up Queens \(JAMF\)](#)

January 15<sup>th</sup>  
[Virtual Reality Tour](#)

January 16<sup>th</sup>  
[Hands-On Geometry \(K-8\)\\*](#)

January 17<sup>th</sup>  
[SPOC MDM Workshop](#)

January 21<sup>st</sup>  
[Math for Early Learners with Autism](#)

January 22<sup>nd</sup>  
[3D World Mid-Year Refresher](#)

January 24<sup>th</sup>  
[Robots in the Classroom](#)



# EdTech Gift Collection

Educational technology can empower student activities in the classroom and beyond. So we scoured resources for student creativity, work exploration, and general classroom use and offer them here. Whether you want to hop into Hyperdoc happiness or just need ready to go lessons, we have

you covered. Here we share a variety of our favorite resources as a gift to you for the holidays. We hope that you can also continue to share with the other teachers in your school as well as using our Teams to share resources with each other.



District 75  
STEM

Next Issue

## APP/SKILL OF THE MONTH

We'll give an overview of an app and teach you about a basic tech skill.

## EDTECH TOOL SHARE

A number of ed tech tools across a number of categories.

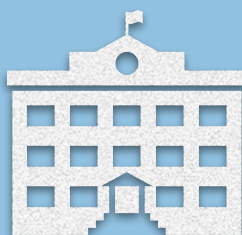
### Student Creativity

- [Learn Google Drawings & Soundtrap](#)
- [GSuite and the Writing Process](#)
- [Sketchnoting with Google Keep](#)
- [Design It Digitally](#)
- [Storytelling with Twine](#)
- [Graphic Organizers](#)
- [Creative Thinking & Problem-Solving](#)
- [Good Things Come in Hyperdocs](#)



### Beyond the Classroom

- [Google Mashup: Importing Data Into Google MyMaps](#)
- [Level Up your GEO Skills](#)
- [BreakoutEDU](#)
- [Create Your Own AR/VR](#)
- [Design Thinking Interactive Notebook](#)
- [Water for South Sudan](#)
- [Around the World](#)
- [More Now](#)



### Mix 'n Match

- [Posters for your Classroom](#)
- [The Gift of Reading](#)
- [Little Learner Activities](#)
- [Discussion Diamonds](#)
- [Ready To Go Lessons](#)
- [Create Your Own Question Trail](#)
- [Sub Plans with Style](#)
- [Surprise Bag of Learning](#)



District 75  
**TECH**Connect

**Canva Pro**  
Now Free for  
Teachers

Canva