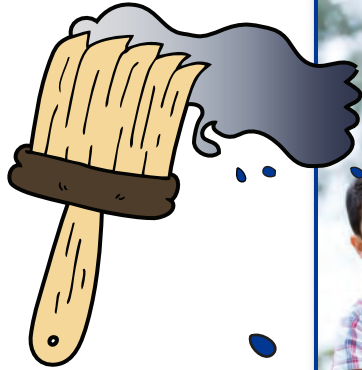


LEAD SAFE WESTMORELAND

THE LEAD PAINT HAZARD CONTROL AND
HEALTHY HOMES PROGRAM OF WESTMORELAND COUNTY



For more information contact:

Westmoreland County

Department of Planning and Community Development

Londe Dandar: 724.830.3366

LDandar@co.westmoreland.pa.us

Qualifications for the program include:

- Home built prior to 1978
- Children under the age of 6 years or a pregnant woman present in household
- Low-to-moderate income

Maximum income per year according to household size:

1 - \$ 47,500

4 - \$ 67,850

7 - \$ 84,150

2 - \$ 54,300

5 - \$ 73,300

8 - \$ 89,600

3 - \$ 61,100

6 - \$ 78,750

