

**Tattnall County Schools  
Annual Title I Parent Meeting  
2023 – 2024**



**South Tattnall Elementary School  
In Person Meeting  
Thursday, October 19, 2023  
4:00-5:00 PM**



# Presenters

Calysta DeLoach, Academic Coach

Vielka Flowers,  
Tattnall County Translator



# Welcome

*STES is proud to be a partner with parents in educating our community's children.*



# Title I Annual Parent Meeting Agenda

- ❖ What is a Title I School?
- ❖ How does our district/school spend Title I money? How is Title I Parent and Family Engagement money spent?
- ❖ What is required by law for Parent and Family Engagement?
- ❖ What are our school's Title I Schoolwide requirements?
- ❖ Schoolwide Program participation – Past and Present
  - What are our Schoolwide goals?
  - What programs/supports are in place to help students?
  - What is the state's grades report for our school?
- ❖ What curriculum does our school use?
- ❖ What tests will my child be taking?

# Title I Annual Parent Meeting Agenda continued....

- ❖ Does my child's teacher meet professional qualifications and a parent's right to know?
- ❖ What opportunities does the school provide for family engagement?
- ❖ How responsive will the school be to my questions when staff is contacted?
- ❖ McKinney-Vento Education for Homeless Children and Youth
- ❖ Closing and evaluations
- ❖ BOE Contact Information

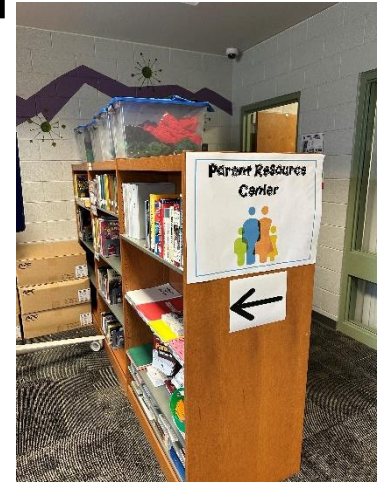
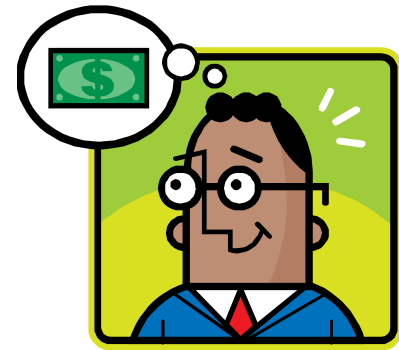
# What is a Title I school?

- ❖ Title I is the largest federally funded program for elementary, middle, and high schools.
- ❖ The U.S. Department of Education provides each state with an allocation based on census poverty data.
- ❖ The focus of the Title I program is on helping all students meet the same high standards expected of all children.
- ❖ For more information visit Georgia Department of Education website at [www.gadoe.org](http://www.gadoe.org).
- ❖ All of Tattnall County's schools are Title I schools.



# Title I money

- ❖ Title I funds may only be used to supplement, not supplant existing services.
- ❖ Our district/school utilizes the 1% of our Title I funds for parent engagement – this pays for our student handbooks, agendas, printing, parent communication, parent newsletters, parent and family engagement activities, translations and interpretation, family resource centers, and other parent resources.
- ❖ Title I meeting supplies/materials.
- ❖ If you have any questions about the Title I budget for the county, please contact Dr. Tisha Holland at 557-4726.





# Title I Parent and Family Engagement Requirements

- ❖ District Parent and Family Engagement Policy
  - (Available at [www.tattnallschools.org](http://www.tattnallschools.org) under Departments tab then select Federal Programs from drop down.)
  - Available in the Student Handbook
- ❖ School Parent and Family Engagement Policy (copies provided on table)
- ❖ School-Parent Compact (copies provided on table)
- ❖ Annual Title I Parent Meeting (prior to November 1<sup>st</sup>)
- ❖ Annual Evaluation

***While the ESSA has many requirements, there is a strong focus throughout the law on parent and family engagement notification and involvement.....***

# LEA Parent and Family Engagement Policy

## ESSA Section 1116 (a) (2)

Each Local Educational Agency (LEA) that receives Title I funds must jointly develop, and agree on with, and distribute to parents and family members of children receiving services a written parent and family engagement policy. The LEA parent and family engagement policy outlines how the district will implement programs, activities, and procedures for the engagement of parents in Title I programs. The policy will establish the district's expectations for parent and family engagement and how the district will carry out the parent and family engagement requirements.

# School Parent and Family Engagement Policy

## ESSA Section 1116 (b) and (c)

Each school that receives Title I funds must jointly develop, agree on with, and distribute to parents and family members of children receiving services a written parent and family engagement policy. The school parent and family engagement policy describes how the school will carry out the parent and family engagement requirements to ensure effective engagement of parents and to support a partnership among the school, parents, and the community to improve student academic achievement.

# **School–Parent Compact**

## **ESSA Section 1116 (d)**

Each school that receives Title I funds must jointly develop and revise with parents a school–parent compact as part of the school–level parent and family engagement policy. The school–parent compact is an agreement that outlines how parents, the entire school staff, and students will share the responsibility for improved student academic achievement and the means by which the school and parents will build and develop a partnership to help children achieve the state’s high standards.

# Annual Title I Parent Meeting

## ESSA Section 1116 (c) (1)

- ❖ Convene an annual meeting, at a convenient time, to which all parents of participating children shall be invited and encouraged to attend, to inform parents of their school's participation under this part and to explain the requirements of this part, and the right of the parents to be involved.

# Annual Evaluation

## ESSA Section 1116 (a) (2) (D) & (E)

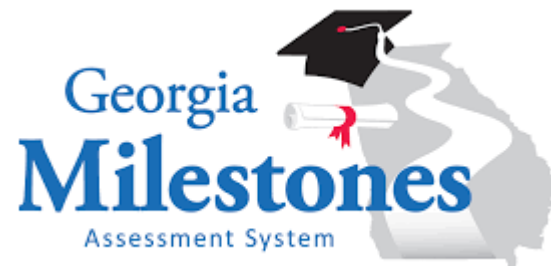
- ❖ Each Local Educational Agency (LEA) that receives Title I funds must conduct an annual evaluation of the content and effectiveness of the parent and family engagement policy in improving the academic quality of the Title I schools, including identifying possible barriers to greater participation of parents in activities and programs.

# Title I Schoolwide Program Requirements & Participation

- ▶ A Title I Schoolwide Program (SWP) addresses the educational needs of all students with comprehensive strategies for improving the whole school so that every student achieves high levels of academic proficiency.
- ▶ SWP can improve academic achievement throughout a school so that all students, particularly the lowest-achieving students, demonstrate proficiency related to the state's academic content standards.
- ▶ SWP builds on schoolwide reform strategies, rather than separate, add-on services.
- ▶ The Title I Annual Schoolwide Plan is developed with input from various stakeholders.
- ▶ Title I districts and schools are required to conduct a comprehensive needs assessment to identify student and staff needs and to determine appropriate programs, services and activities.

# Schoolwide Goals

- ▶ During the 2023-2024 school year, staff will focus on direct instruction that will lead to an increase in achievement in the areas of ELA and Math across all student subgroups by 3% on the Georgia Milestone State Assessment.
- ▶ By May of 2024, 75% of students in grades K-5 will be at or above grade level as determined by i-Ready Diagnostic 3, in the areas of ELA and Math.
- ▶ For the 2023-2024 school year, South Tattnall Elementary School will experience a 3% decrease in office referrals.



# Schoolwide programs/supports

- ▶ Eureka Squared
- ▶ Heggerty Phonics
- ▶ Amplify CKLA
- ▶ 95% Phonics Group
- ▶ i-Ready
- ▶ Student Support Staff
- ▶ Student instructional supplies
- ▶ Teacher resources
- ▶ Decodables & Novels
- ▶ PL for teachers/staff
- ▶ EIP Interventions
- ▶ RTI Interventions
- ▶ Teacher extended day
- ▶ Check and Connect
- ▶ GMAS Tutoring
- ▶ Growing Readers initiative
- ▶ ESGI
- ▶ Rosetta Stone

Class size reduction teachers  
Free breakfast/lunch programs  
PreK-K Transition Night  
PreK-5th grades Open House  
Family/Parent Nights/Activities  
Migrant paraprofessional  
Co-teachers/Inclusion  
Telehealth  
School Council  
Educator's Handbook  
PBIS  
Secret Stories  
Progress Learning  
IXL  
Flocabulary  
ELA para 2<sup>nd</sup>-5<sup>th</sup> grades  
SPED programs  
ESOL

\* You, as Title I parents, have the right to provide input in the development of the schoolwide improvement plan. You are encouraged to submit suggestions at any time throughout the school year to the school principal.

# School State Report Card

The screenshot shows the school profile for Glennville Elementary School. The address is 525 Sylvester Ashford Dr, Glennville, GA 30427. The rating is 4/10, labeled as 'Bottom 50%'. The phone number is (912) 654-3931. The website is ges.tattnallschools.org. A 'Quick Stats (2023)' box lists: Grades: Prekindergarten-5, Enrollment: 760 students, Student:Teacher Ratio: 12:1, Minority Enrollment: 47%, Overall Testing Rank: Bottom 50%, Math Proficiency: 22% (Btm 50%), Reading Proficiency: 22% (Btm 50%), and Source: National Center for Education Statistics (NCES), GA Dept. of Education. A 'SAVE SCHOOL' button is visible.

The link below is for our Georgia School Grades Report. Below are some snapshots of our last grade report.

<https://public.gosa.ga.gov/noauth/extensions/SchoolGrades-Georgia/SchoolGrades-Georgia.html?lang=English&SchoolName=north-tattnall-middle-school>

This screenshot shows a list of report card findings for Glennville Elementary School. The findings are as follows:

- Glennville Elementary School serves 760 students in grades Prekindergarten-5.
- Glennville Elementary School placed in the bottom 50% of all schools in Georgia for overall test scores (math proficiency is bottom 50%, and reading proficiency is bottom 50%) for the 2020-21 school year.
- The percentage of students achieving proficiency in math is 22% (which is lower than the Georgia state average of 36%) for the 2020-21 school year. The percentage of students achieving proficiency in reading/language arts is 22% (which is lower than the Georgia state average of 39%) for the 2020-21 school year.
- The student:teacher ratio of 12:1 is lower than the Georgia state level of 14:1.
- Minority enrollment is 47% of the student body (majority Black), which is lower than the Georgia state average of 63% (majority Black).

## IMPORTANT Note regarding 2019-2020 and 2020-2021 data:

For school years 2019-2020 and 2020-2021, various pandemic related issues resulted in a lack of data for most metrics and there was significant variation in student participation rates where data are available. Therefore, it is not advisable to make comparisons between schools and/or districts for these years. Additionally, the GaDOE was unable to calculate a CCRPI for school years 2019-2020 and 2020-2021. Since GOSA's A-F grade is based on the school's CCRPI calculation, this site will not include a letter grade for the affected years.

# School's Curriculum and Testing

**Georgia's Standards of Excellence** website and information for parents:

<https://www.georgiastandards.org/Georgia-Standards>



Georgia's academic content standards establish high expectations for all students. The Georgia Standards identify what your child needs to know and be able to do in all content areas by grade levels. The Georgia Standards form the framework of everything taught at school.

**ACCESS** for ELLs is the WIDA's set of summative English language proficiency assessments. ACCESS is taken annually by English learners in kindergarten through grade 12. ACCESS generally starts in January.



**Georgia Milestones** measures how well students have learned the knowledge and skills outlined in the state-adopted content standards in English Language Arts, Mathematics, Science, and Social Studies. Our tentative dates are:

April 30 -ELA 1

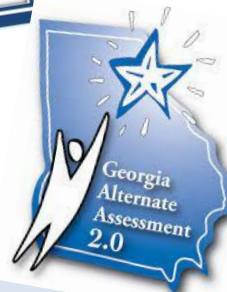
May 1 - ELA 2

May 2 - ELA 3

May 7 - Math 1

May 8 - Math 2

May 9 - Science 1&2 (5th Graders)



## Georgia Alternate

**Assessment** is comprised of standardized performance tasks and is intended to provide tiered participation within the assessment for students working at various levels of complexity.

## Testing 3x a year in Fall, Winter, and Spring

- HMH Growth Measure – Literacy - 3rd-5th grade
- i-Ready Diagnostic - ELA & Math – K-5<sup>th</sup> grade
- Acadience – Literacy – K-5<sup>th</sup> grade
- PELI – Literacy – PreK



**STUDENT GROWTH MEASURE**

**Δ30  
HMH**

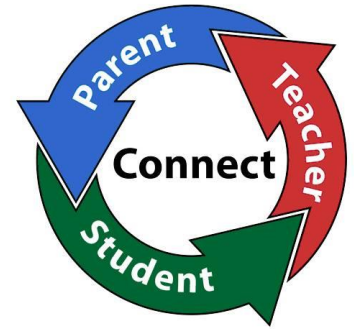
# Student Academic Expectations

How do these tests measure my child's progress? *The EOG GA Milestones measures how well students have learned the knowledge and skills outlined in the state adopted content standards in ELA, Math, and Science. ACCESS is a language proficiency test used to measure Els' social and academic proficiency in English. The GAA 2.0 enables the demonstration of achievement and progress relative to selected skills that are aligned to the GA curriculum for SWD.*

What proficiency levels is my child expected to meet? *For the EOG GA Milestones: Levels 1-4 (Beginning, Developing, Proficient & Distinguished) ACCESS: Levels 1-6 (Entering – Reaching) GAA 2.0: Levels 1-4*

How to access previous test performance, standards, and attendance about my child using the [Statewide Longitudinal Data System \(SLDS\)](#) through the school's parent portal--*Login to your Powerschool account and click SLDS Portal button. You can look at performance/assessment, attendance, etc.*

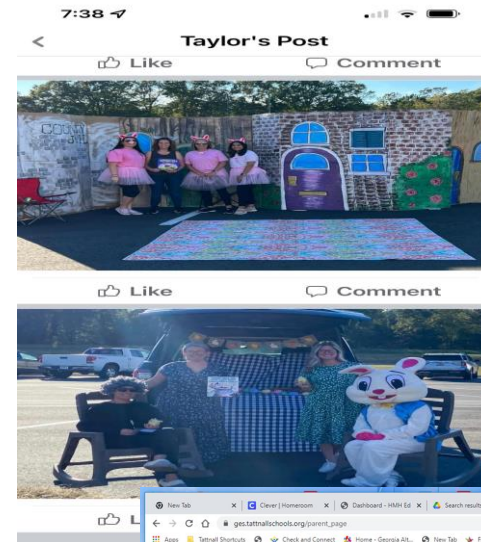
# Parents' Right to Know



- ❖ In compliance with the requirements of the Every Student Succeeds Act, parents may request professional qualifications of student's teacher(s) and/or paraprofessional(s).
- ❖ A copy of notification can be viewed on Tattnall County Schools district page by selecting Departments and Federal Programs from drop down. Copy of notice is located under Parent and Community section.
- ❖ If you wish to request information concerning your child's teacher(s) and/ or paraprofessional's qualifications, please contact the principal at your child's school or Mrs. Gwenda Johnson at the Tattnall County Board of Education (912)–557–4726.

# Family Engagement Opportunities

- School Council
- Parent Input Meeting (Spring 2024)
- Annual surveys
- Social Media
- The Journal Sentinel Newspaper
- Parent Portal
- Dojo
- Weekly Newsletters
- “Parent Institute” monthly flyers
- Parent Events
- PreK-5th Grade Open House
- PreK-K Transition Night
- Grade Nights
- Literacy Night/PTO Night/GMAS Night/Spring Fling
- Fall Festival
- School Level CNA (Comprehensive Needs Assessment) Mtg
- STES website with resources
- Teacher Class Pages - Echalk



## School's Responsiveness

\*Contact teachers by email

([firstinitiallastname@tattall.k12.ga.us](mailto:firstinitiallastname@tattall.k12.ga.us) or phone (912-654-3931) and teachers will respond within 24 hours.



# STES Contact Information

- ▶ Kristi Kaiser, Principal
  - ▶ Jill Woodson & Sasha Quarles, Assistant Principals
  - ▶ Ann Everett, Counselor
  - ▶ Calysta DeLoach, Academic Coach
- 
- ▶ 102 Loves Chapel Road, Glennville
  - ▶ 912-654-3931 (phone)
  - ▶ 912-654-4998 (fax)
  - ▶ Hours: 7:20 am-3:30 pm



# McKinney–Vento Education for Homeless Children and Youth

Tattnall County Board Of Education  
2023–2024

# What is McKinney–Vento?

- ▶ The McKinney–Vento Education for Homeless Children and Youth (EHCY) is a program designed to address the problems that homeless children and youth have face in enrolling, attending, and succeeding in school. Under this program, each homeless child and youth has equal access to the same free and appropriate public education, including preschool, as other students.

# McKinney–Vento Law

- ❖ Definition of Homeless Students
- ❖ Individuals whose nighttime residence is NOT:
  - Fixed – stationary, permanent, and not subject to change
  - Regular – used on a predictable, routine, or consistent basis
  - Adequate – sufficient for meeting both the physical and psychological needs typically met in the home (42 U.S.C. § 11434A(2)(B)(i))

# “Homeless” includes children who are:

- ❖ Sharing the housing of other persons due to loss of housing, economic hardship, or a similar reason
- ❖ Living in a motel, hotel, trailer park, or camping ground due to lack of alternative adequate accommodations
- ❖ Living in an emergency or transitional shelter
- ❖ Abandoned in hospitals

# “Homeless” includes children who are:

- ❖ Living in a public or private place not designed for or ordinarily used as a regular sleeping accommodation
- ❖ Living in a car, park, public space, abandoned building, substandard housing, bus or train station, or similar setting
- ❖ Migratory children

# McKinney–Vento Act

## Unaccompanied Homeless Youth (UHY)

- ❖ Unaccompanied = not in the physical custody of a parent or guardian
- ❖ There is a 2–Step Process for determining
- ❖ Unaccompanied youth have the same rights as other students experiencing homelessness.

# How many are there?

- ❖ **The number of students experiencing homelessness has decreased:** The number of identified students experiencing homelessness in Georgia increased every year from 2011–12 (34,379) to 2018–19 (40,337); however, the number identified in 2019–2020 has decreased (36,753). There was a 9% percent reduction from 2018–19 to 2019–20.
- ❖ According to HUD, the state's homeless population was 7,905 in 2022, including 2,784 people in families with children and 479 unaccompanied homeless youth.
- ❖ In Tattnall County we had the following number of homeless students:
  - ❖ 2013–2014 – 39
  - ❖ 2014–2015 – 39
  - ❖ 2015–2016 – 37
  - ❖ 2016–2017 – 50
  - ❖ 2017–2018 – 39
  - ❖ 2018–2019 – 34
  - ❖ 2019–2020 – 34
  - ❖ 2020–2021 – 22
  - ❖ 2021–2022 – 18
  - ❖ 2022–2023 – 28

# Common Signs of Homelessness

- ❖ Lack of continuity in education
- ❖ Poor health/nutrition
- ❖ Transportation and attendance problems
- ❖ Poor hygiene
- ❖ Lack of personal space after school
- ❖ Social and behavioral concerns
- ❖ Reaction/statements by parent, guardian, or child

# Who do I contact for help?

- ❖ The local Homeless Liaison is Dr. Tisha Holland. You can contact her at any time with questions or concerns.

(912) 557-4726

tholland@tatttnall.k12.ga.us

146 West Brazell St. Reidsville, Ga  
(Board of Education)



***Help!***

# Questions / Evaluations

- ▶ Please complete the survey at the following link or use the QR Code.
- ▶ The results of this survey will be utilized to help in the development of the Title I School–Level Parent and Family Engagement Plan and future parent and family engagement activities and events.
- ▶ If you have a question or suggestions, please contact your child's school at the number previously provided.

[https://docs.google.com/forms/d/e/1FAIpQLSdcnHvBv-8f7rXK98IjF1EEA-Zvrn55yzzu3\\_VQfpLqd2B6CA/viewform?usp=sf\\_link](https://docs.google.com/forms/d/e/1FAIpQLSdcnHvBv-8f7rXK98IjF1EEA-Zvrn55yzzu3_VQfpLqd2B6CA/viewform?usp=sf_link)



# THANK YOU FOR YOUR SUPPORT

# Tattnall BOE Contact Information

## Address:

146 West Brazell St.  
Reidsville, GA 30453

557-4726  
557-3036 (fax)

Central Office Hours:  
Monday – Thursday  
(8:00–4:30)  
Friday  
(8:00–4:00)

- ▶ Dr. Kristen Waters,  
Superintendent  
[kwaters@tattnall.k12.ga.us](mailto:kwaters@tattnall.k12.ga.us)
- ▶ Dr. Carla Waters,  
Assistant Superintendent  
[cwaters@tattnall.k12.ga.us](mailto:cwaters@tattnall.k12.ga.us)
- ▶ Dr. Tisha Holland,  
Federal Programs Director  
[tholland@tattnall.k12.ga.us](mailto:tholland@tattnall.k12.ga.us)



Tattnall County Schools	<a href="http://www.tattnallschools.org">www.tattnallschools.org</a>
North Tattnall Elementary School South Tattnall Elementary School	<a href="https://ntes.tattnallschools.org">https://ntes.tattnallschools.org</a> <a href="http://stes.tattnallschools.org">http://stes.tattnallschools.org</a>
North Tattnall Middle School South Tattnall Middle School	<a href="http://ntms.tattnallschools.org">ntms.tattnallschools.org</a> <a href="http://stms.tattnallschools.org">stms.tattnallschools.org</a>
Tattnall County High School	<a href="http://tchs.tattnallschools.org">tchs.tattnallschools.org</a>
Georgia Department of Education	<a href="http://www.gadoe.org">www.gadoe.org</a>
U.S. Department of Education	<a href="http://www.ed.gov">www.ed.gov</a>
Georgia Standards	<a href="http://www.georgiastandards.org">www.georgiastandards.org</a>

# *“Whatever It Takes”*



The Tattall County School District is committed to doing whatever it takes to ensure a quality education that affirms ALL students' value and worth and will lead to high school graduation and productive citizenship.