

Jan 1, 2020 to Present

INFRASTRUCTURE AT SCHOOL

Nanuet Union Free School District

INFRASTRUCTURE AT SCHOOL REPORT

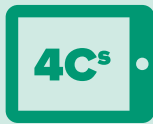
NANUET UNION FREE SCHOOL DISTRICT

CLASSROOM

ACCESS

SKILLS

ENVIRONMENT



Teachers who have difficulty getting access to high quality computers for students when needed are much less likely to plan and implement classroom activities that include digital communication, digital collaboration, digital creativity, and critical thinking.

Teachers' and students' access to technology at school is a prerequisite for 21st Century Learning. According to *NCES*, the ratio of students to computers in the classroom every day is 5.3 to 1. However, this is often not sufficient for transformative instruction to occur.

Only 61% of all Clarity teachers in the nation report that it is always easy to get access to computers when needed for class. Further only 14% of Clarity teachers across the nation rate the quality of computers and internet access at their school as excellent. Teachers who have difficulty getting access to high quality computers for students when needed are much less likely to plan and implement classroom activities that include digital communication, digital collaboration, digital creativity, and critical thinking.

Schools and districts should ensure that all students at all schools have sufficient access to technology throughout the school day. Students are digital natives who often have better access to technology outside of school as compared to inside. This results in a digital divide between school and reality for many of today's youth. Increasing access can bridge this gap.

94%



of teachers can get devices for their students when needed more than half the time



50%



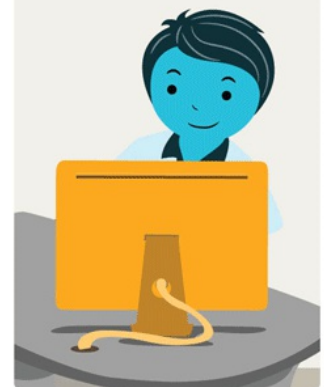
of teachers report high quality internet speed



83%



of teachers have access to a computer for their own use all the time at school



82%

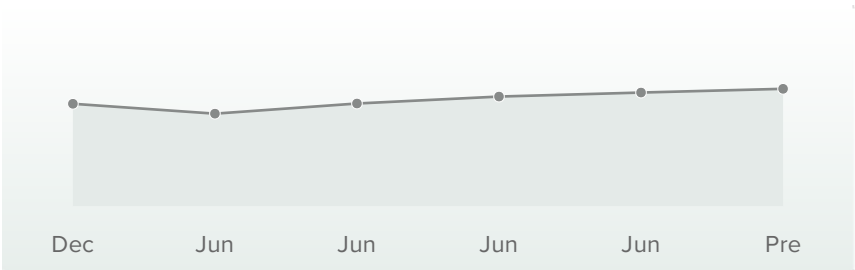
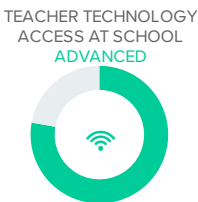
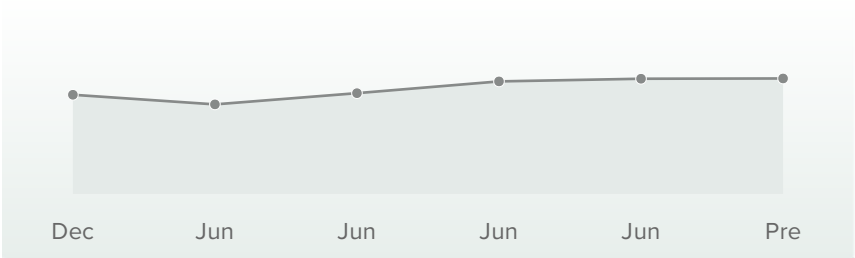
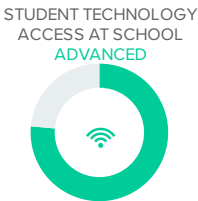


of teachers report a typical student to computer ratio of 2:1 or 1:1



Contributing Factors

The factors that most contribute to the success of your organization include ...



CASE™ Score Legend



Beginning
800-899



Emerging
900-999



Proficient
1000-1099

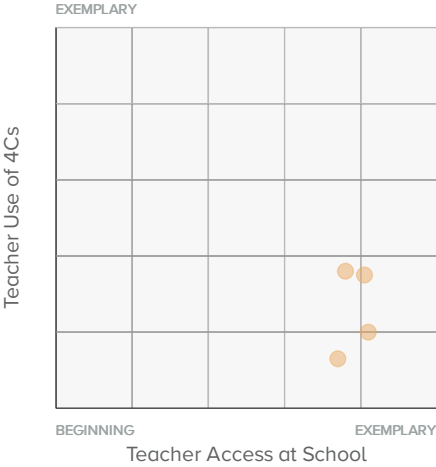
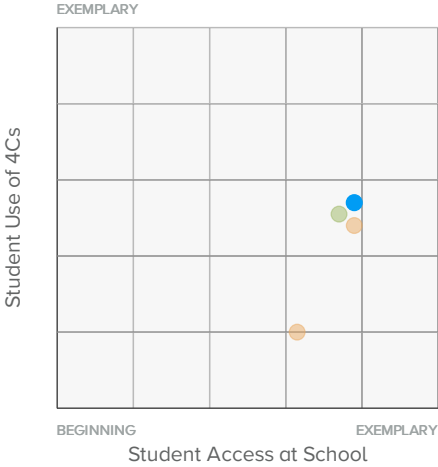


Advanced
1100-1199



Exemplary
1200-1300

Scatterplots



CASE™ Score Legend



Beginning
800-899



Emerging
900-999



Proficient
1000-1099



Advanced
1100-1199



Exemplary
1200-1300

INFRASTRUCTURE AT SCHOOL REPORT

NANUET UNION FREE SCHOOL DISTRICT

CLASSROOM

ACCESS

SKILLS

ENVIRONMENT

SCHOOL SCORECARD

Schools	Date Range	Student Access at School	Teacher Access at School
A Macarthur Barr Middle School	May 18, 2020 - Jun 10, 2020		
George W Miller Elementary School	May 18, 2020 - Jun 10, 2020		
Highview Elementary School	May 18, 2020 - Jun 10, 2020		
Nanuet Senior High School	May 18, 2020 - Jun 10, 2020		

CASE™ Score Legend



Beginning
800-899



Emerging
900-999



Proficient
1000-1099



Advanced
1100-1199



Exemplary
1200-1300

Jan 1, 2020 to Present

5 of 5