



WELCOME BACK TO ST. MATTHEW'S

OVERVIEW AND INTRODUCTIONS

Agenda

1. Introduction of Building Staff
2. Overview of our reopening and new procedures
3. Check in with our nurse and social worker PE and related service team
4. Break to go to individual teacher meetings



OUR DEDICATED STAFF

AIIM

Denise Hurvitz

Maggie Donaghy

Christine Milano

TSP/DD

Patrice Cookes

Phil Rucci

PE and Art

Nick Ceglio and Claire Ballantyne

Speech

Leslie Wrobel and Maria Armiento-Demaria

OT

Mike Novick

PT

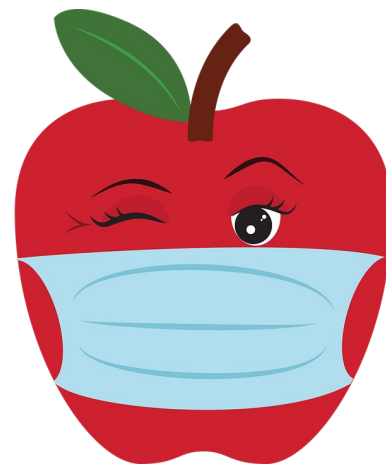
Phyllis Marto

Counseling

Katie Lockwood

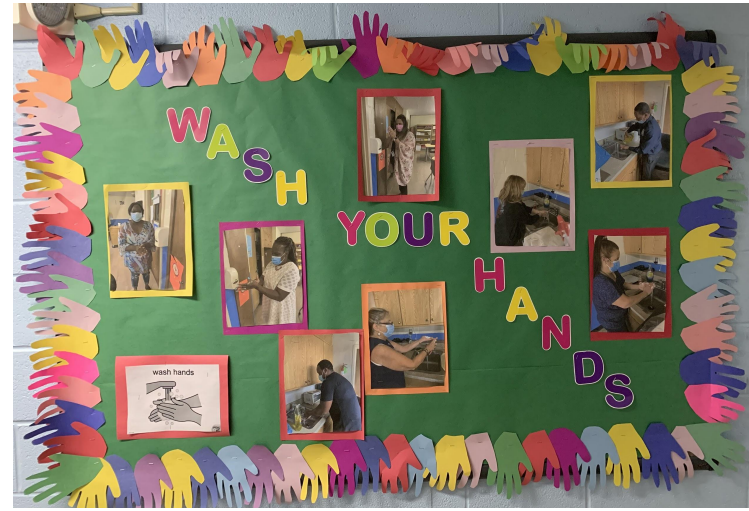
Nurse

Sdhari Payano



REOPENING

- Successful hybrid opening
- Students coming in two cohorts
- Following social distancing
- Wearing masks and handwashing
- Limiting transitions and sharing spaces and materials



SAFETY PROCEDURES

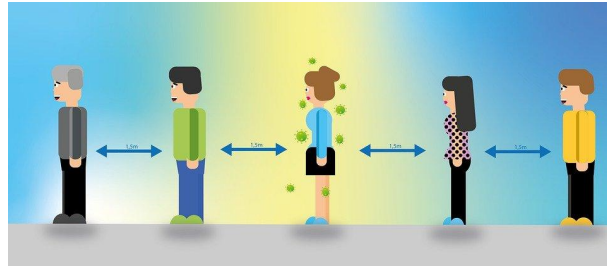


- Students and staff wear masks throughout the school day
- Mask breaks are given for eating and as needed (but in short duration)
- Students and staff engage in frequent hand washing
- Desks and tables are placed 6 feet apart
- Additional PPE for staff if masks are not able to be used (speech sessions, working on eating skills)
- Access to hand sanitizer in every classroom
- High touch surfaces and areas are cleaned three times per day
- Classrooms surfaces are cleaned often and classrooms are cleaned daily

ESSENTIAL SKILLS THAT WE ARE WORKING ON

Focusing on the new Essential Living Skills

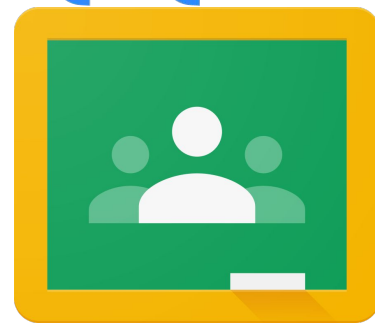
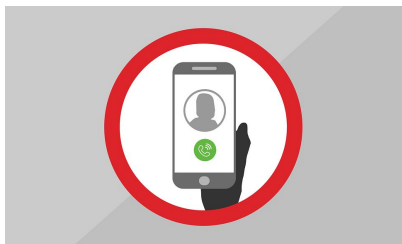
1. Wearing a Mask (a new disposable mask or a washed cloth mask daily)
2. Hand Washing
3. Social Distancing
4. Navigating a Computer



TECHNOLOGY PLATFORMS

- During remote learning periods staff and students may work using the following platforms
 - Google Meet
 - Google Classroom
 - Zoom (Teacher or related service account)
 - Email
 - Phone

zoom



COMMUNITY

- Safety is the priority
- Working to plan future safe community experiences
- Working on bringing community skills to us
 - What are the social skills needed for work
 - Appearance
 - Greetings (social distance)
 - Problem solving and asking for help
 - What are the tasks and skills needed for work that we can practice at home and in the classroom?
 - How do we get to our jobs or important places in the community?
 - Navigating the community
 - Following a map or printed directions (Mapquest)



IMPORTANT PARENT INFORMATION

- Weekly Health Attestation
 - Parents are asked to complete a weekly health attestation due either by google form or paper copy the Wednesday of each week
 - [Weekly Health Attestation-English](#)
 - [Weekly Health Attestation-Spanish](#)
- Back to School Forms due
 - Computer sign off (student and parent)
 - Emergency Contact
 - Emergency Pick up
 - Media Consent
 - Emergency Medical Release



- Organization is a group of parents, educators, and BOCES administrators that hosts several events during the school year to support parents and caregivers
- Offer a variety of informative workshops for our families:
 - Ranging from an introduction to area providers of special needs services (recreation and respite, for example)
 - Transition workshops that explore topics like legal planning for the special needs child
 - Eligibility for services and OPWDD certification for the Front Door.

MANAGING COVID-19 IN SCHOOLS

- .Temperature check on all students entering the building
- .Waiting room for ill students and staff
- .Waiting room disinfected after use
- .Student brought to their parent outside
- .Parent is provided with an email address to provide guidance on how to return to school after a positive screening and/or exposure.



Healthupdates@swboces.org

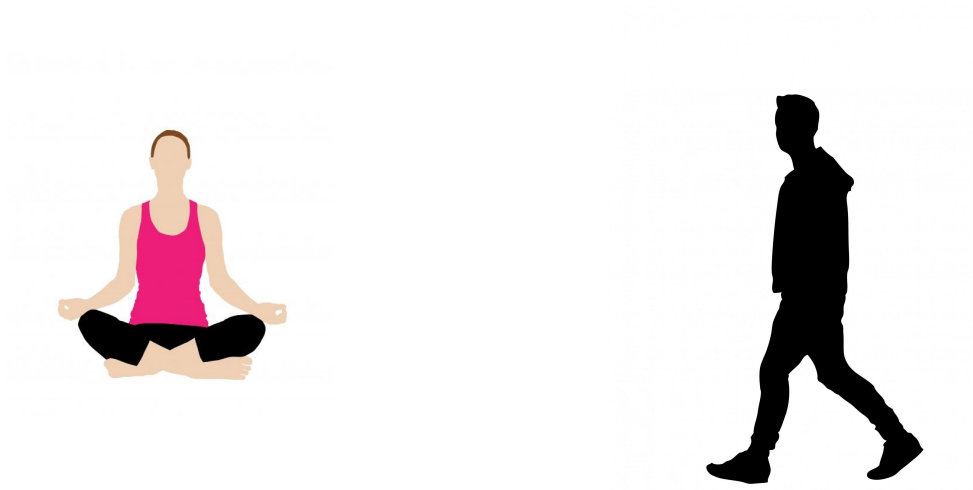
WHEN TO KEEP YOUR CHILD HOME WITH ILLNESS

- .Fever greater than 100.0F
- .Vomiting or diarrhea within the last 24 hours
- .Severe sore throat with fever/feeling ill for more than 48h
- .Honey-crusted sores around the nose, mouth or rash on body
- .Large amounts of mucous from nose
- .Severe ear pain or fluid coming from ear
- .Severe headache, especially with fever



PHYSICAL EDUCATION WITH MR. CEGLIO

- Working on Essentials for Health
 - Focus on Functional Exercise to create lifelong healthy habits
 - Focus on Safety and social distancing
 - Utilizing outdoor space
 - Individual yoga mats/pedometers/poly spots



RELATED SERVICES

- Speech, OT and PT
- Providing services as indicated on student's IEP
- Safety protocols in place
 - Desk shields, face masks/face shields, cleaning surfaces, social distance when possible
- Focus on Essentials for Health
 - Mask Wearing
 - Social Distance/Social Skills
 - Health and Hygiene
 - Essentials for Working
 - Daily Living Skills



COUNSELING

Social Emotional Learning

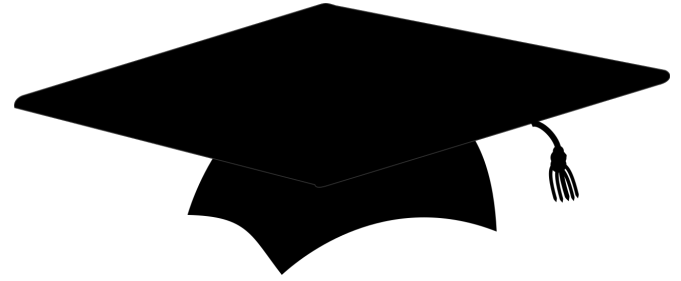
- Individual Counseling as per IEP mandates
- Group counseling
- Transition

Focus is on functional social or life skills to prepare them for real-life situations

Particular emphasis on managing new norms with COVID-19



TRANSITION - LIFE AFTER BOCES



- OPWDD?
- ACCESS-VR?
- Guardianship?
- Post-exit plans?
- Please complete the questionnaire via google docs!

Please feel free to contact me,

Katie Lockwood, School Social Worker

klackwood@swboces.org / 914.761.7516