

REOPENING



PORT CHESTER
PUBLIC SCHOOLS

UPDATE



Guiding Principles of the District's Reopening Plan

- 1** The safety and wellness of the school community (students, faculty, staff, administration, partners)
- 2** High quality instruction to students, regardless of the mode of instruction

REOPENING PLAN

AN ENORMOUS UNDERTAKING

- **Health and Safety**
- **Facilities**
- **Nutrition**
- **Transportation**
- **Social-Emotional Well-Being**
- **School Schedules**
- **Budget and Fiscal Matters**
- **Attendance**
- **Technology and Connectivity**
- **Teaching and Learning**
- **Special Education**
- **Bilingual Education and World Languages**
- **Staffing and Human Resources**

The district's number one priority is a safe learning environment that protects both the student's health and wellness as well as allowing them to effectively learn.



Face Masks



Face Shields



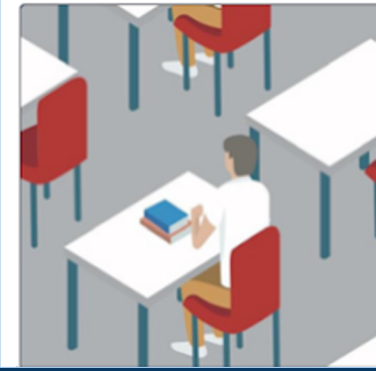
Transparent Shields



Nitrile Gloves



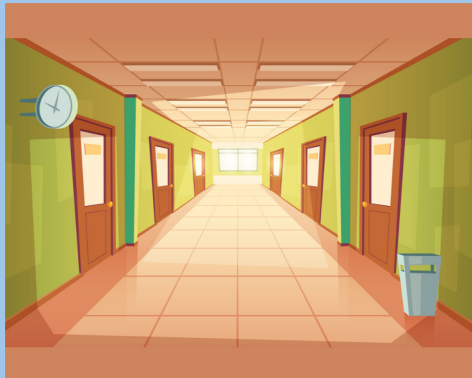
Daily Health Screenings
and Temperature Checks



Reduced and Socially-
distanced Classroom Seating



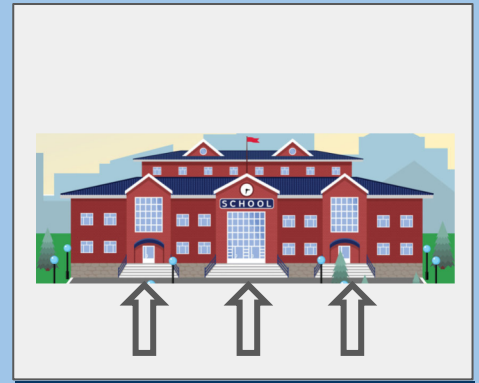
Social Distancing in
Hallways and Stairwells



Where Possible, Fewer
Classroom Changes



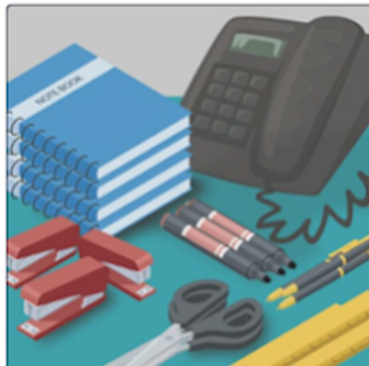
Signage to Promote
Health and Safety



Multiple Points of Entry to
Minimize Congestion



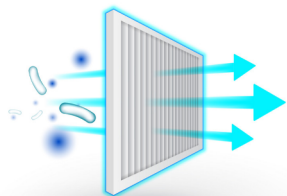
Sanitation Stations
Throughout the Building



Avoiding the Sharing of
Equipment and Supplies



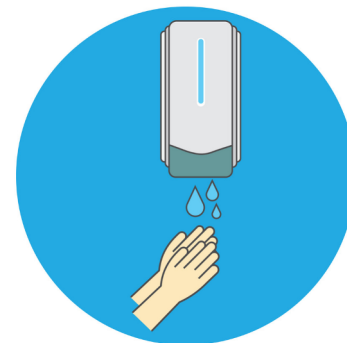
Increased Cleaning and
Sanitation



Increased Air Filtration to
Meet Required Standards



Disinfecting Equipment
and Supplies



Sanitizer Dispensers and
Refills On-hand

CLASSROOM INSTRUCTIONAL MODELS



REMOTE LEARNING

“HYBRID LEARNING”



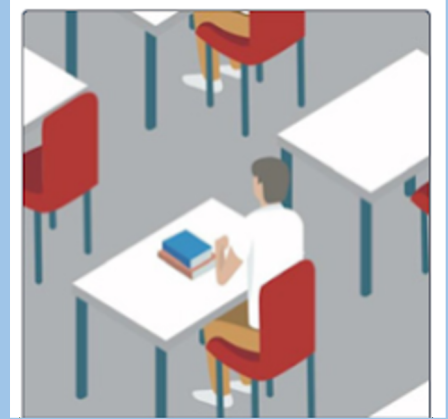
IN-PERSON LEARNING



“REMOTE LEARNING”

HYBRID LEARNING

- Students attend school in person on some days and remotely on others.
- Class sizes reduced to facilitate social distancing.
- Attendance taken daily whether students are in school or home.
- Schools will implement social distancing measures to meet established thresholds wherever possible.
- Masks are required with mask breaks occurring during the day.
- Students attending school in person do so during regular school hours following a standard school schedule, which may be adjusted from the traditional schedule.
- Students attending school remotely will be provided substantively similar opportunities to students in school.
- Remote tele-health and tele-therapy options will be available.
- Teachers meet with remote students daily utilizing Google Classroom and its Meet tool.
- Synchronous learning is a goal for remote instructional days.



Port Chester Middle School Reopening Plans

- 1. Full In-Person Reopening (if authorized by SED/Governor's Executive Order) – All students enter via one of 3 doors nearest their academy (3 grade levels) – Student will have set seating and each academy class will keep the same cohort of students in proximity to each other.**
- 2. Hybrid Learning Model**
 - Students will be assigned to one of two cohorts, either Blue Team or Silver Team.
 - Each day of school will be an A-day or B-day, and these days will flow in succession through our cycle.
 - For two consecutive days, half the student body comes to school and complies with CDC rules. The other half is at home following the period by period schedule. Regular period by period attendance is taken. All students in school and home are expected to participate. After two consecutive days, the cohorts switch from Remote to In-Person or from In-Person to Remote.
 - Wednesdays – Remote Learning Day for virtually all students; some students come for focused, personalized instruction; Faculty are also involved in planning, preparation, and professional development.
- 3. Full Remote Learning (if required by CDC/DOH/SED/Governor's Executive Order) – 100 percent of students stay home to learn remotely**
 - In the Remote Learning model, substantive instruction and student-teacher interaction pivotal to student socio-emotional and academic development will be provided to students on a regular schedule by classroom teachers.

MIDDLE SCHOOL SCHEDULE

"HYBRID LEARNING"



REMOTE LEARNING



IN-PERSON LEARNING

MONDAY

TUESDAY

WEDNESDAY

THURSDAY

FRIDAY

BLUE
TEAM

--



SILVER
TEAM

--



Hybrid Model: In-Person Learning Days by Cohort

Port Chester Middle School

**PCMS daily bell schedule for
remote and in-person
cohorts: 8:20-2:38
Nine Periods of Instruction
40-Minute Periods**



***Special Remote
Learning Half-Days in
the AM on
Wednesdays during
5-day weeks***

October 2020

Monday	Tuesday	Wednesday	Thursday	Friday
			1 REMOTE LEARNING	2 REMOTE LEARNING
5 REMOTE LEARNING	6 REMOTE LEARNING	7 REMOTE LEARNING HALF-DAY	8 REMOTE LEARNING	9 REMOTE LEARNING
12 COLUMBUS DAY	13 REMOTE LEARNING	14 REMOTE LEARNING	15 REMOTE LEARNING	16 REMOTE LEARNING
19 BLUE	20 BLUE	21 REMOTE LEARNING HALF-DAY	22 SILVER	23 SILVER
26 BLUE	27 BLUE	28 REMOTE LEARNING HALF-DAY	29 SILVER	30 SILVER

Port Chester High School Reopening Plans

1. Full In-Person Learning (if authorized by SED/Governor's Executive Order):

- School will operate on a normal 9-period schedule.

2. Hybrid Learning:

- The Port Chester High School hybrid model allows students to receive in-person instruction once a week and remote instruction the remainder of the week.
- Students will be divided into four cohorts, and each cohort will come to school on assigned days. R Team comes in on Mondays (and occasionally on Wednesday to make up for holidays that fall on a Monday), A Team on Tuesday, M Team on Thursday, and S Team on Friday.
- Wednesday – Wednesday is a day of full remote instruction and focused personalized instruction. Teachers receive training and plan and prepare both in-person and remote instruction.
- Port Chester High School will operate on a 9-period schedule.

3. Full Remote Learning (if required by CDC/DOH/SED/Governor's Executive Order):

- In the Remote Learning model, substantive instruction and student-teacher interaction pivotal to student socio-emotional and academic development will be provided to students on a regular schedule by classroom teachers.

HIGH SCHOOL SCHEDULE



“HYBRID LEARNING”



REMOTE LEARNING

IN-PERSON LEARNING

MONDAY

TUESDAY

WEDNESDAY

THURSDAY

FRIDAY

R TEAM

--



A TEAM

--



M TEAM

--



S TEAM

--



Hybrid Model: In-Person Learning Days by Cohort

Port Chester High School

**PCHS daily bell schedule for
remote and in-person
cohorts: 8:37-2:55
Nine Periods of Instruction
38-Minute Periods**



***Special Remote
Learning Half-Days in
the PM on
Wednesdays during
5-day weeks***

October 2020

Monday	Tuesday	Wednesday	Thursday	Friday
			1 REMOTE LEARNING	2 REMOTE LEARNING
5 REMOTE LEARNING	6 REMOTE LEARNING	7 REMOTE LEARNING HALF-DAY	8 REMOTE LEARNING	9 REMOTE LEARNING
12 COLUMBUS DAY	13 REMOTE LEARNING	14 REMOTE LEARNING	15 REMOTE LEARNING	16 REMOTE LEARNING
19 R	20 A	21 REMOTE LEARNING HALF-DAY	22 M	23 S
26 R	27 A	28 REMOTE LEARNING HALF-DAY	29 M	30 S

TIMELINE

September 11-18

Gather data via parent survey on Remote Learning preference

September 21-October 6

Analyze the data and work on models to adapt a hybrid schedule to the complexities of secondary school class schedules and still provide for the needs of all-remote students

October 7-18

Edit Student Schedules, reassign personnel and students as needed; continue to provide training to teachers on providing hybrid instruction

October 19

Secondary Hybrid Opening for first student teams

HYBRID OPENING PLANS

- 1. Listened to the community and to parents**
- 2. Studied and considered alternative models**
- 3. Made the best educational decisions with the information we've had at the time**
- 4. Are transitioning to a hybrid model in the hopes of full in-person learning in the future**
- 5. Are providing families this information in advance so that they can plan for childcare options**



We look forward to welcoming students back into buildings in October!

REOPENING



PORT CHESTER
PUBLIC SCHOOLS

UPDATE

