


REOPENING



PORT CHESTER PUBLIC SCHOOLS

REOPENING PLAN NEXT STEPS...

- Governor Cuomo's Expectations by August 21...
- Info posted on the District Website
- Stakeholder meetings



SCHOOLS REOPENING

- 3 parent meetings on reopening before 8/21
- 1 teacher meeting
- Post remote learning plan
- Post contact tracing plan
- Post testing plan

The image shows Governor Andrew M. Cuomo at a podium with a microphone, speaking. A nameplate in front of him reads "Governor Andrew M. Cuomo". The background is a blue geometric pattern. To the right of the image is a red banner with the text "SCHOOLS REOPENING" and a list of five bullet points detailing the next steps for school reopening.

REOPENING PLAN NEXT STEPS...

Port Chester Public School Reopening Forums

August 17-PCMS, 6:00 p.m., 7:00 p.m., 8:00 p.m.

August 18-5:00 p.m., Board of Education meeting - public comment on reopening

August 19-PCHS, 5:30 p.m. or 8:00 p.m.

August 19-King Street, 7:00 p.m.

August 20-JFK, 1:00 p.m. or 6:00 p.m.

August 20-Edison, 6:00 p.m.

August 20-Park, 7:00 p.m.

Employee Reopening Forum

August 21-10:00 a.m.

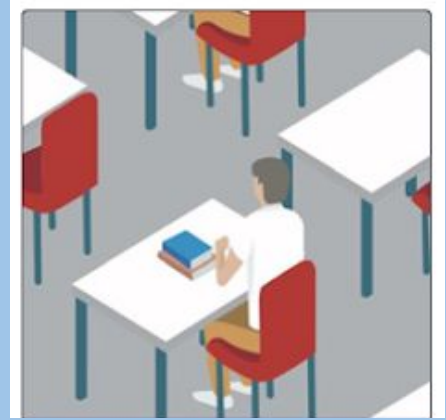
REMOTE LEARNING

- **Students attend school remotely.**
- **Attendance taken daily by teachers.**
- **Students follow a schedule and classes meet at designated times online.**
- **Students provided substantively similar opportunities to traditional instruction.**
- **Remote tele-health and tele-therapy options available.**
- **Teachers meet with students daily utilizing Google Classroom and its Meet tool.**
- **Synchronous learning is the goal for remote instructional days.**



HYBRID LEARNING

- Students attend school in person on some days and remotely on others.
- Class sizes reduced to ensure social distancing.
- Attendance taken daily whether students in school or home.
- Schools implement social distancing measures to meet established thresholds.
- Masks required with mask breaks occurring during the day.
- Students attending school in person do so during regular school hours following a standard school schedule, which may be adjusted from the traditional schedule.
- Students attending school remotely will be provided substantively similar opportunities to students in school.
- Remote tele-health and tele-therapy options available.
- Teachers meet remotely with students daily utilizing Google Classroom and its Meet tool.
- Synchronous learning is a goal for remote instructional days.

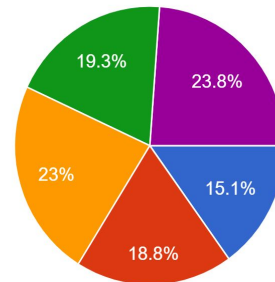


JULY FAMILY SURVEY RESULTS

In mid-July, we surveyed families regarding their comfort level about reopening assuming appropriate safety measures in place.

- **24% of parents were very uncomfortable and would request remote learning for their child.**
- **19% were uncomfortable and may be requesting remote learning for their child.**
- **While state guidance indicated that only those determined medically-vulnerable or at high-risk of illness due to COVID-19 would be eligible for remote learning, we now know the Governor supports stakeholder views.**

1. If some form of in-person learning resumes in the fall, and assuming appropriate safety measures are in place, how comfortable are you having your child return to school? *que su hijo(a) regrese al edificio de la escuela?*
2,814 responses



- Very Comfortable, I will definitely send my child to school when it is open. | Muy cómodo/a
- Comfortable, I will send my child to school when it is open. | Cómodo/a, e...
- Uncomfortable, but I will send my child to school anyway. | Incómodo/a, pero...
- Uncomfortable, I may request a remote-learning option. | Incómodo/a, probabl...
- Very uncomfortable and will request a remote-learning option. | Muy incómo...

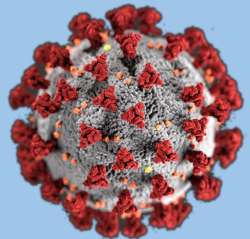
AUGUST FAMILY SURVEY RESULTS

In our current family survey regarding their preference for reopening, given the choice of a remote learning model to start the school year, results are clear that:

- **63% of our parents students prefer remote learning for school opening.**
 - **22% want their children to at least start the school year remotely.**
 - **20% want their children to be remotely educated at least through January.**
 - **21% want their children to be remotely educated the entire school year.**

WHAT ABOUT HEALTH RISKS TO ADULTS?

- **Our ability to maintain sufficient in-person staffing to serve student instructional needs in a hybrid or in-person environment is a significant factor.**
- **Employees are entitled to accommodations and protections by multiple federal and state labor laws.**
- **Early indicators show that nearly 15% of our professional staff may be categorized in high-risk health categories, inhibiting in-person contact with students.**



K-5 School Hybrid Learning Model



1. There are two group of students: *In-Person* (with social distancing) & *Remote* (at home instruction).
2. Each class is broken into 2 cohorts (see weekly schedule), Cohort A and Cohort B.
3. Classroom teachers conduct lessons to their in-person students while substantive instruction and student-teacher interaction pivotal to student socio-emotional and academic development will be provided to students learning remotely.
4. Schedule includes small-group instruction (differentiation) and additional help.
5. Special teachers provide instruction for classrooms, as per weekly schedules. Instructional format follows the classroom teachers with subject specific classes.
6. Weekly schedule: AA - (PC) - BB
 - (A) Monday | (A) Tuesday | (PC) Wednesday | (B) Thursday | (B) Friday
Cohort A *Cohort A* All remote *Cohort B* *Cohort B*
7. On PC Day, Teachers conduct remote instruction, plan, prepare, align their instruction, and receive professional development.

K-5 HYBRID SCHEDULE



REMOTE LEARNING

“HYBRID LEARNING”



IN-PERSON LEARNING

MONDAY

TUESDAY

WEDNESDAY

THURSDAY

FRIDAY

**COHORT
A**

--



**COHORT
B**

--



Hybrid Model: In-Person Learning Days by Cohort

K-5 Schools

September 2020

Monday	Tuesday	Wednesday	Thursday	Friday
	¹ STAFF ONLY	² STAFF ONLY	³ STAFF ONLY	⁴ REMOTE LEARNING
⁷ LABOR DAY	⁸ A	⁹ A	¹⁰ B	¹¹ B
¹⁴ A	¹⁵ A	¹⁶ REMOTE LEARNING	¹⁷ B	¹⁸ B
²¹ A	²² A	²³ REMOTE LEARNING	²⁴ B	²⁵ B
²⁸ YOM KIPPUR	²⁹ A	³⁰ A		

October 2020

Monday	Tuesday	Wednesday	Thursday	Friday
			¹ B	² B
⁵ A	⁶ A	⁷ REMOTE LEARNING	⁸ B	⁹ B
¹² COLUMBUS DAY	¹³ A	¹⁴ A	¹⁵ B	¹⁶ B
¹⁹ A	²⁰ A	²¹ REMOTE LEARNING	²² B	²³ B
²⁶ A	²⁷ A	²⁸ REMOTE LEARNING	²⁹ B	³⁰ B

K-5 School Remote Learning Model



100% Remote Learning Model for ALL ELEMENTARY SCHOOLS

1. Teachers follow classroom schedules as they would for In-Person Learning.
2. Principals provide schedules to teachers; teachers deliver substantive instruction providing student-teacher interaction vital to student socio-emotional and academic development for each subject area.
3. After lessons, small group instruction (differentiation) occurs.
4. Special area teachers like music and Physical Education provide instruction to students as per weekly schedules. Instructional format follows the classroom teachers with subject-specific classes.
5. Google Classrooms post assignments similarly.
6. Students receive district Chromebooks when a comparable device is not available in the home.
7. Teachers survey their students/families to ensure each has WiFi access. For students with limited or no access to WiFi, the district is purchasing hotspots to secure WiFi.

Middle School Hybrid & Remote Learning Reopening Options

1. Hybrid Learning Model

- **Students assigned to one of two cohorts, Cohort 1 or Cohort 2.**
- **Each day of school is an A-day or B-day, and these days flow in succession through a cycle.**
- **For two consecutive days, half the student body comes to school. The other half is at home following the period by period schedule. Regular period by period attendance is taken. All students in school and home are expected to participate. After two consecutive days, the cohorts switch from Remote to In-Person or from In-Person to Remote.**
- **Wednesdays – Remote Learning Day for virtually all students; some students come for focused, personalized instruction; Faculty are also involved in planning, preparation, and professional development.**

2. Full Remote Learning – 100 percent of students stay home receiving remote instruction from teachers

- **In the Remote Learning model, substantive instruction and student-teacher interaction pivotal to student socio-emotional and academic development is provided to students on a regular schedule by classroom teachers.**

MIDDLE SCHOOL HYBRID LEARNING SCHEDULE



REMOTE LEARNING

IN-PERSON LEARNING

MONDAY

TUESDAY

WEDNESDAY

THURSDAY

FRIDAY

**COHORT
1**

--



**COHORT
2**

--



MIDDLE SCHOOL HYBRID LEARNING SCHEDULE BY COHORT

September 2020

Monday	Tuesday	Wednesday	Thursday	Friday
	¹ STAFF ONLY	² STAFF ONLY	³ STAFF ONLY	⁴ REMOTE LEARNING
⁷ LABOR DAY	⁸ 1	⁹ 1	¹⁰ 2	¹¹ 2
¹⁴ 1	¹⁵ 1	¹⁶ REMOTE LEARNING	¹⁷ 2	¹⁸ 2
²¹ 1	²² 1	²³ REMOTE LEARNING	²⁴ 2	²⁵ 2
²⁸ YOM KIPPUR	²⁹ 1	³⁰ 1		

October 2020

Monday	Tuesday	Wednesday	Thursday	Friday
			¹ 2	² 2
⁵ 1	⁶ 1	⁷ REMOTE LEARNING	⁸ 2	⁹ 2
¹² COLUMBUS DAY	¹³ 1	¹⁴ 1	¹⁵ 2	¹⁶ 2
¹⁹ 1	²⁰ 1	²¹ REMOTE LEARNING	²² 2	²³ 2
²⁶ 1	²⁷ 1	²⁸ REMOTE LEARNING	²⁹ 2	³⁰ 2

High School Hybrid & Remote Learning Reopening Options

1. Hybrid Learning

- The number of students attending in person is determined by CDC social distancing rules governed by classroom square footage and enrollment.
- The hybrid model allows students to receive in-person instruction once weekly and remote instruction the remainder of the week.
- Students are divided into four cohorts, and each cohort comes to school on assigned days. Cohort 1 comes in on Mondays (and occasionally on Wednesday to make up for holidays that fall on a Monday), Cohort 2 on Tuesdays, Cohort 3 on Thursdays, and Cohort 4 on Fridays.
- Wednesday – Wednesday is a day of full remote instruction and focused personalized instruction. Teachers receive training and plan and prepare both in-person and remote instruction.
- Port Chester High School will continue to operate on a 9-period schedule.

2. Full Remote Learning

- In the Remote Learning model, substantive instruction and student-teacher interaction pivotal to student socio-emotional and academic development is provided to students on a regular schedule by classroom teachers.

HIGH SCHOOL HYBRID MODEL SCHEDULE



REMOTE LEARNING

IN-PERSON LEARNING

MONDAY

TUESDAY

WEDNESDAY

THURSDAY

FRIDAY

COHORT 1 --



COHORT 2 --



COHORT 3 --



COHORT 4 --



HIGH SCHOOL HYBRID MODEL SCHEDULE BY COHORT

September 2020

Monday	Tuesday	Wednesday	Thursday	Friday
	¹ STAFF ONLY	² STAFF ONLY	³ STAFF ONLY	⁴ REMOTE LEARNING
⁷ LABOR DAY	⁸ 2	⁹ 1	¹⁰ 3	¹¹ 4
¹⁴ 1	¹⁵ 2	¹⁶ REMOTE LEARNING	¹⁷ 3	¹⁸ 4
²¹ 1	²² 2	²³ REMOTE LEARNING	²⁴ 3	²⁵ 4
²⁸ YOM KIPPUR	²⁹ 2	³⁰ 1		

October 2020

Monday	Tuesday	Wednesday	Thursday	Friday
			¹ 3	² 4
⁵ 1	⁶ 2	⁷ REMOTE LEARNING	⁸ 3	⁹ 4
¹² COLUMBUS DAY	¹³ 2	¹⁴ 1	¹⁵ 3	¹⁶ 4
¹⁹ 1	²⁰ 2	²¹ REMOTE LEARNING	²² 3	²³ 4
²⁶ 1	²⁷ 2	²⁸ REMOTE LEARNING	²⁹ 3	³⁰ 4

K-5 Remote Learning Plan Student Schedules

ELEMENTARY SCHOOLS (Grades K-5)

Daily Regular Schedule: 8:50-2:30 made up of periods that include synchronous instruction and some asynchronous activities and an hour-long lunch period

Sample Student Day:

8:50-9:00	Morning Meeting
9:00-9:30	Writing
9:30-10:00	Response to Intervention (RTI)
10:00-10:30	Science, Physical Education or Music
10:30-11:15	Guided Reading
11:15-12:00	Reading Workshop
12:00-1:00	Lunch
1:00-2:00	Math
2:00-2:30	Social Studies/Art/Current Events, etc.

High School & Middle School Remote Learning Plan

Student Schedules

Daily Regular Schedule: 8:25-3:00, made up of 30-minute periods of synchronous learning, a 60-minute lunch period, and a 30-minute scheduled small- or individual-meeting period with teachers.

Parameters: Attendance taken daily; Periods 1-9 on Monday, Tuesday, Thursday, and Friday; Wednesdays run on a condensed Period 1-9 schedule from 8:25-12:05.

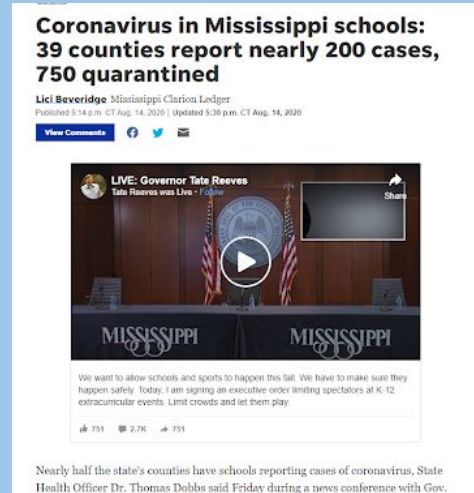
Sample Student Day:

Period 1	8:25 - 8:55
Period 2	9:00 - 9:30
Period 3	9:35- 10:05
Period 4	10:10 - 10:40
Period 5	10:45 - 11:15
Period 6	11:20 - 11:50
Lunch Time	11:50 - 12:50
Period 7	12:50 - 1:20
Period 8	1:25 - 1:55
Period 9	2:00 - 2:30
Scheduled Small Group Meeting Period	2:30-3:00

Learning from School Reopenings Across the U.S.



Indiana "Middle School Students in Quarantine"--**Fox 59 Report link**
Or type <https://tinyurl.com/y5blbnva>

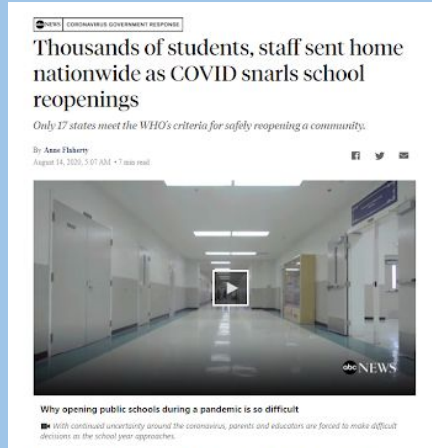


"Coronavirus in Mississippi Schools"--**Mississippi Clarion Ledger link** or type
<https://tinyurl.com/y46qezcx>



"Early-Opening U.S. School Districts Are Being Disrupted By Positive Cases Of The Coronavirus"--**Forbes link** or type 21
<https://tinyurl.com/y5y8o622>

Learning from School Reopenings Across the U.S.



"Thousands of students, staff sent home nationwide as COVID snarls school reopenings"—**ABC News link** or type <https://tinyurl.com/y2b6muub>



"1,193 Quarantined after suburban Atlanta county opened its schools"—**NY Times link** or type <https://tinyurl.com/y68zxoyn>

Learning from School Reopenings Across the U.S.

Listen to the data on school reopening

Whether and how to reopen is (or at least, should be) a fluid decision, responsive to changing conditions and an evolving understanding of COVID-19.

By The Editorial Board | Updated August 13, 2020, 4:43 p.m.



Education

More N.J. schools say they will go all-remote, one day after Murphy announces revised reopening rules

Updated Aug 13, 2020; Posted Aug 13, 2020

f 3,264

By Kelly Heyboer | NJ Advance Media for NJ.com and Adam Clark | NJ Advance Media for NJ.com

The list of New Jersey school districts asking the state to let them start the school year with all virtual classes is growing as local officials reconsider their plans in the wake of Gov. Phil Murphy's announcement that the state is revising its reopening guidelines.



“More N.J. schools say they will go all-remote”--NJ.com link or type <https://tinyurl.com/y5vwxc6q>

EDUCATION

New Rochelle schools will have an all-virtual opening, joins Suffern schools

Superintendent Laura Fejoo will be holding an online information session tonight at 6:00 p.m. to answer parent questions about this decision.

Sophie Grosserode | Rockland/Westchester Journal News

Published 4:01 p.m. ET Aug. 13, 2020

View Comments f t e

New Rochelle is the second Lower Hudson Valley district to announce they will start the school year online.

The 10,000-student Westchester district will hold all classes online through at least the month of September, then will reevaluate to decide if a hybrid opening is feasible.

“As difficult as this decision is, I feel it is my obligation as your Superintendent to place the health and well-being of teachers, staff, students and their families above all else,” said Superintendent Laura Fejoo in an email to the community.

“As much as I’d like students to learn in their classrooms, we do not know enough about the COVID virus at this time to be confident that people will be safe to return to our schools as a hybrid model would require.”

It is possible that more districts will come forward in the coming days with similar announcements. There is still uncertainty around how much children are affected by COVID-19 or how bad an outbreak in a school could still be even with the current safety guidelines.

New Rochelle joins Suffern schools for remote opening--LoHud.com link or type <https://tinyurl.com/y6jehg9v>

“Listen to the data on school reopening”--The Boston Globe link or type <https://tinyurl.com/y5zthdux>

Learning from School Reopenings Across the U.S.

CORONAVIRUS

Seattle School Board approves remote learning plan to start the school year

--KING5.com link
or type
<https://tinyurl.com/yy9emz79>



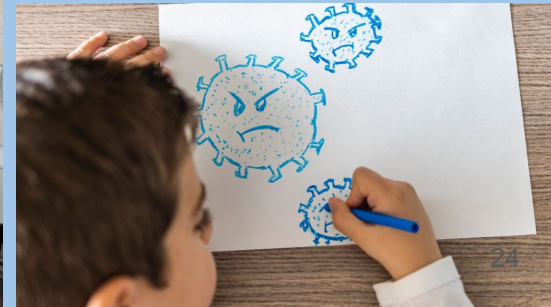
--CNN link or type
<https://tinyurl.com/y5vzmm86>

"Remote Learning is Hard. Losing Family Members is Worse"
--NYTimes link or type
<https://tinyurl.com/y2rs58zo>

Remote Learning Is Hard. Losing Family Members Is Worse.

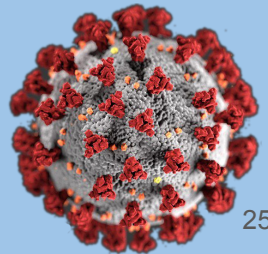
I'm a low-income student in a crowded apartment, and my family is vulnerable to Covid-19. The benefits of returning to school are not worth our health.

By Isaac Lozano
Mr. Lozano is a high school senior.
Aug. 13, 2020



PLAN A OR PLAN B? Considerations...

1. The health, safety, and well-being of our students, faculty, staff, administration and partners are the paramount considerations in all decision making.
2. Local stakeholder values and opinion survey data.
3. Data gleaned from the experiences of U.S. school districts already opened.
4. Other related national news - [Coronavirus Vaccine Tracker](#) or type <https://tinyurl.com/y9qjt4re> - See NY Times August 14.
5. High quality instruction to students, regardless of the mode of instruction.



PLAN A - REMOTE LEARNING GRADES K-12

- 1. All K-12 schools open in September with a full remote learning environment.**
- 2. Professional staff deliver instruction from our school buildings, ensuring immediate access to technology like Smart Boards and district high speed servers, professional collaboration and training, and technical support.**
- 3. The remote learning environment transitions to a hybrid or full in-person model for October depending on COVID-19 infection rates in the region and/or updated guidance from the CDC, SED, DOH, Governor, or feedback from district stakeholders.**

PLAN B - HYBRID LEARNING GRADES K-12

- 1. All K-12 schools open in September using a hybrid learning model.**
- 2. Professional staff deliver instruction from our school buildings, ensuring access to technology like Smart Boards and district high speed servers, professional collaboration and training, and technical support.**
- 3. Schools maintain the hybrid model depending on COVID-19 infection rates in the region and/or updated guidance from the CDC, SED, DOH, Governor, or feedback from district stakeholders, which could trigger immediate enactment of remote learning or conversely, permit full time in-person learning.**

SHOULD THERE BE A PLAN C FOR FULL IN-PERSON INSTRUCTION FOR SEPTEMBER GRADES K-12?

Based on available data, local stakeholder survey data, and experiences of U.S. districts opened already, this does not appear safe or viable at this time.

REOPENING



PORT CHESTER PUBLIC SCHOOLS