



NEW EXPLORATIONS INTO SCIENCE, TECHNOLOGY + MATH

**Welcome Students and
Families to our Grades 9-12
Virtual Open House!**

Upper Grades Open House

- ✱ NEST+m Ethos
- ✱ Upper Grade Core Academic Course Sequences
- ✱ Upper Grade Advanced Placement Courses
- ✱ Special Education Program
- ✱ Admissions Rubric
- ✱ Special Offerings in Math and Science
- ✱ Special Offerings in the Humanities
- ✱ Athletics and Clubs
- ✱ Frequently Asked Questions (FAQ's)
- ✱ 2019 College Acceptances
- ✱ Contacts

NEST+m Ethos

nest**m**

NEW EXPLORATIONS INTO SCIENCE, TECHNOLOGY + MATH



INTELLECTUALISM



INCLUSIVITY



COLLABORATION



EXPLORATION

AT NEST+M, INTELLECTUALISM, INCLUSIVITY, COLLABORATION
AND EXPLORATION WITHIN AND BEYOND OUR SCHOOL
COMMUNITY ENABLE OUR STUDENTS TO LEAD LIVES FILLED
WITH LEARNING, DISCOVERY AND PURPOSE.

nest**m**

NEW EXPLORATIONS INTO SCIENCE, TECHNOLOGY + MATH

Upper Grades Core Math and Science Course Sequences

Grade	Math	Science
9	Algebra or Geometry	Regents Living Environment or Regents Physics
10	Geometry or Algebra 2 / Trig	Regents Chemistry, AP Physics 1, or AP Biology
11	Pre-Calculus, AP Statistics, or Calculus AB	Living Environment, AP Biology, AP Physics 1 or AP Chemistry
12	AP Statistics, Calculus AB or BC	Living Environment, AP Biology, or AP Chemistry

Upper Grades Core English And Social Studies Course Sequences

Grade	English	Social Studies
9	English 9	Global History 9
10	English 10	AP World History
11	English Language and Composition	Regents US History or AP US History
12	English 12 or AP English Literature and Composition	Economics / Participation in Government

Upper Grades College Board Advanced Placement (AP) Classes

STEM	Humanities
AP Physics 1 AP Chemistry	AP World History AP US History AP Psychology
AP Computer Science Principles	AP English Literature AP English Composition
AP Calculus AB AP Calculus BC AP Statistics	AP Spanish Language
AP Biology	

Special Education

- ✱ NEST+m has a full inclusion program that features:
 - Integrated Collaborative Teaching (ICT) across disciplines
 - SETSS classes for focused academic support
 - Mandated services in speech, counseling, occupational / physical therapy
 - A growing population of “2e” or “Twice Exceptional” students

Upper Grades Admissions Rubric 2019-2020

General Education Students (GE)		Students with Disabilities (SWD)*	
Ranked	May be ranked	Ranked	May be ranked
90 or above core academic cumulative average on 7th Grade final report card. 55%	Approaches criteria (does not meet all ranking criteria) but there are less than 4 times the match target of candidates to rank. Students will be ranked in order of highest academic performance per cumulative average (7th Grade) and State Exam Scores <i>until the match target is reached.</i>	85 or above core academic cumulative average on 7th Grade final report card. 55%	Approaches criteria (does not meet all ranking criteria) but there are less than 4 times the match target of candidates to rank. Students will be ranked in order of highest academic performance per cumulative average (7th Grade) and State Exam Scores <i>until the match target is reached.</i>
10 or less days late 10 or less days absent 5%		13 or less days late 13 or less days absent 5%	
7th Grade State Math and ELA Exam Scores: • Math level 3-4 • ELA level 3-4 40%		7th Grade State Math and ELA Exam Scores: • Math level 2.75-4 • ELA level 2.75-4 40%	

- NEST+m is a citywide screened program and does not give geographic priority to students from any district or borough;
- Each student is assigned a final rank based on the sum of (core academic cumulative average rank x 55%), attendance (5%) and (State Math and ELA Exams Score Rank x 40%).

*Seats are divided into two groups: General Education (GE) or Students with Disabilities (SWD). Your application will show which seat group you are in: GE or SWD. It is not something that you choose.

General Education (GE) seats

- For students who receive general education instructional programming.
- For students who receive special education instructional programming that is not ICT (integrated co-teaching).

Students with Disabilities (SWD) seats

- Only students with an ICT (integrated co-teaching) designation are eligible for Students with Disabilities (SWD) seats.

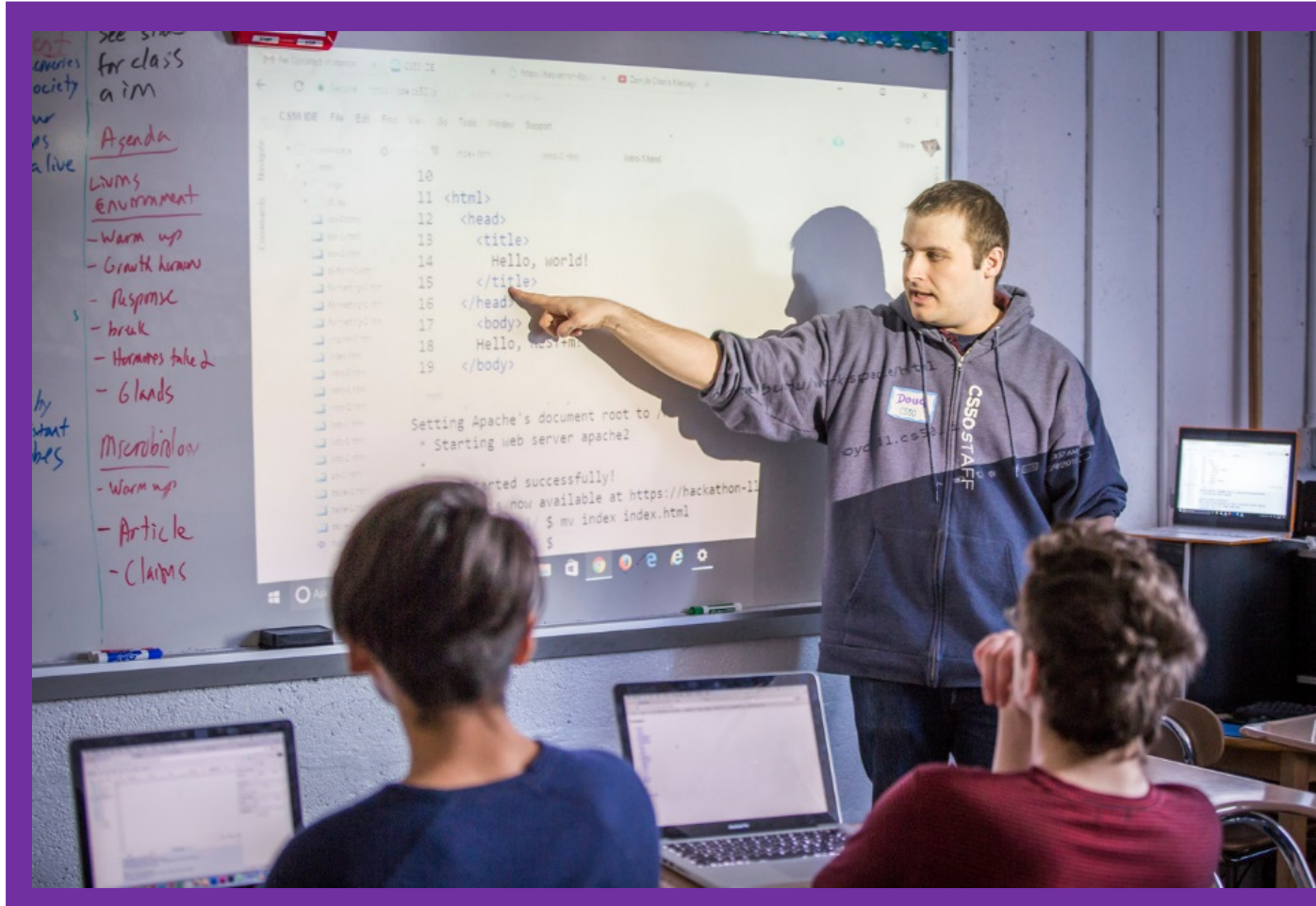
Special Offerings in Math and Science

- ✱ Computer Science Partnership with Harvard University and Microsoft (CS50 Curriculum)
- ✱ STEM Journal, “The Explorers”
- ✱ Electives including Experimental Chemistry, 3D Modeling, Bioengineering, Microbiology, Environmental Biology
- ✱ Bridge Building Competition (9th Grade Physics)

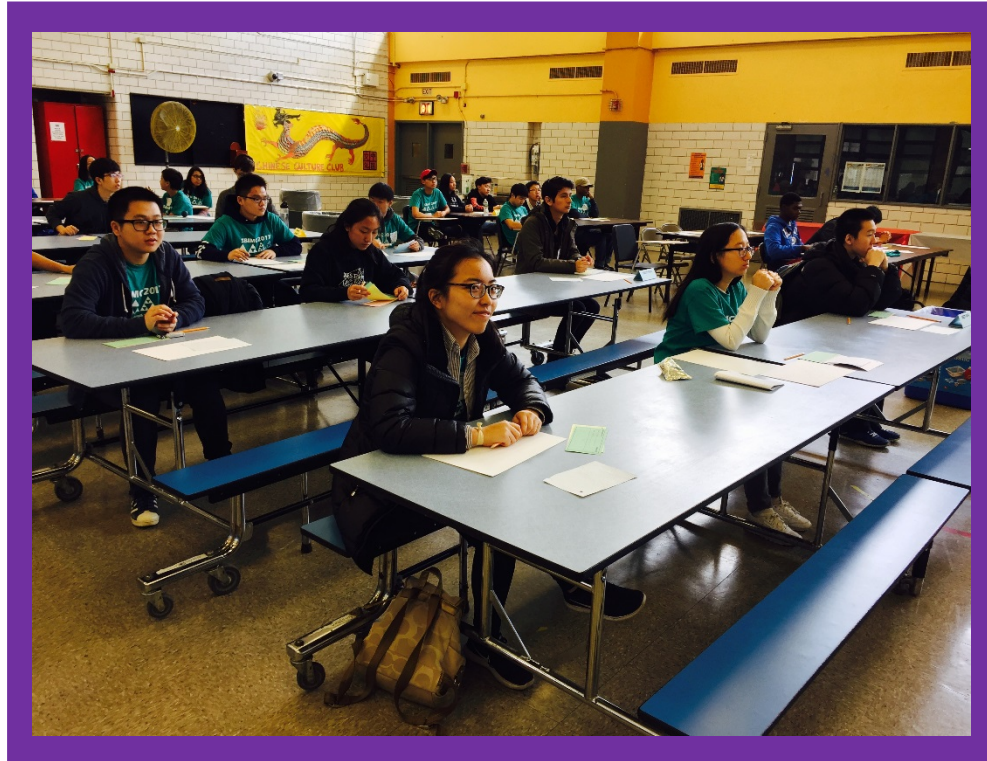
Harvard University Professor David Malan leading NEST+m Students at the CS50 Hackathon



Teaching Coding at the CS50 Hackathon



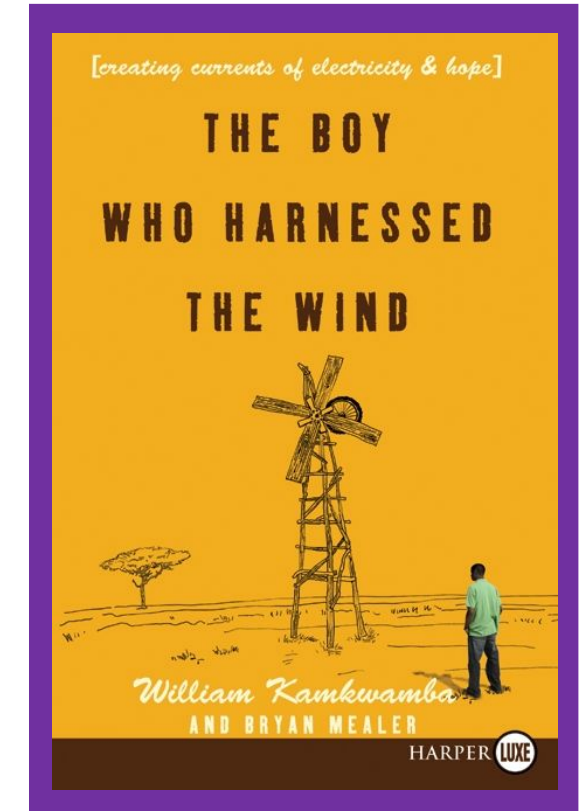
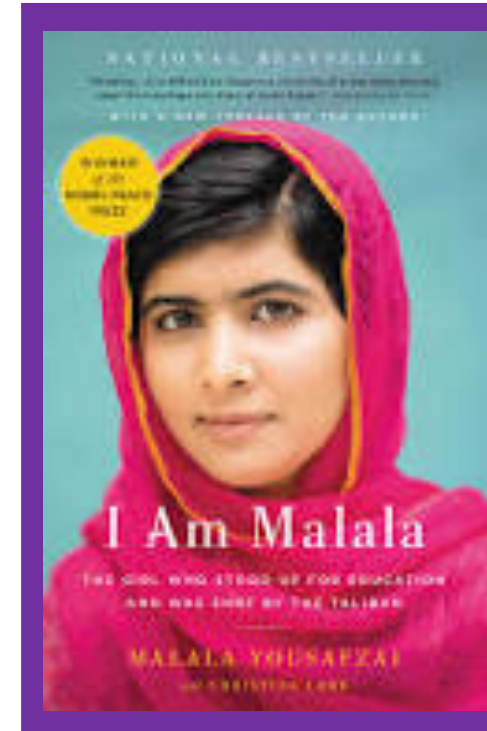
NEST+m UG Math Team



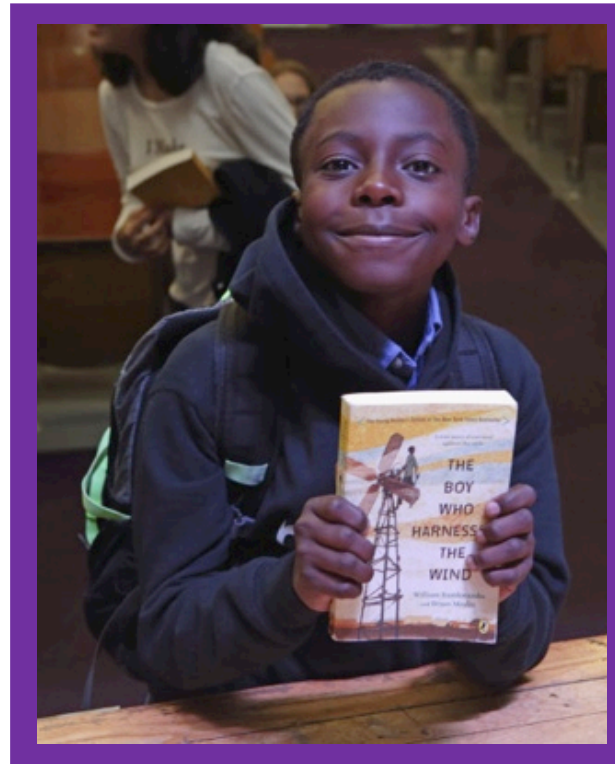
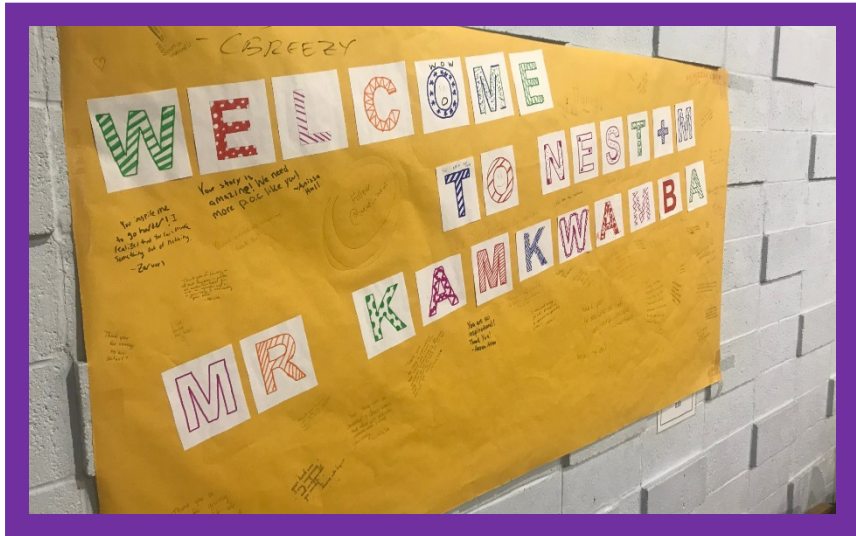
Special Offerings in The Humanities

- ✱ Elective Classes: African American History, Advanced Creative Writing, Contemporary World Affairs, Jazz Ensemble, Studio Art, Modern Band, Wind Ensemble, Theater; Drawing, Painting and Printmaking
- ✱ Award Winning Literary Magazine – “Epoch”
- ✱ School Newspaper – “The Eagle”
- ✱ K-12 Shared Text for Summer Reading
- ✱ Bi-Annual Creative Writing Competition

NEST+m Shared Summer Reading 2016-2019



Author William Kamkwamba visits NEST+m



Literary Magazine Layout and Design



NEST+m Jazz Ensemble



Athletics at NEST+m: PSAL Varsity Sports

Athletic Director, Chad Cinquegrana

- ✱ Basketball – Girls
- ✱ Basketball – Boys
- ✱ Fencing – Girls
- ✱ Fencing – Boys
- ✱ Track and Field
- ✱ Softball – Girls
- ✱ Volleyball – Girls
- ✱ Soccer – Girls
- ✱ Soccer – Boys

Clubs at NEST+m

- ✱ Student Government
- ✱ Cricket Club
- ✱ Peer Leaders
- ✱ APSA (Debate Club)
- ✱ Exploration of the Arts
- ✱ Model United Nations
- ✱ Photography Club
- ✱ LGBTQ+ Club
- ✱ Black Student Union
- ✱ Muslim Student Union
- ✱ Hispanic Culture
- ✱ Investing Club
- ✱ Coding Club
- ✱ Key Club
- ✱ A Capella
- ✱ Safe Space
- ✱ Ping Pong
- ✱ Tabletop Gaming
- ✱ Creative Writing
- ✱ Jazz Combo
- ✱ Ad Club
- ✱ Film Photography
- ✱ Yoga and Meditation
- ✱ Comedy Improv
- ✱ Athletic Clubs
- ✱ ...And Many More!

NEST+m Black Student Union



NEST+m Muslim Student Association



NEST+m Peer Leaders



NEST+m Comedy Troupe



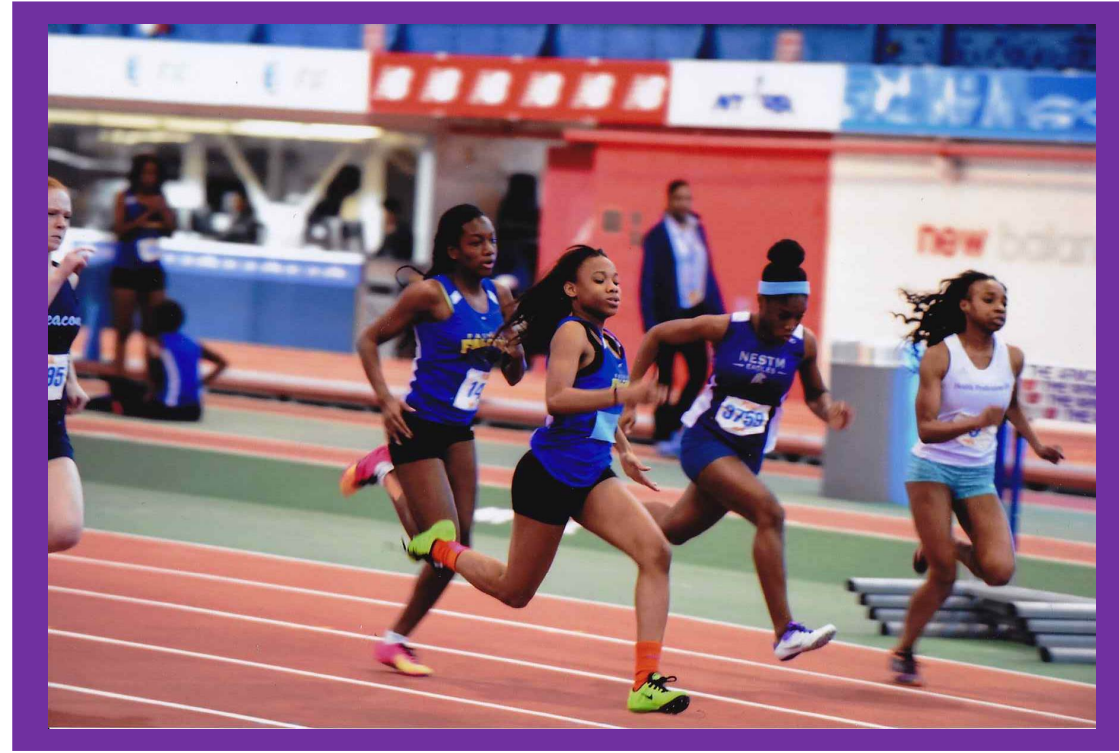
NEST+m Model United Nations Club



NEST+m Girls Basketball



Co-Ed Track and Field



Fencing Team



Girls Softball



Boys Basketball



National Honor Society Induction Ceremony



NEST+m Commencement Ceremony at Cooper Union Great Hall



NESTFest K-12 Student Talent Show



Faculty Talent Show



K-12 School Spirit Days



NEST+m Senior Prom



Frost Valley – Senior Trip



NEST+m Upper Grades – FAQ's

What time does the school day begin and end?

--The school day begins at 8:20am and concludes at 2:40pm

Are students able to go off campus for lunch?

--Students are permitted to eat lunch off campus beginning in the 2nd semester of their freshman year

How do students travel to NEST+m?

--Students travel to NEST+m on public transportation-- the M14D bus or F, J, M, Z subway lines transport students within a close walk to our campus. The NEST+m PTA also runs a private (paid) bussing service that transports students to NEST+m from all over New York City.

Does NEST+m have a college office?

--NEST+m has a dedicated and dynamic college office. Students begin receiving support with the college application process beginning in the 9th Grade. The College Office hosts an annual college fair that draws reps from more than 50 major colleges and universities. There are also numerous college trips and opportunities for current students to interact and learn from NEST+m alumni.

NEST+m Upper Grades – FAQ's

What distinguishes NEST+m Upper Grades from other high school choices?

- NEST+m has a small tightly knit Upper Grades community with approximately 650 students each year
- In our small community, students have easy access to a large number of Advanced Placement classes / electives and are rarely ever blocked from taking the classes they want to take.
- Teachers, counselors, and school administrators know their students by name and enjoy bonding with students during clubs, grade band trips, and field days.
- NEST+m promotes student leadership with student-led clubs, projects, and teams.
- NEST+m students complete 60 hours of community service prior to graduation.

Class of 2019 – College Acceptances

- Adelphi University
- Albany College of Pharmacy and Health Sciences
- Alfred University
- American University
- Bard College
- Baruch College of the CUNY
- Bennington College
- Binghamton University
- Binghamton University (Harpur College of Arts & Sciences)
- Binghamton University (School of Management)
- Boston College
- Boston University
- Boston University (College of General Studies)
- Brandeis University
- Brooklyn College of the CUNY
- Brooklyn College of the CUNY (Macaulay Honors College)
- University of California, Davis (College of Agricultural & Environmental Sciences)
- University of California, Irvine
- University of California, Santa Barbara
- Case Western Reserve University
- University of Chicago
- City College of New York CUNY
- City College of New York CUNY (Division of Science)
- City College of New York CUNY (Macaulay Honors College)
- Clark University
- Colgate University
- Colorado School of Mines
- Columbia University
- University of Connecticut
- Cornell University
- CUNY-Macaulay Honors College
- CUNY-Macaulay Honors College (Baruch College)
- Delaware Valley University
- University of Delaware
- University of Delaware (Honors Program)
- Denison University
- DePaul University
- Drew University
- Drexel University
- University College Dublin
- Elon University
- Emory University

Class of 2019 – College Acceptances

- University of Florida
- Fordham University
- Fordham University (Fordham College at Lincoln Center)
- Fort Valley State University
- Franklin & Marshall College
- The George Washington University
- Georgetown University
- University of Georgia (College of Arts & Sciences)
- Grinnell College
- Hamilton College - NY
- Hofstra University
- College of the Holy Cross
- Hunter College of the CUNY
- Hunter College of the CUNY (Macaulay Honors College)
- University of Illinois at Urbana-Champaign
- Illinois Institute of Technology
- Indiana University at Bloomington
- Jacksonville University
- James Madison University
- John Jay College of Criminal Justice of the CUNY
- Kenyon College
- Lafayette College
- Lehman College of the CUNY
- Lehman College of the CUNY (Macaulay Honors College)
- Long Island University, Brooklyn
- Long Island University, Post
- Marist College
- Marquette University (College of Engineering)
- Massachusetts Institute of Technology
- University of Massachusetts, Amherst
- University of Massachusetts, Amherst (College of Natural Resources & the Environment)
- University of Massachusetts, Amherst (Isenberg School of Management)
- McGill University
- McGill University (Faculty of Arts)
- Medgar Evers College of the CUNY
- Miami University, Oxford
- Michigan State University
- University of Michigan
- Middlebury College
- University of Minnesota, Twin Cities
- University of Missouri Columbia
- Mount Holyoke College

Class of 2019 – College Acceptances

- New York University
- North Carolina State University
- Northeastern University
- Northeastern University (College of Arts, Media and Design)
- Northeastern University (College of Social Sciences and Humanities)
- Northeastern University (D'Amore-McKim School of Business)
- Oberlin College of Arts and Sciences
- Occidental College
- Pace University, New York City
- Pennsylvania State University
- Pennsylvania State University (College of Ag. Sciences)
- University of Pittsburgh
- Pratt Institute
- Princeton University
- Purdue University
- Queens College of the CUNY
- Quinnipiac University
- Reed College
- Rensselaer Polytechnic Institute
- University of Richmond
- Rochester Institute of Technology
- Rochester Institute of Technology (College of Engineering or Science)
- University of Rochester
- Rutgers University - Camden
- Rutgers University-New Brunswick
- University of San Francisco
- Skidmore College
- Smith College
- University of South Carolina
- University of Southern California
- Southern Methodist University
- Spelman College
- Springfield College
- St. Francis College
- St. John's University
- St. Joseph's College - Brooklyn Campus
- State University of New York at New Paltz
- College of Staten Island - CUNY
- Stony Brook University
- Stony Brook University (Honors College)
- Stony Brook University (Scholars for Medicine Program)
- SUNY Albany

Class of 2019 – College Acceptances

- SUNY Alfred State College
- SUNY Buffalo State College
- SUNY College of Environmental Science and Forestry
- SUNY College at Geneseo
- SUNY College at Old Westbury
- SUNY Fredonia
- SUNY Oswego
- SUNY Polytechnic Institute
- Susquehanna University
- Syracuse University (David B. Falk College of Sport and Human Dynamics)
- Temple University
- University of Tennessee, Knoxville
- Texas Christian University
- The Ohio State University
- Trinity University
- Tufts University
- Tuskegee University
- Union College (New York)
- University at Buffalo The State University of New York
- Vanderbilt University
- Vassar College
- University of Vermont
- University of Virginia
- University of Virginia (College of Arts & Sciences)
- University of Washington
- Whitman College
- Williams College
- University of Wisconsin, Madison
- The College of Wooster
- Worcester Polytechnic Institute
- York College of the CUNY
- Yale University

Thank you for touring NEST+m!

If you have any questions, please feel free to contact:

- ✿ Lisa Seale-Cruz: Parent Coordinator
pc@nestmk12.net
- ✿ Greg Farrell: Assistant Principal, Supervisor of Humanities Department
GregoryFarrell@nestmk12.net
- ✿ Keshia Souffrant: Assistant Principal, Supervisor of STEM Department
KeshiaSouffrant@nestmk12.net
- ✿ Tessa Derfner: Assistant Principal, Supervisor of Special Education / ENL: K-12
TessaDerfner@nestmk12.net
- ✿ Stephanie Glickman: Guidance Counselor, Grades 9-12
StephanieGlickman@nestmk12.net
- ✿ Katherine Silva: Guidance Counselor, Grades 9-12
KatherineSilva@nestmk12.net