



Prince George County Public Schools  
**Preparing to Safely Welcome  
More Students Back to Campus**

November 2, 2020





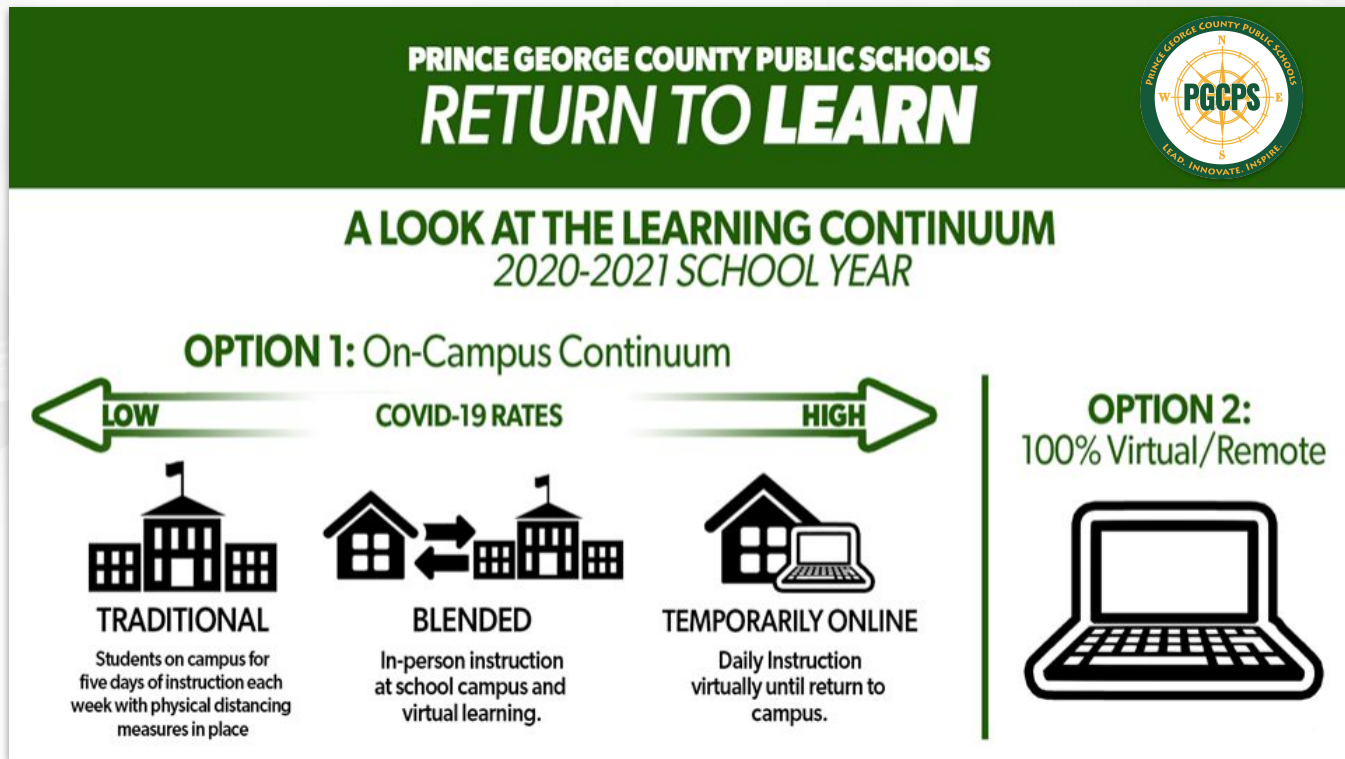
# Our Guiding Principle: Resuming In-Person Instruction Safely

*Prince George County Public Schools wants to welcome as many of our students back to campus for in-person instruction for as many days as we safely can, as quickly as we can.*

- Since Governor Northam released the initial Phase Guidance for Virginia Schools in June, PGCPS has developed and implemented detailed health and instructional plans, which outline strategies for mitigating public health risk of COVID-19 and complying with CDC and VDH recommendations.
- Following a successful reopening on September 8, we began filling open slots for in-person instruction on September 21.
- In October, our enrollment was 6,096, with 2,719 students attending class in-person (45%) and 3,377 students receiving virtual instruction from home (55%). **We currently have 404 students on the waitlist for in-person instruction.**

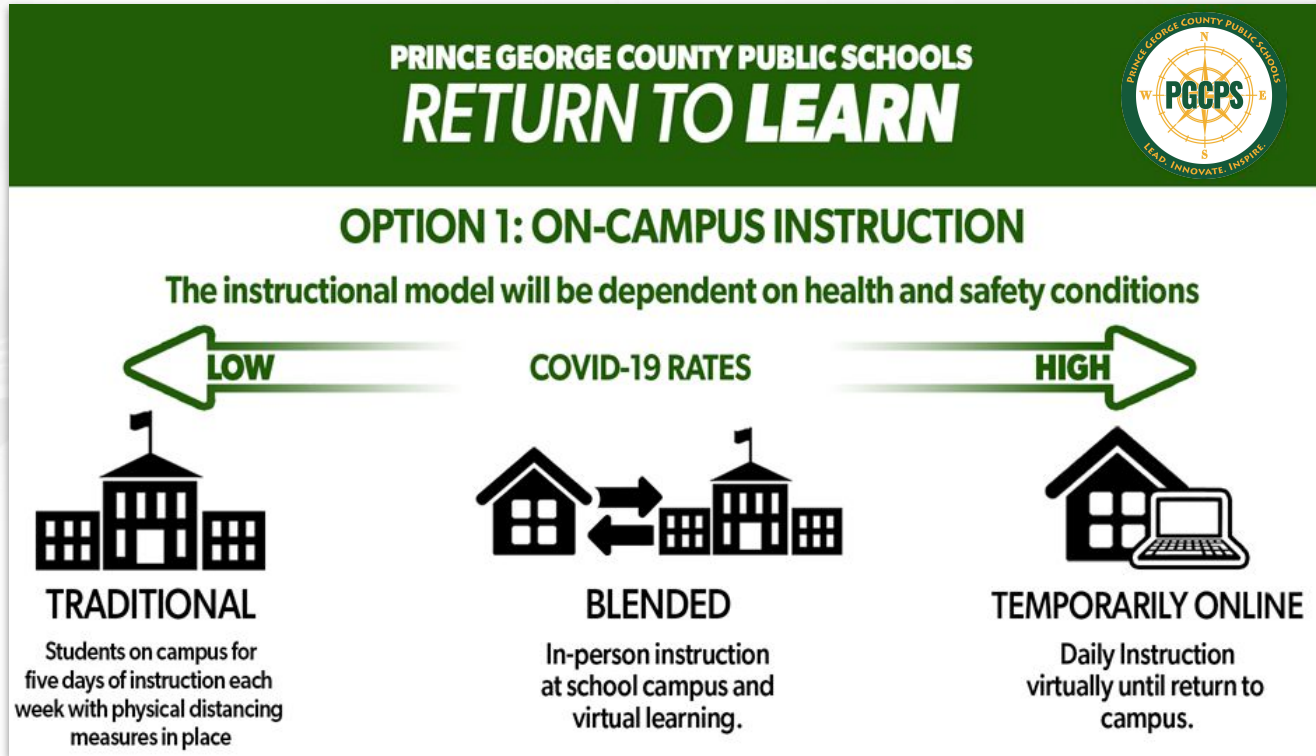


# Return to Learn: A Review of the Learning Continuum





# Return to Learn: Focusing on the On-Campus Continuum





# Return to Learn: Focusing on the On-Campus Continuum

- The school year began with a **blended model of instruction**, featuring in-person learning on campus Monday through Thursday and virtual instruction at home on Fridays.
- On campus, class sizes currently allow students to be physically distanced at six feet apart. Face coverings are highly encouraged and strongly recommended when six feet of physical distance cannot be maintained.
- Virtual instruction on Fridays allow students to receive support and enrichment while learning from home. Live interactions paired with recorded lessons and prepared assignments support the learning experience.
- Additional enrichment and remediation opportunities are available to support students, along with academic interventions, CTE courses with hands-on components, and small practice sessions for band and vocal music.



# Review of Phase Guidance for Virginia Schools

- The Centers for Disease Control and Prevention (CDC) advises individuals maintain **six feet of distance** to reduce the risk of COVID-19 transmission.
- The World Health Organization (WHO) advises schools “maintain a distance of **at least one meter (approx. three feet)** between everyone present at school” while monitoring ongoing research.
- The American Academy of Pediatrics (AAP) notes “spacing **as close as three feet** may have similar benefits if students wear cloth face coverings and do not have symptoms of illness.”

*“In school settings, schools are encouraged to aim for six feet of physical distance to the greatest extent possible; however, if six feet of distance is not feasible (inclusive of buildings and school buses), **schools should implement a combination of face coverings and a minimum of three feet distance between everyone present.**”*

Source: [Phase Guidance for Virginia Schools. July 2020](#)





# American Academy of Pediatrics: Guidance on School Re-Entry

- In a report from the American Academy of Pediatrics published August 19, the organization provides guidance for communities as they create policy for school re-entry during the COVID-19 pandemic.
- In the guidance, the AAP makes the following recommendations:
  - For elementary and secondary schools, they suggest desks be positioned at least three feet apart and six feet when feasible.
  - “If this (six feet physical distance) reduces the amount of time children are present in school, the harm may outweigh potential benefits.”

***“Schools should weigh the benefits of strict adherence to a six-foot spacing rule between students with the potential downside if remote learning is the only alternative.” - AAP***

Source: [COVID-19 Planning Considerations: Guidance for School Re-entry, August 2020](#)

American Academy of Pediatrics, AAP

## American Academy of Pediatrics





# American Academy of Pediatrics: Guidance on School Re-Entry

American Academy of Pediatrics recommendations for adult staff and educators include:

- Universal cloth face coverings
- Particular avoidance of close physical proximity to other adults and children.
- Teachers' desks should be placed 6 feet away from students, if feasible.
- Bus drivers should be a minimum of 6 feet physical distance from students.

## American Academy of Pediatrics



Source: [COVID-19 Planning Considerations: Guidance for School Re-entry. August 2020](#)

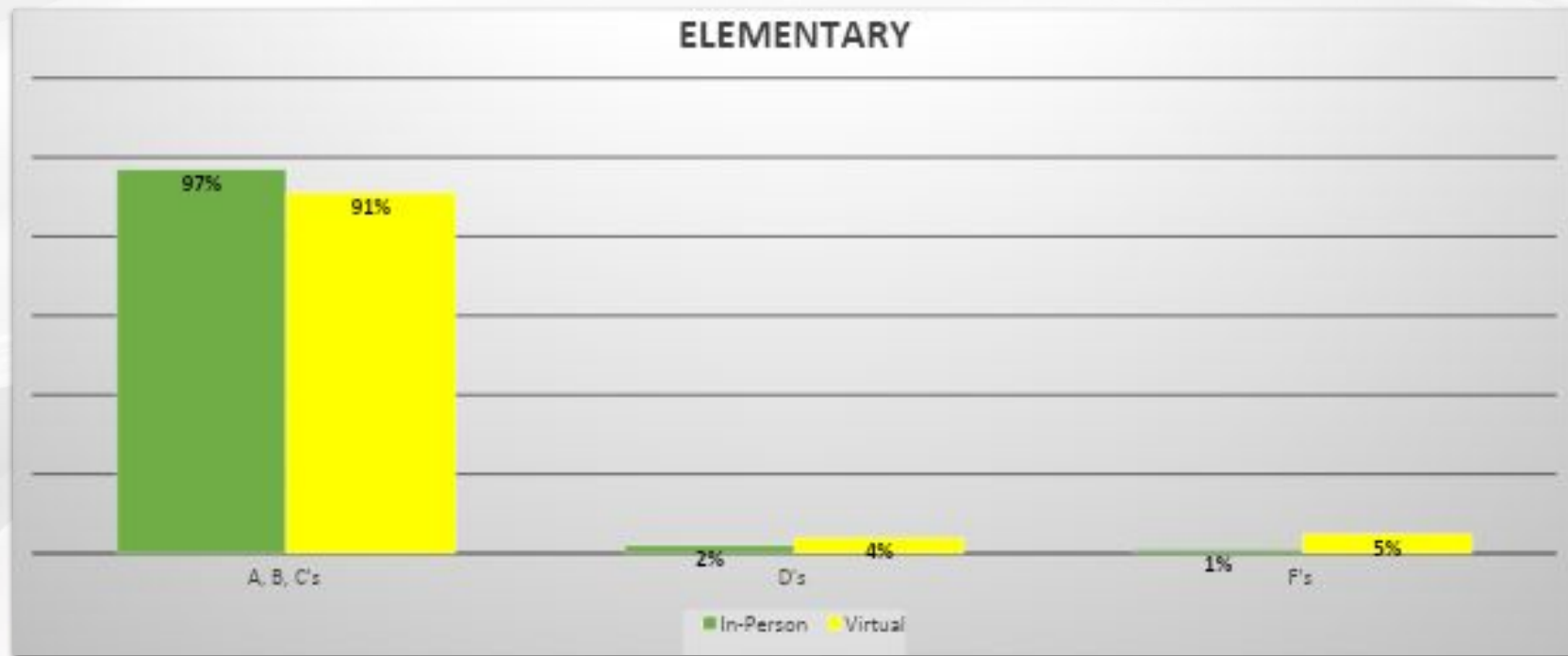
American Academy of Pediatrics, AAP



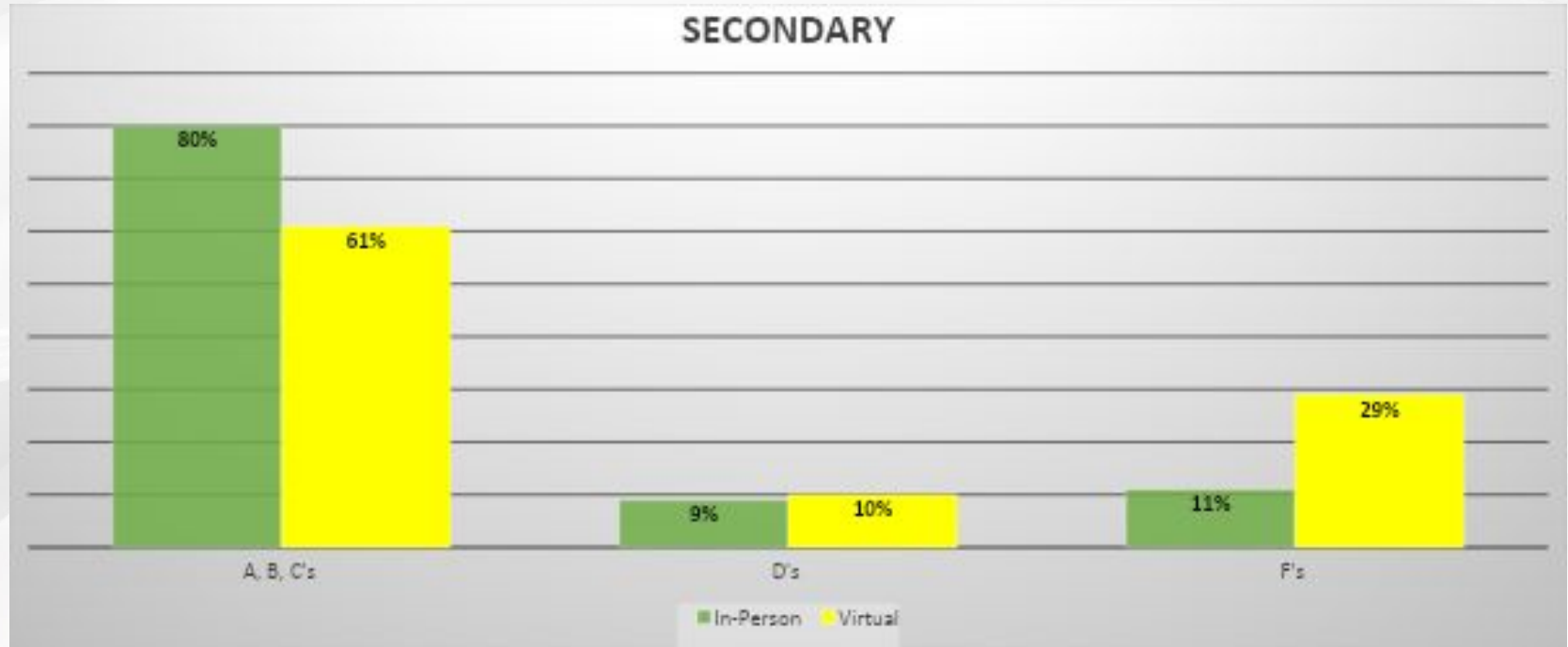


# Achievement Data - First Quarter

## Grade Distribution: Virtual / In-Person Comparison, Language Arts

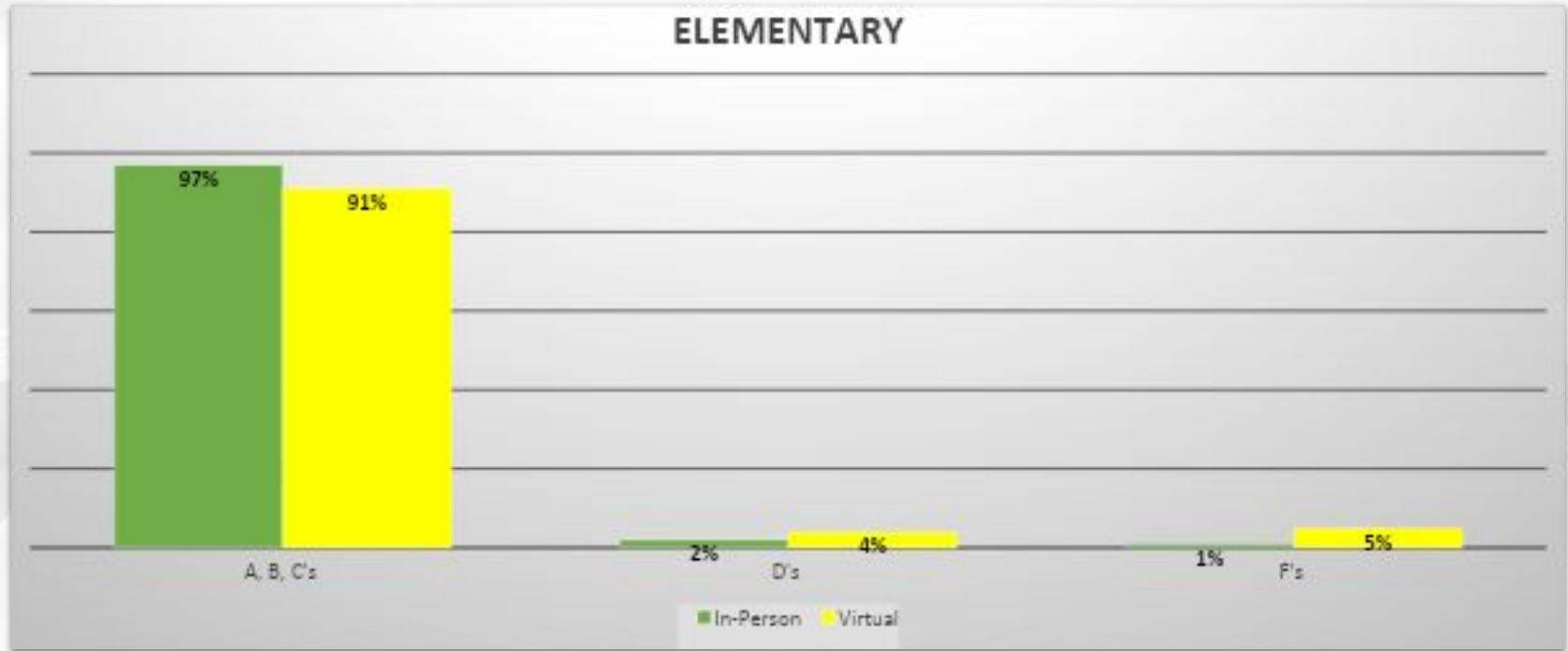


## Grade Distribution: Virtual / In-Person Comparison, English

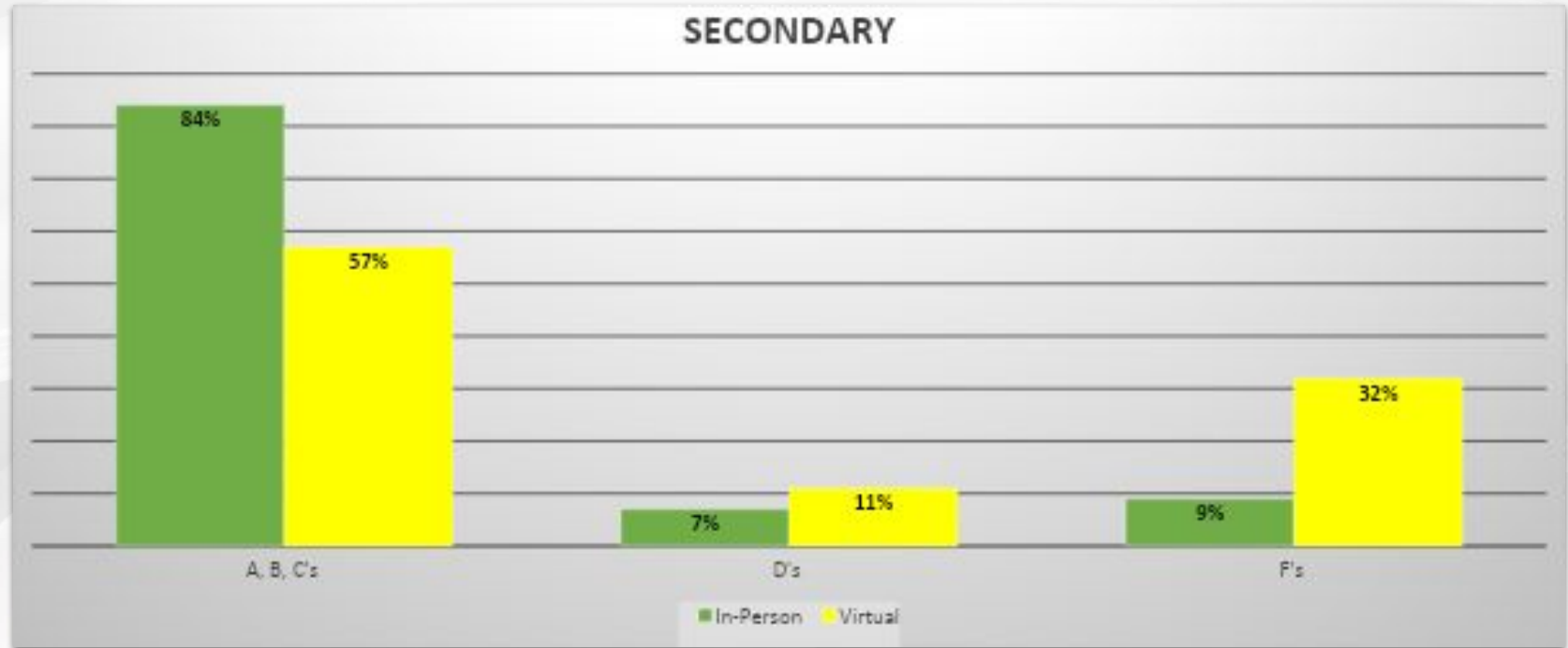




## Grade Distribution: Virtual / In-Person Comparison, Mathematics

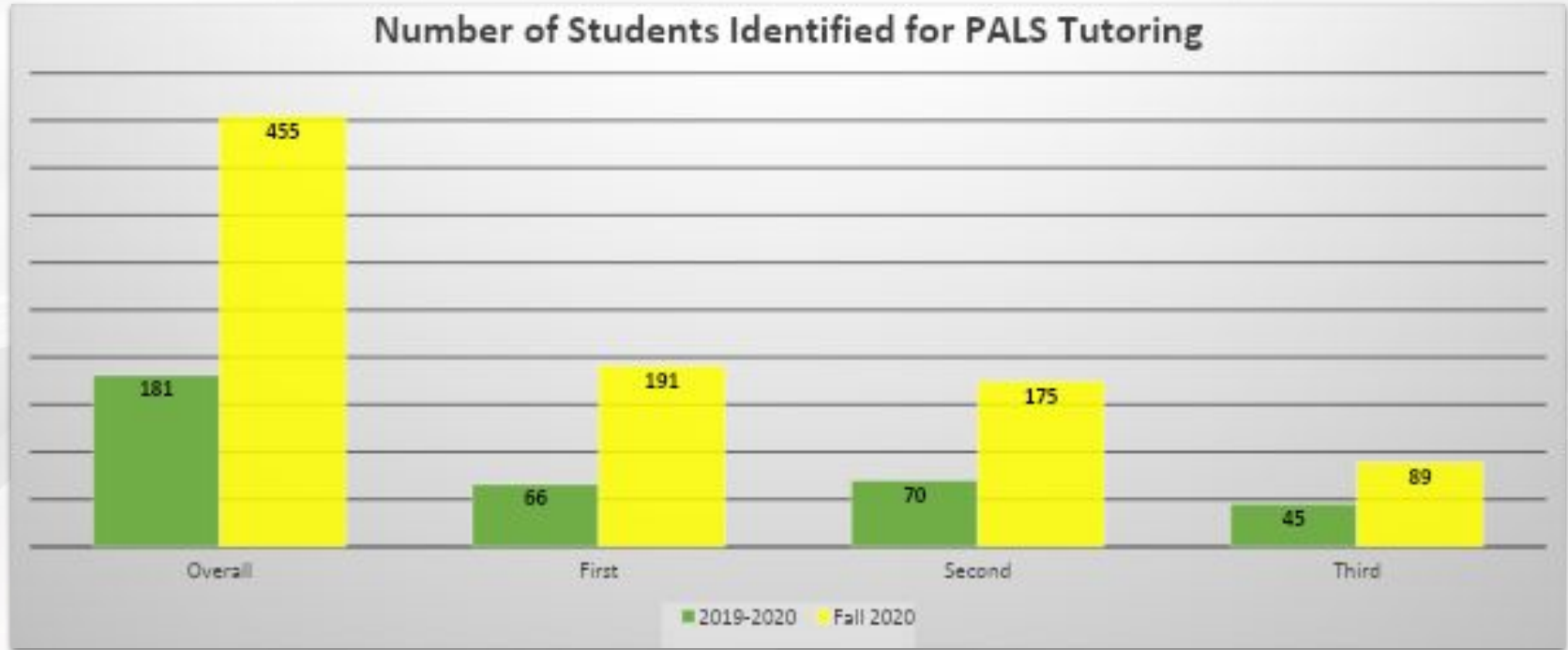


## Grade Distribution: Virtual / In-Person Comparison, Mathematics





# Phonological Awareness Literacy Screening (PALS) 2019-20 School Year vs. Fall 2020







# Prince George County Health Data



# Looking at Prince George County's Health & Our Neighbors

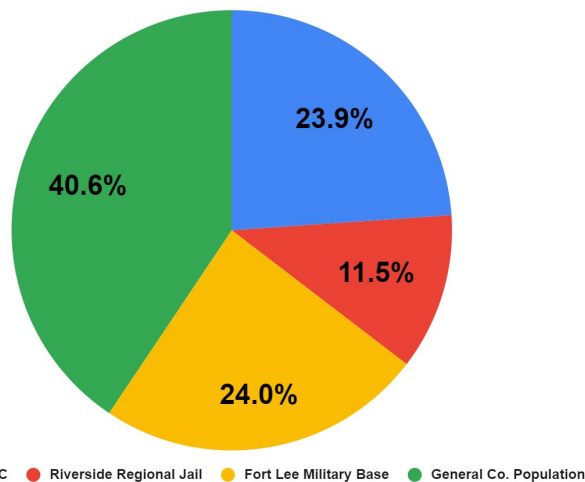
Locality	Population	Cases	Case to % Popul.	Hospitalized	Hospitalized % Popul.	Deaths	Deaths % Popul.
Dinwiddie	28,544	540	1.89%	44	0.15%	12	0.04%
Emporia	22,596	300	1.33%	36	0.16%	28	0.12%
Greensville	31,567	910	2.88%	40	0.13%	15	0.05%
Hopewell	22,596	530	2.35%	39	0.17%	8	0.04%
Petersburg	31,567	956	3.03%	86	0.27%	30	0.10%
<b>Prince George</b>	<b>38,353</b>	<b>1,124</b>	<b>2.93%</b>	<b>26</b>	<b>0.07%</b>	<b>7</b>	<b>0.02%</b>
Surry	6,474	142	2.19%	10	0.15%	5	0.08%
Sussex	11,159	643	5.76%	30	0.27%	13	0.12%
<b>Totals</b>	<b>192,856</b>	<b>5,145</b>	<b>2.67%</b>	<b>311</b>	<b>0.16%</b>	<b>118</b>	<b>0.06%</b>

*\* Health data as of November 2, 2020*

Source: Virginia Department of Health | COVID-19 Daily Dashboard

- Since March, a total of 26 hospitalizations and seven COVID-19-related deaths have been reported in Prince George County by health officials.
- As of Nov. 2, Prince George County has the second lowest hospitalization count and death count within the Crater Health District.
- Prince George has the lowest hospitalizations and deaths by percentage of population in the Crater Health District.
- Crater Health District has no reported COVID-19 deaths in either the 0-9 or 10-19 age demographics.

# Looking at the Health of Our Community



- When looking at the health of our community, it is important to observe key factors in our health data in our community, such as facilities located within Prince George County.
- Prince George has the Petersburg Federal Correctional Complex (FCC), Riverside Regional Jail, and Fort Lee within its borders. Cases from these locations are included in the county's VDH COVID-19 data.
- Cases from these three locations account for nearly 60 percent\* of the county's total number of COVID-19 cases.
- Nearly 450 of the county's over 1,100 case count are among the county's general population, or 40 percent\*.

Location Within Prince George County	Cases
Petersburg Federal Correctional Complex (FCC)	23.9%
Riverside Regional Jail	11.5%
Fort Lee Military Base	24%
General Population of County	40.6%

*\* Health data as of October 26, 2020*



# Comparing Prince George County's Health to its Neighbors

Locality	Population	Cases	Cases % Popul.	Hospitalized	Hospitalized % Popul.	Deaths	Deaths % Popul.
Charles City	6,963	105	1.51%	23	0.33%	5	0.07%
Chesterfield	352,802	7,320	2.07%	426	0.12%	120	0.03%
Colonial Heights	17,883	320	1.79%	29	0.16%	26	0.15%
Dinwiddie	28,544	540	1.89%	44	0.15%	12	0.04%
Goochland	23,753	340	1.43%	31	0.13%	7	0.03%
Hanover	107,766	1,736	1.61%	130	0.12%	44	0.04%
Henrico	330,818	6,569	1.99%	498	0.15%	240	0.07%
Hopewell	22,596	530	2.35%	39	0.17%	8	0.04%
New Kent	23,091	302	1.31%	16	0.07%	3	0.01%
Petersburg	31,567	956	3.03%	86	0.27%	30	0.10%
Powhatan	29,652	324	1.09%	21	0.07%	5	0.02%
<b>Prince George</b>	<b>38,353</b>	<b>1,124</b>	<b>2.93%</b>	<b>26</b>	<b>0.07%</b>	<b>7</b>	<b>0.02%</b>
Richmond City	288,783	5,499	1.90%	458	0.16%	78	0.03%
Surry	6,474	142	2.19%	10	0.15%	5	0.08%
Sussex	11,159	643	5.76%	30	0.27%	13	0.12%
<b>Totals</b>	<b>1,320,204</b>	<b>26,450</b>	<b>2.00%</b>	<b>1,867</b>	<b>0.14%</b>	<b>603</b>	<b>0.05%</b>

- As we move to welcome more students back to campus, being cognizant of our neighboring communities and their health is important in shaping the decisions we make locally.
- This chart provides the number of cases, hospitalizations, deaths, and local population of all communities with the Virginia Department of Education's Region 1, including Prince George.
- Prince George County continues to have one of the lowest hospitalization and death counts for the size of our population among Region 1 localities.

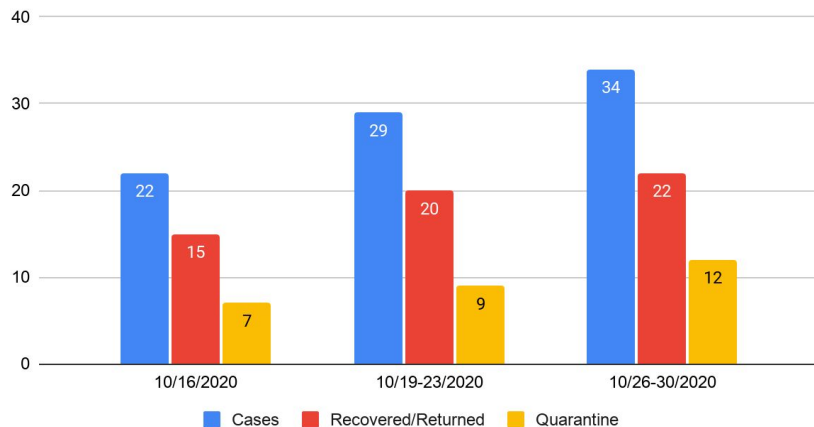
*\* Health data as of November 2, 2020*

Source: Virginia Department of Health  
COVID-19 Daily Dashboard



# Looking at the Health of Our School Community

PGCPS COVID-19 Health Data



- As of the Week of Oct. 26 - 30, 2020, Prince George County Public Schools reported a total of 34 cases of COVID-19.
- Of those 34, 22 have recovered and have returned to campus. 12 remain quarantined as required by the Virginia Department of Health & our Health Mitigation Plan until completing their recovery.
- The total number of cases reported by PGCPS (34) accounts for **less than one percent of the approximately 4,000 combined students and employees on campus** at our schools and support buildings.
  - Over 2,700 In-Person Students
  - Over 1,200 full- and part-time employees

Prince George County Public Schools COVID-19 Health Data

Week Of	Cases	Recovered/Returned	Quarantined
10/16-20/2020	22	15	7
10/19-23/2020	29	20	9
10/26-30/2020	34	22	12



## Planning for PGCPS' Second Semester

- As we consider student achievement and the health of our community in making our plans for second semester, we remain committed to bringing as many children as we safely can back to campus.
- During the second semester, we will aim for six feet of physical distance to the greatest extent possible; however, if six feet of distance is not feasible, we will implement a combination of face coverings and a minimum of three feet distance between everyone present.
- This will allow us to be able to welcome more students back to campus, including those students who are facing challenges in virtual instruction and other priority groups within our school community.





## Preparations for PGCPS' Second Semester

- Beginning November 9, 2020, families will be able to make their instructional choice for the second semester. Second semester for students begins February 2, 2021. The instructional options are as follows:
  - In-Person: **Currently** 4 days per week with 1 day of virtual/remote learning **OR**
  - 100% Virtual-Remote Instruction
- Families of students learning virtually will be asked if they wish to remain on virtual or switch to in-person for the second semester. They will also be asked about their transportation needs, if they ***Prefer*** or ***Must Have*** bus transportation.
- Families of students currently learning on-campus who want to continue in-person instruction during the second semester will be asked if they wish to remain in-person or switch to virtual for the second semester. In-person families will also be given the opportunity to notify us if they need to update their Transportation response to ***Preferred*** or ***Must Have***.



# Implementing Adjusted Physical Distancing Guidelines on Buses

- **Effective November 30, 2020**, children traveling to and from school on buses will be able to sit one-to-a-seat. Students will be staggered by aisles and windows.
  - Face coverings will be **REQUIRED** while traveling on the bus.
  - The requirement will be enforced as part of PGCPS' Dress Code Policy. Students in violation of the dress code will be required to meet the established expectations or they will be sent home.
- At this time, classrooms will continue to be physically distanced at six feet.
  - Face coverings **will not** be required at this time when students are seated at their desks. The coverings would remain **highly encouraged and strongly recommended** when moving through the building.



# New HEPA Filtration Systems Installed On PGCPS School Buses

- PGCPS' school bus fleet has been outfitted with state-of-the-art Webasto air filtration systems as another measure of protection for our students and bus drivers.
- The units use high-efficiency particulate air (HEPA) technology to remove 99.995 percent of airborne infections and particles.
- 70 percent of PGCPS' school bus fleet has already been outfitted with the Webasto units, with all of the school division's buses slated to have their units installed and operational in early November.
- The systems were purchased with Coronavirus Aid, Relief, and Economic Security (CARES) Act funds at a cost of \$59,960.

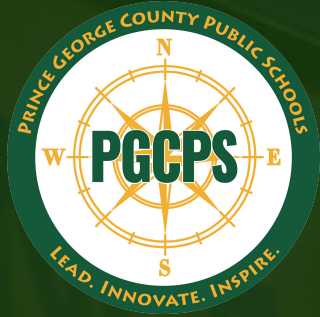




# The Royal Pledge: Committed to Keeping Our Community Healthy

- As we look to welcome more students back to campus for instruction, our commitment to protecting the health and safety of our school community remains unchanged.
- We encourage students and employees to take the Royal Pledge, pledging to work together to slow the spread of COVID-19 in order to stay together.
- The Royal Pledge encourages healthy behaviors aimed at keeping students and staff both physically and emotionally strong.





Prince George County Public Schools  
**Preparing to Safely Welcome  
More Students Back to Campus**

November 2, 2020

