

PLANNING FOR REOPENING



PORT CHESTER PUBLIC SCHOOLS
*TRANSITIONING TO FULL IN-PERSON
INSTRUCTION-SPRING 2021*

REOPENING SCHOOLS TO FULL IN-PERSON INSTRUCTION

Port Chester Public Schools stand committed to provide the circumstances that will allow us to invite all students back to in-person instruction as soon as it is safe enough to do so.

Port Chester Public Schools' leadership team is working on alternative plans for the safe re-opening of our schools this spring.

MOTIVATING FACTORS FOR REOPENING TO FULL IN-PERSON INSTRUCTION

- **Vaccine availability**
- **Decrease in positivity rate**
- **Lost instructional time**
- **Exasperation over the duration of the pandemic**
- **New CDC Guidance and Interim Guidance from the NYSDOH**

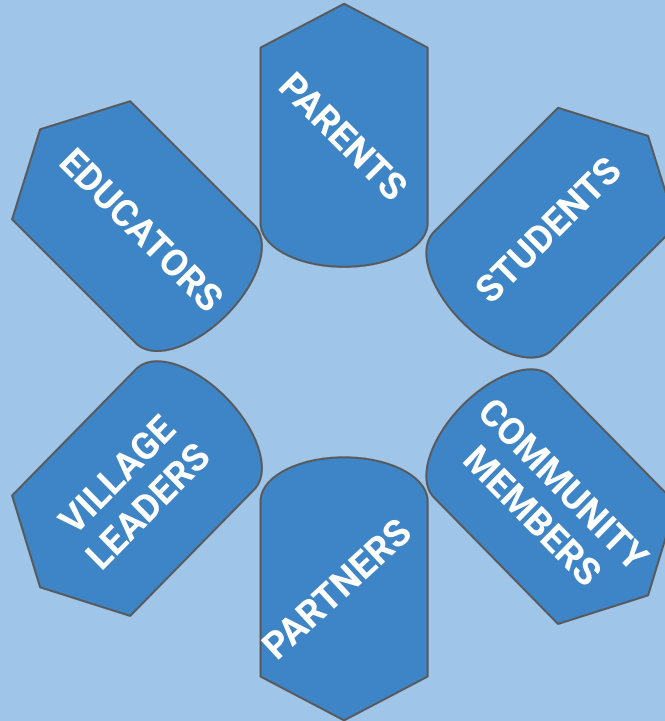
CHALLENGES TO REOPENING TO FULL IN-PERSON INSTRUCTION

- **Vaccine availability**
- **Not aligned and sometimes outright contradictory guidance from authorities** (New York State Department of Health, New York State Education Department, Westchester Department of Health, the Center for Disease Control)
- **Unsettled science on social distancing**
- **Providing quality education to all students**

STAKEHOLDERS TO KEEP IN MIND

Parents and Parent Organizations (PTA/PTO/PTSA)

Faculty (PCTA)
Staff (CSEA)
Administrators (PCSASA)



Kindergarten through
Twelfth Grade

Village Officials
Police Officials

Interested Community
Members

Open Door
Carver Center
Family Services of Westchester
Whitson's Culinary Group
Transportation Vendors

Guiding Principles of the District's Reopening Plan

- 1** The safety and wellness of the school community (students, faculty, staff, administration, partners)
- 2** High quality instruction to students, regardless of the mode of instruction

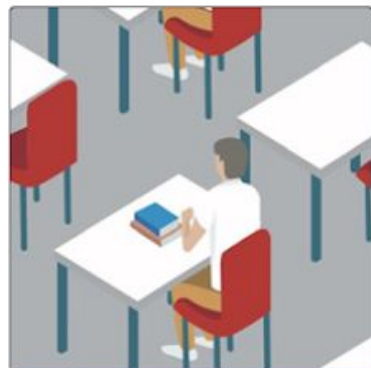
Continued Emphasis on a Safe Learning Environment

The district's number one priority is a safe learning environment that protects both the student's health and wellness as well as allowing them to effectively learn.

Continued Emphasis on a Safe Learning Environment



Daily Health Screenings
and Temperature Checks

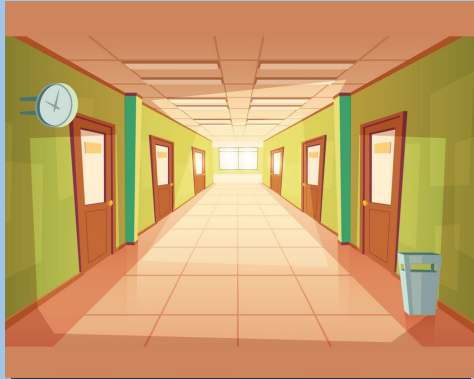


Reduced and
Socially-distanced
Classroom Seating



Social Distancing in
Hallways and Stairwells

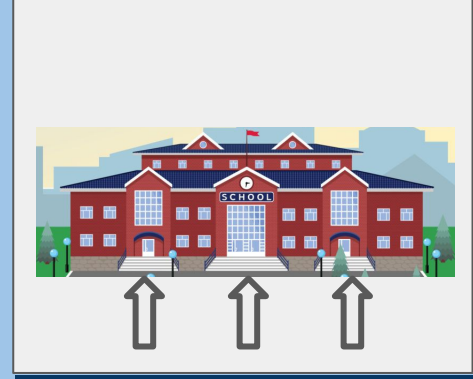
Continued Emphasis on a Safe Learning Environment



Where Possible, Fewer Classroom Changes

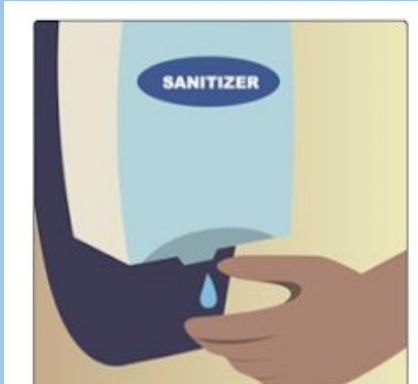


Signage to Promote Health and Safety



Multiple Points of Entry to Minimize Congestion

Continued Emphasis on a Safe Learning Environment



Sanitation Stations
Throughout the Building



Avoiding the Sharing of
Equipment and Supplies



Increased Cleaning and
Sanitation

Continued Emphasis on a Safe Learning Environment



Face Masks



Face Shields

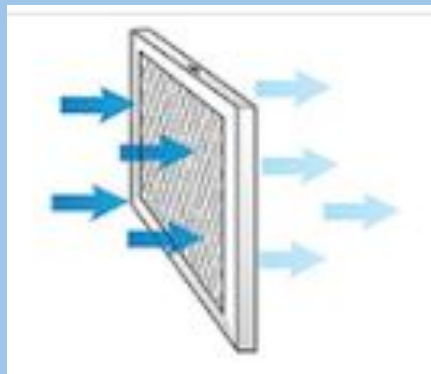


Transparent Shields



Nitrile Gloves

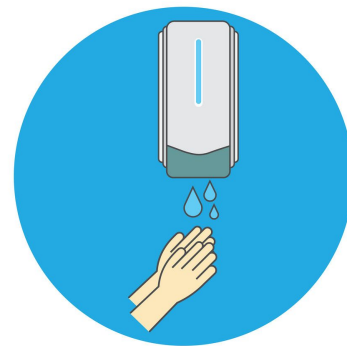
Continued Emphasis on a Safe Learning Environment



Increased Air Filtration to Meet Required Standards



Disinfecting Equipment and Supplies



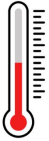
Sanitizer Dispensers and Refills On-hand

Health and Safety Overview



Health Questionnaire

Health questionnaire for employees and students.



Temperature Screening

Upon entrance into PC Schools, everyone will have his/her temperature checked on a daily basis.



Limited Access

Access to schools will as much as possible be limited to only students and employees.



Social Distancing

There will be increased spacing in each building and in classrooms, with fewer students in spaces. Classroom layouts and arrival and dismissal procedures will be modified to maintain social distancing.



Face Coverings

Face coverings will be required and provided as needed to students and employees.



Cleaning

Frequent cleaning of all schools.



Hand Sanitizer

Hand sanitizer will be provided, with hand sanitizing stations at building entrances, in classrooms, and in shared spaces.



Hand-Washing

Hand-washing will be encouraged throughout the day.



Devices

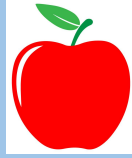
PC Schools will continue to provide Chromebooks and other devices to students as needs are identified.

Health and Safety Overview



Training

Students and employees will receive training on COVID-19 prevention practices, including social distancing and face covering use. Signage and ongoing communication will supplement and reinforce the training.



Food Services

Food distribution will be available to students who are in school and to those eligible for nutrition assistance who are studying remotely. Hand-washing will be encouraged, surfaces will be frequently cleaned and disinfected, and food-sharing will be prohibited.



Transportation

Transportation providers for PC Schools will limit the capacity of students on all buses, in accordance with current public health guidelines. Face masks will be provided to those who lack them.

CLASSROOM INSTRUCTIONAL ENVIRONMENT

- Because of mandated six-foot social distancing, DOH and NYSED guidance made fully in-person learning impossible to accomplish given district enrollment and space limitations until recent CDC guidance suggested the possibility of a lower standard of three feet for social distancing if physical, transparent barriers were in place along with appropriate ventilation and face masks.
- Other non-negotiables:
 - students grouped/cohorted to minimize exposure and allow for easier contact tracing.
 - hand-washing/hand-sanitizing during the day.
 - removal of non-essential shared items from classrooms.
 - use of digital resources for instruction.
 - appropriate personal protective equipment.

CLASSROOM INSTRUCTIONAL MODELS

This year, we knew that we'd have to prepare for different instructional models: Remote Learning and Hybrid Learning.

We knew that we'd have to prepare to transition students and faculty/staff between models as required, with changing conditions and the guidance of health care experts.

We preserved in-person instruction whenever possible and provided a remote learning option as required.

We pivoted with agility to remote learning during school closures.

We eyed the day when we could eventually return to full in-person learning.

NEXT STEPS

A decision to return to the opportunity for full in-person learning means the following:

- **We educate the public on what the two options will be at the Elementary Level:**
 - **A commitment to Remote Learning for the remainder of the school year, or**
 - **Returning to Full In-Person Learning.**
- **We attempt at the Secondary Level to return as many students as possible to Full In-Person Learning, and still provide the option of Remote Learning for those who seek it.**
- **We acquire the necessary polycarbonate desk dividers and related PPE to meet the minimum standards set by the New York State Department of Health.**
- **We survey parents and require them to make an educated commitment for the remainder of the school year regarding a model for their children.**
- **We remain flexible to be able to return to full-remote learning if necessary.**

2020-21 CLASSROOM INSTRUCTIONAL OPTIONS



REMOTE LEARNING



REMOTE LEARNING

HYBRID LEARNING



IN-PERSON LEARNING

IN-PERSON LEARNING



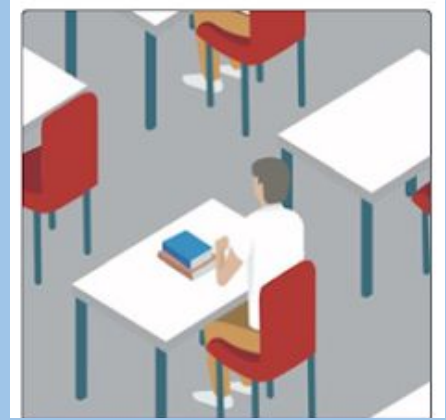
REMOTE LEARNING

- Students attend school remotely.
- Attendance is taken daily by teachers.
- Students follow a schedule, and classes meet at designated times online.
- Students are provided substantively similar opportunities to traditional instruction.
- Remote tele-health and tele-therapy options are available.
- Teachers meet with students daily utilizing Google Classroom and its Meet tool.
- Synchronous learning is a goal for remote instructional days.
- Some instruction is provided asynchronously as needed because of circumstances.



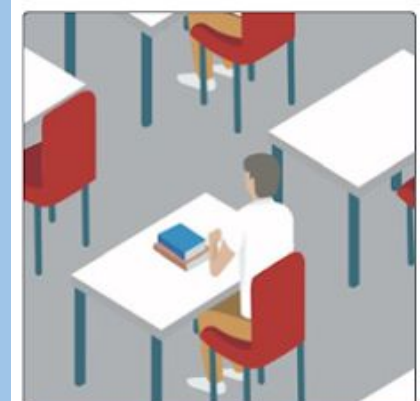
HYBRID LEARNING

- Students attend school in person on some days and remotely on others.
- Class sizes are reduced as a result.
- Attendance is taken daily whether students are in school or at home.
- Schools implement social distancing measures to meet established thresholds wherever possible.
- Masks are required.
- Students attending school in person do so during regular school hours and follow a standard school schedule, which may be adjusted from the traditional schedule.
- Students attending school remotely will be provided substantively similar opportunities to students in school.
- Remote tele-health and tele-therapy options will be available.
- Teachers meet with students daily utilizing Google Classroom and its Meet tool.
- Synchronous learning is a goal for remote instructional days.
- Some instruction is provided asynchronously as needed because of circumstances.



IN-PERSON LEARNING

- Students attend school in person daily.
- Class sizes will be reduced as a result of some students' parents choosing remote instruction.
- Attendance is taken daily.
- Schools implement social distancing measures to meet established thresholds wherever possible.
- Masks will be required.
- Students attending school in person do so during regular school hours and follow a standard school schedule, which may be adjusted from the traditional schedule.
- Synchronous learning happens for all students in attendance.



CLASSROOM INSTRUCTIONAL OPTIONS

As of April 8, 2021



REMOTE LEARNING

OR

IN-PERSON LEARNING



PLANNING FOR REOPENING



PORT CHESTER PUBLIC SCHOOLS
*TRANSITIONING TO FULL IN-PERSON
INSTRUCTION-SPRING 2021*