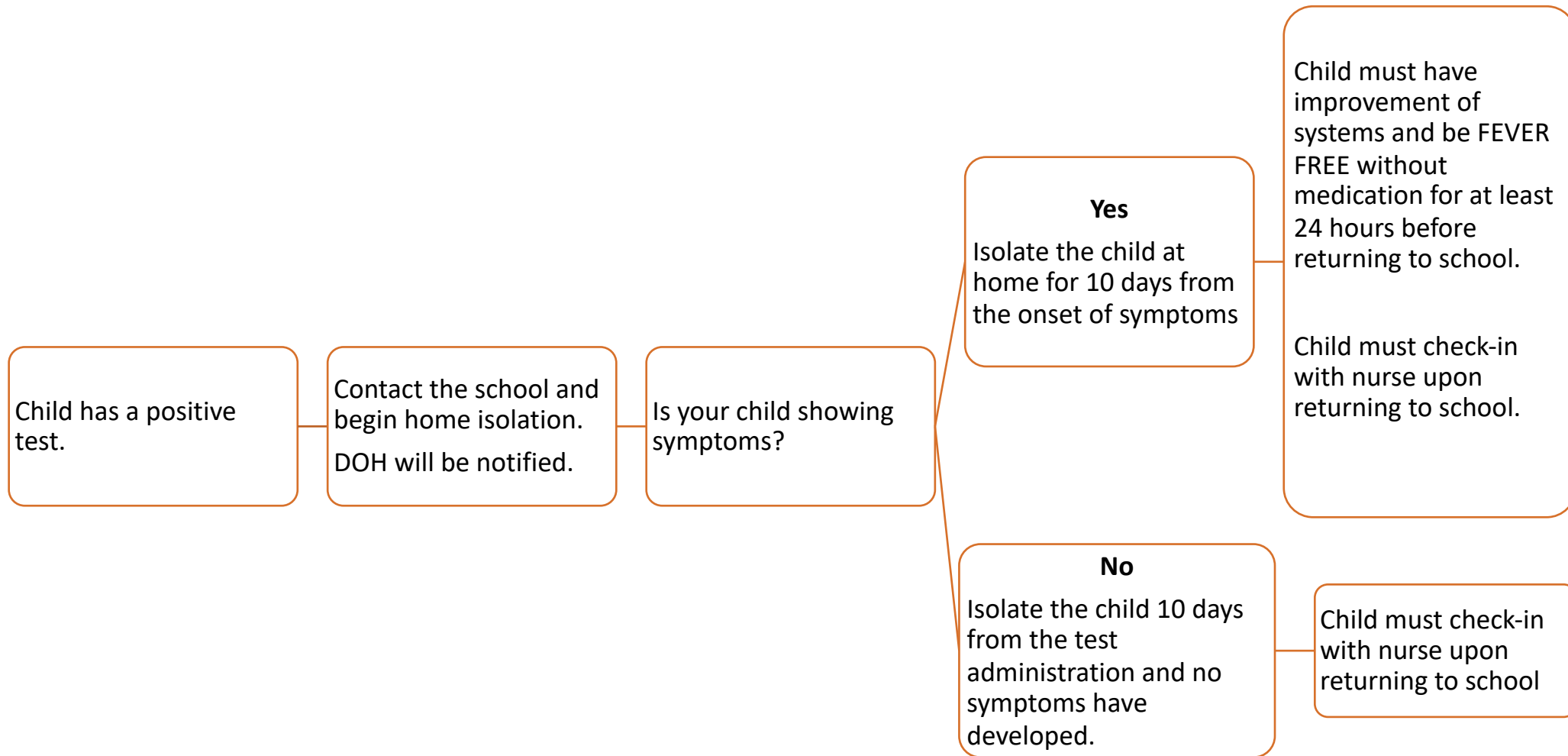


COVID – 19 Decision Making Guide: Positive Test Results

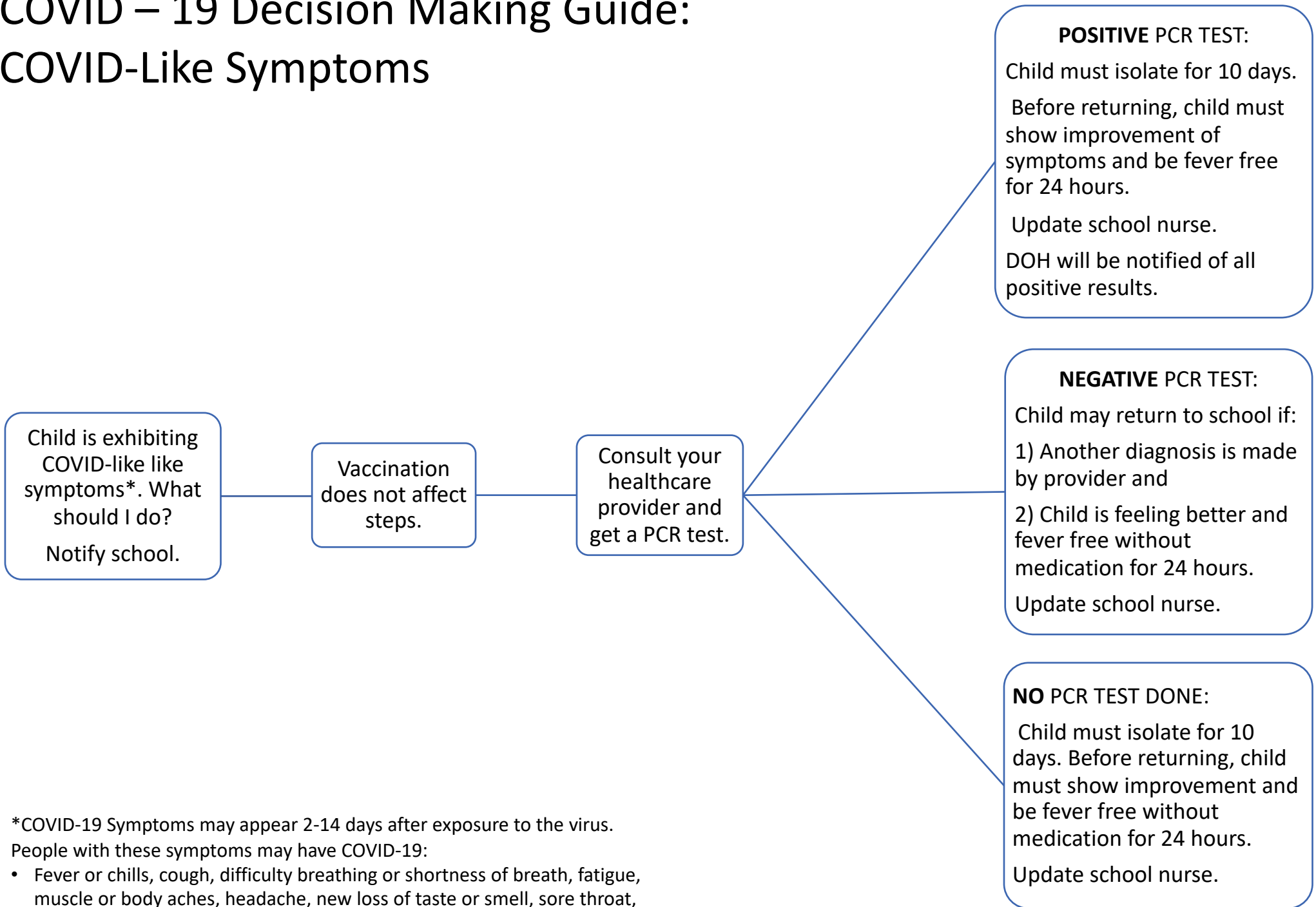


COVID-19 Symptoms may appear 2-14 days after exposure to the virus.

People with these symptoms may have COVID-19:

- Fever or chills, cough, difficulty breathing or shortness of breath, fatigue, muscle or body aches, headache, new loss of taste or smell, sore throat, congestion or runny nose, nausea, vomiting, diarrhea

COVID – 19 Decision Making Guide: COVID-Like Symptoms



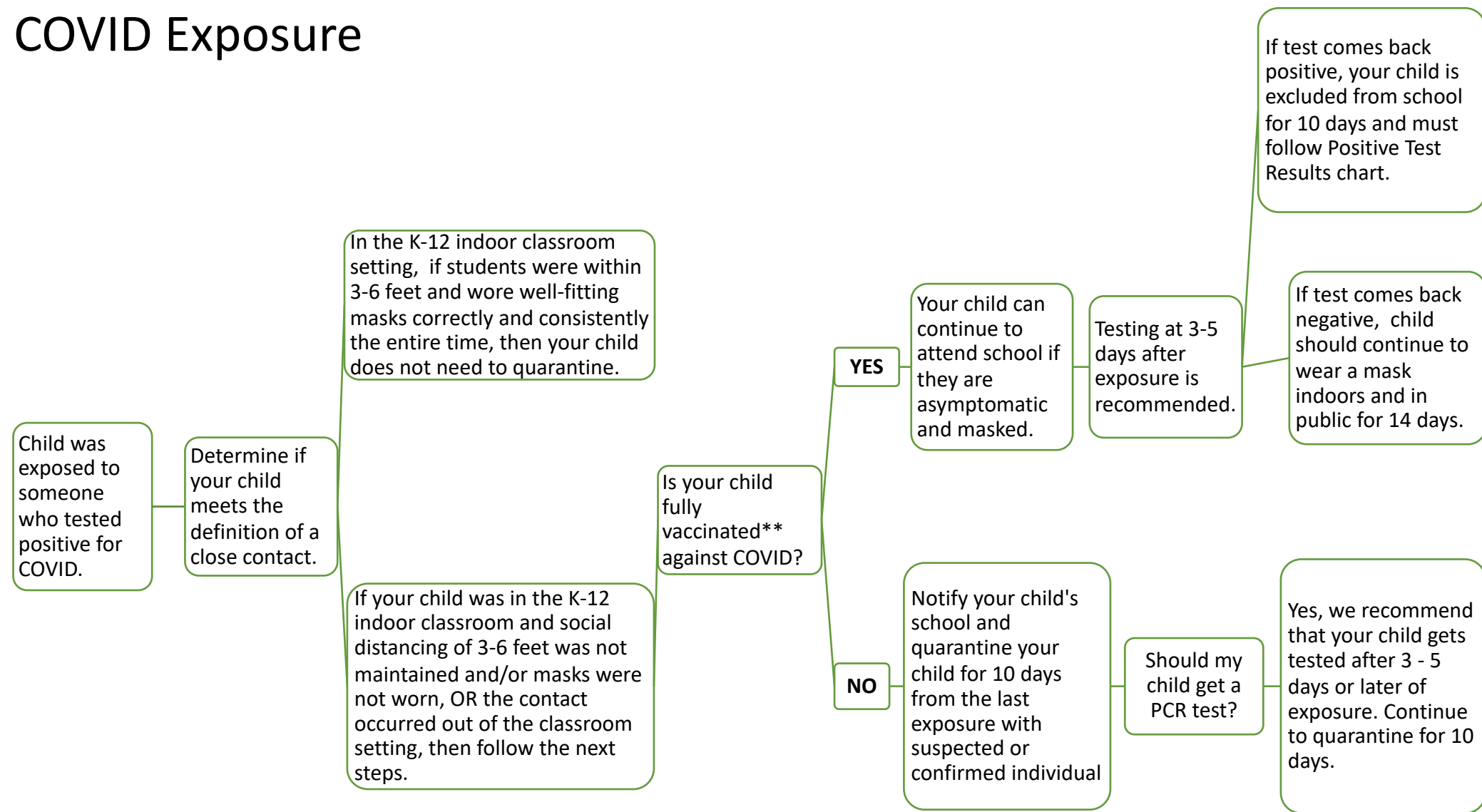
*COVID-19 Symptoms may appear 2-14 days after exposure to the virus.

People with these symptoms may have COVID-19:

- Fever or chills, cough, difficulty breathing or shortness of breath, fatigue, muscle or body aches, headache, new loss of taste or smell, sore throat, congestion or runny nose, nausea, vomiting, diarrhea

COVID – 19 Decision Making Guide:

COVID Exposure



COVID-19 Symptoms may appear 2-14 days after exposure to the virus.

People with these symptoms may have COVID-19:

- Fever or chills, cough, difficulty breathing or shortness of breath, fatigue, muscle or body aches, headache, new loss of taste or smell, sore throat, congestion or runny nose, nausea, vomiting, diarrhea

** Definition of “fully vaccinated”:

- 2 weeks after a second dose of Pfizer or Moderna vaccine.
- 2 weeks after a single dose of Johnson & Johnson vaccine.

What type of contact requires quarantine?

DO I NEED TO QUARANTINE?

A quick reference guide

	CLOSE CONTACT	PROXIMATE CONTACT
VACCINATED INDIVIDUALS		
MASKED	NO	NO
UNMASKED	NO	NO
UNVACCINATED ADULTS		
MASKED	YES	NO
UNMASKED	YES	YES
UNVACCINATED STUDENTS		
MASKED	NO	NO
UNMASKED	YES	YES
INDIVIDUALS WITH COVID IN LAST 90 DAYS		
MASKED	NO	NO
UNMASKED	NO	NO

Westchester County
Dept. of Health guidelines

as of 9/1/21



Close Contact:
being closer than 3ft
(children) or 6ft (adults)
for more than 15
minutes cumulatively
over 24 hours.

Proximate Contact:
sharing the same room
(enclosed space) for more
than 15 minutes cumulatively
over 24 hours.