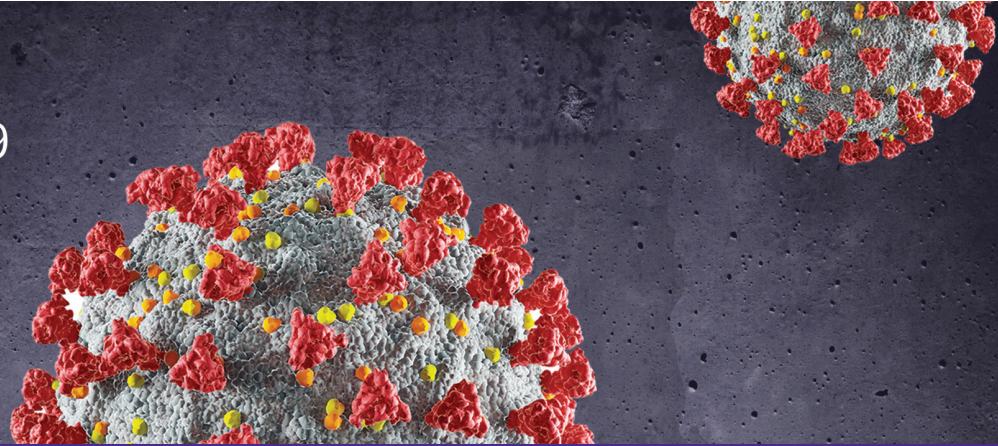




Department
of Health

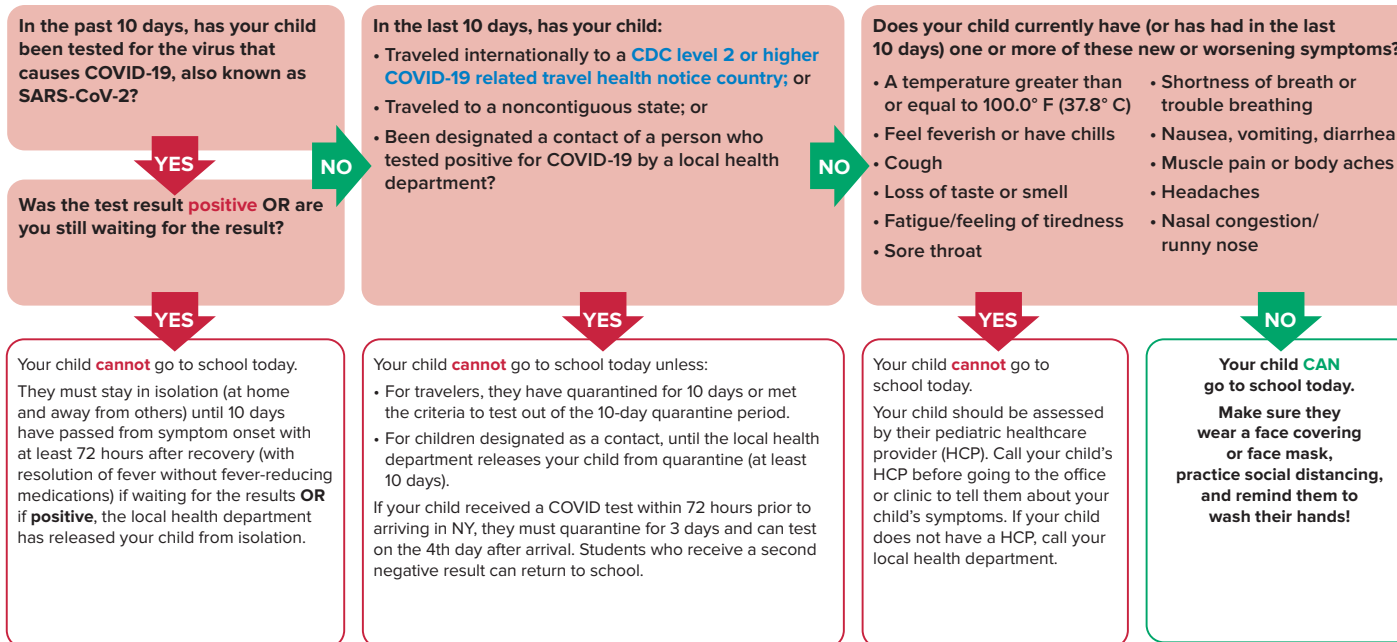
NYSDOH COVID-19



Pre-K to Gr 12 COVID-19 Toolkit

NYSDOH COVID-19 In-Person Decision Making Flowchart for Student Attendance

Can My Child Go To School Today?



Report absences, symptoms, and positive COVID-19 test results to your child's school.

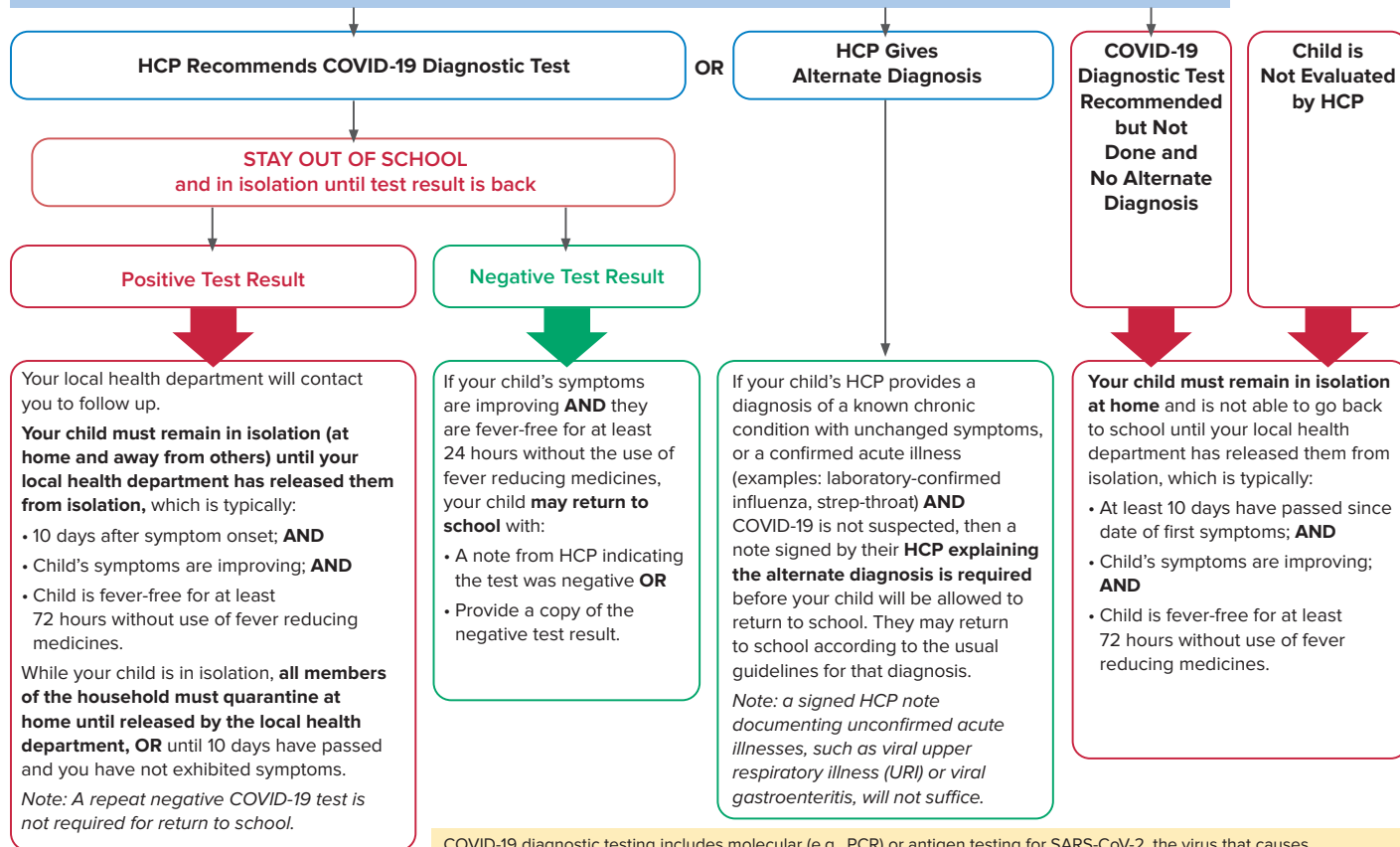
SEEK IMMEDIATE MEDICAL CARE IF YOUR CHILD HAS:

- Trouble breathing or is breathing very quickly
- Prolonged fever
- Is too sick to drink fluids
- Severe abdominal pain, diarrhea or vomiting
- Change in skin color - becoming pale, patchy and/or blue
- Racing heart or chest pain
- Decreased urine output
- Lethargy, irritability, or confusion



My child has COVID-19 symptoms. When can they go back to school?

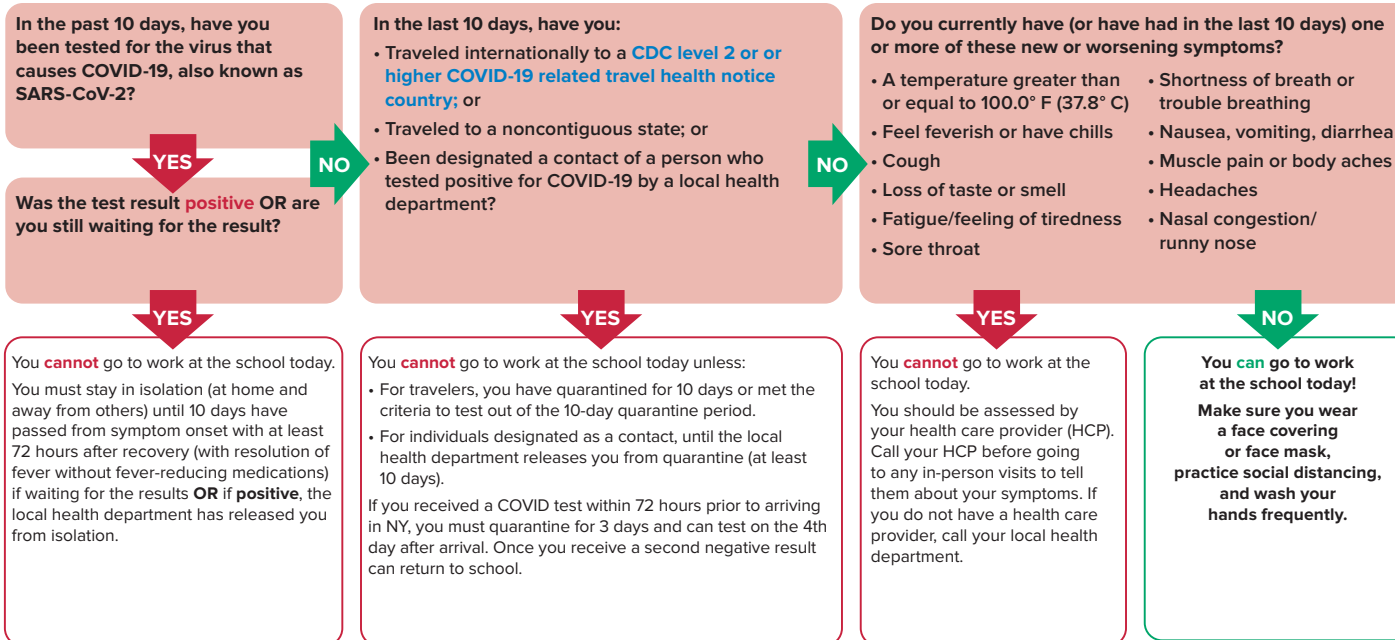
HEALTHCARE PROVIDER (HCP) EVALUATION FOR COVID-19 (can be in-person or by video/telephone as determined by HCP)



COVID-19 diagnostic testing includes molecular (e.g., PCR) or antigen testing for SARS-CoV-2, the virus that causes COVID-19. Diagnostic testing may be performed with a nasopharyngeal swab, nasal swab, or saliva sample, as ordered by the health care provider and per laboratory specifications. At times, a negative antigen test will need to be followed up with a confirmatory molecular test. Serology (antibody testing) cannot be used to rule in or out acute COVID-19.

NYSDOH COVID-19 In-Person Decision Making Flowsheet for Staff To Go To Work

Can I Go to Work at the School Today?



Report absences, symptoms, and positive COVID-19 test results to your school.

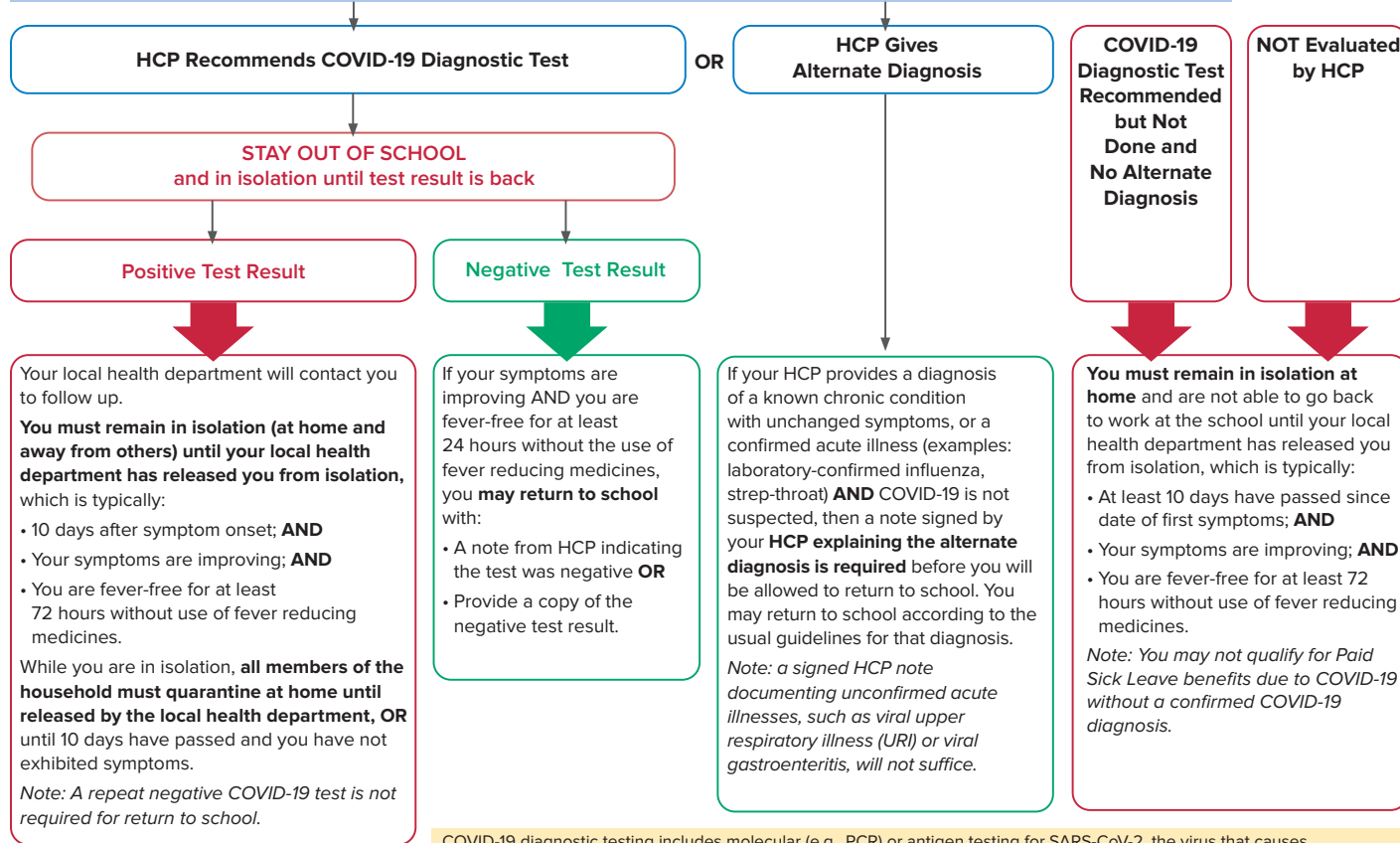
SEEK IMMEDIATE MEDICAL CARE IF YOU HAVE:

- Trouble breathing or are breathing very quickly
- Are too sick to drink fluids
- Severe abdominal pain, diarrhea or vomiting
- Change in skin color - becoming pale, patchy and/or blue
- Racing heart or chest pain
- Decreased urine output
- Lethargy, irritability, or confusion



I have COVID-19 symptoms. When can I go back to work at the school?

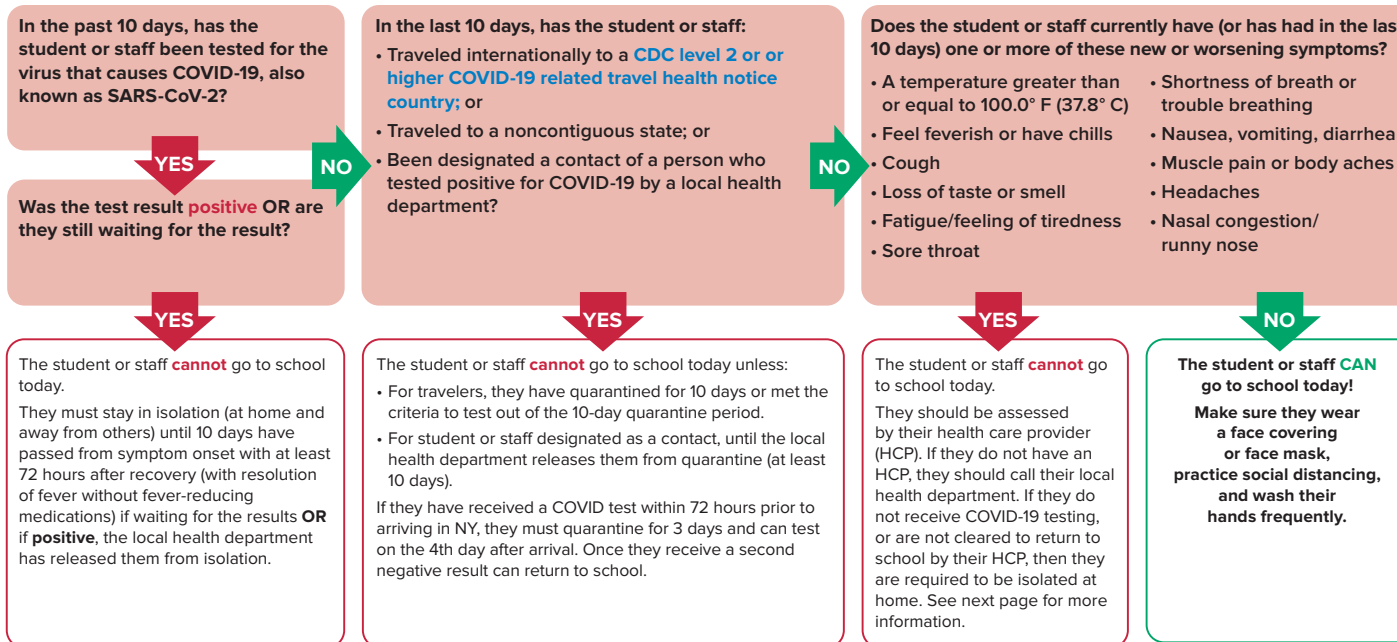
HEALTHCARE PROVIDER (HCP) EVALUATION FOR COVID-19 (can be in-person or by video/telephone as determined by HCP)



COVID-19 diagnostic testing includes molecular (e.g., PCR) or antigen testing for SARS-CoV-2, the virus that causes COVID-19. Diagnostic testing may be performed with a nasopharyngeal swab, nasal swab, or saliva sample, as ordered by the health care provider and per laboratory specifications. At times, a negative antigen test will need to be followed up with a confirmatory molecular test. Serology (antibody testing) cannot be used to rule in or out acute COVID-19.

NYS DOH COVID-19 Guide for School Administrators and Schools Nurses

COVID-19 Screening Flowsheet for Students and Staff



Communicate to your students and staff that they must report absences, symptoms, and positive COVID-19 test results to your school.

CALL 911 IF A STUDENT OR STAFF HAS:

- Trouble breathing or is breathing very quickly
- Severe abdominal pain, diarrhea or vomiting
- Change in skin color - becoming pale, patchy and/or blue
- Racing heart or chest pain
- Lethargy, irritability, or confusion



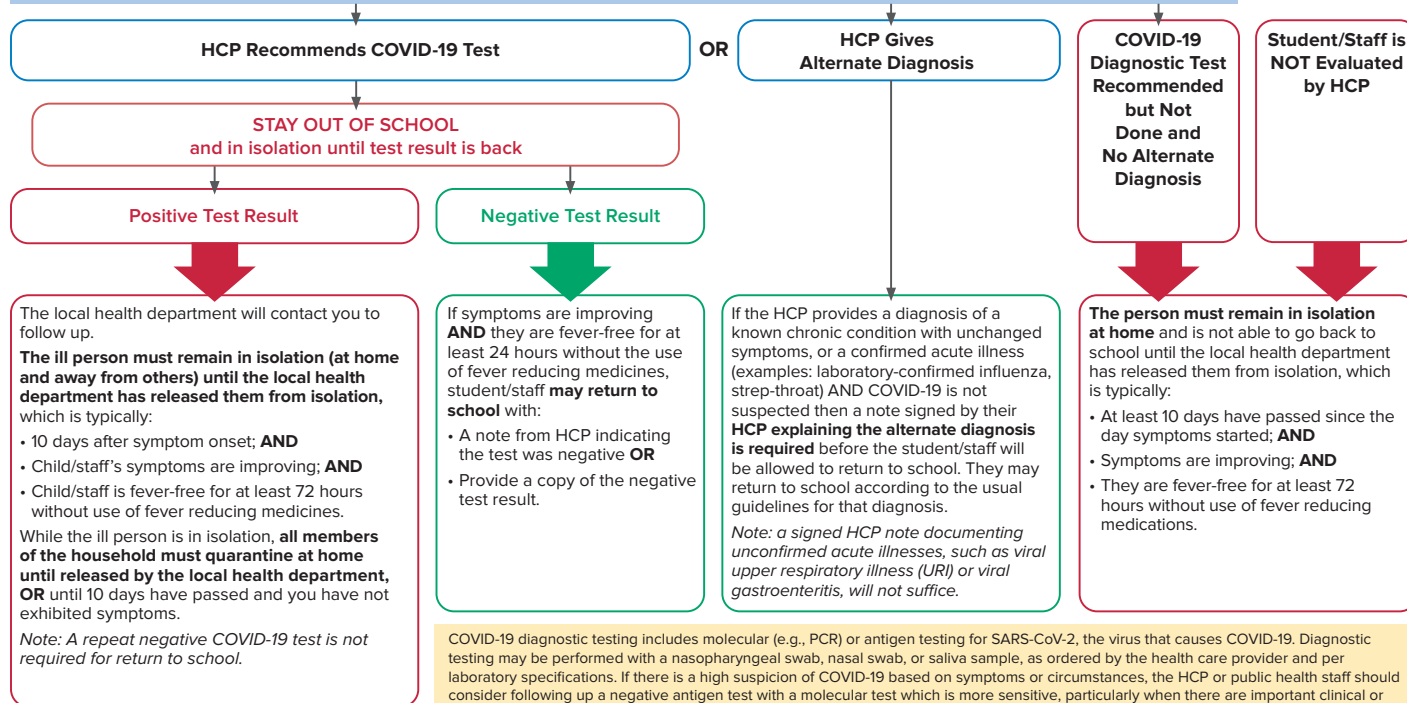
COVID-19 Flowsheet for Student or Staff with COVID-19 Symptoms

Student/staff has symptoms consistent with COVID-19:

- Student/staff member should keep face mask on.
- Staff members should be sent home immediately.
- Students awaiting transport home by the parent/guardian must be isolated in a room or area separate from others, with a supervising adult present using appropriate personal protective equipment (PPE).
- School administration and the parent/guardian should be notified.

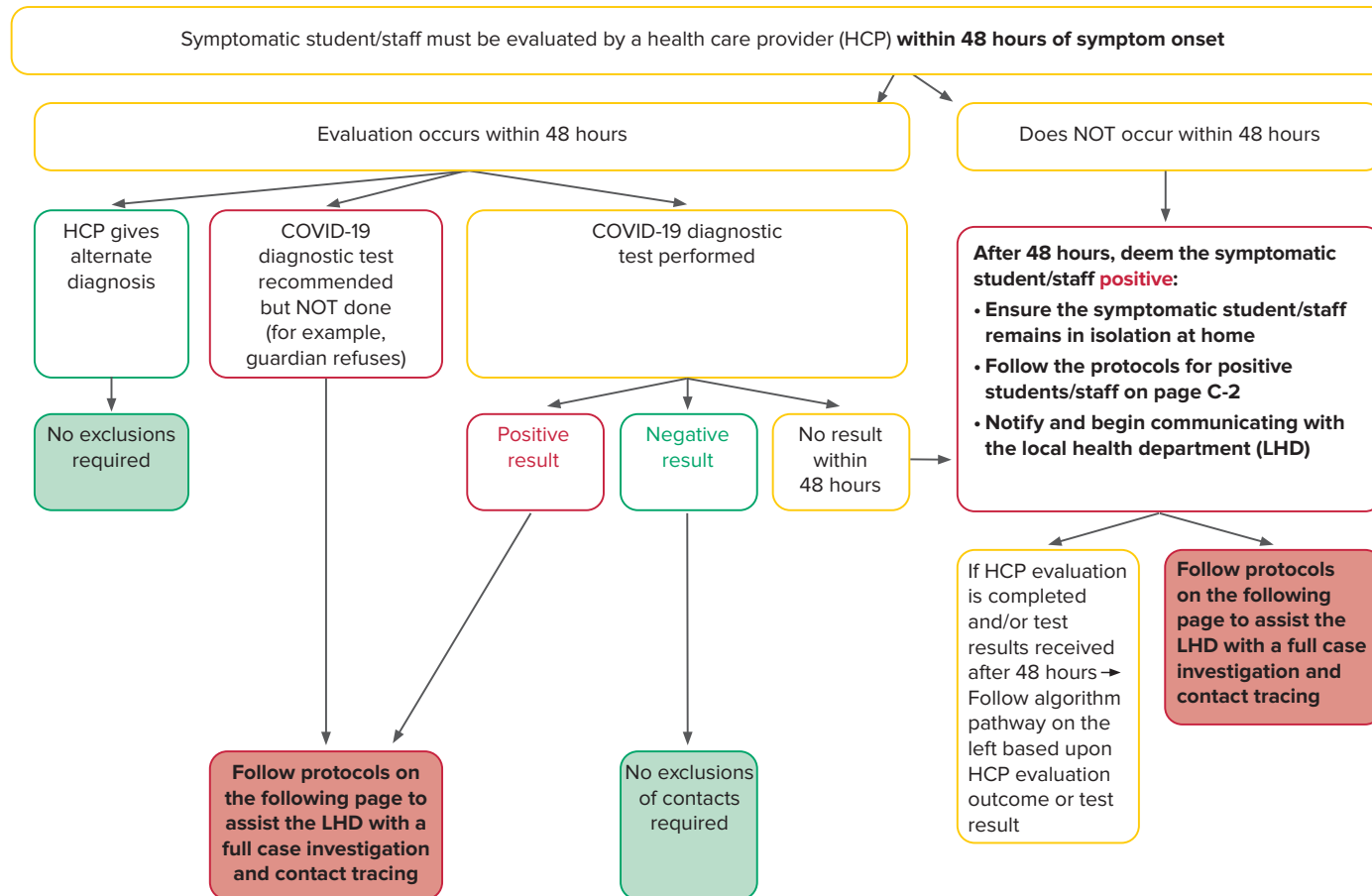
- Provide instructions that the individual must be seen by an HCP for evaluation and have COVID-19 testing (unless determined not necessary by HCP). If they do not have an HCP they should call their local health department.
- Schools should provide a list of local COVID-19 testing locations.
- Clean and disinfect area where the student/staff member was located.

HEALTHCARE PROVIDER (HCP) EVALUATION FOR COVID-19 (can be in-person or by video/telephone as determined by HCP)





COVID-19 exclusion protocol for contacts of symptomatic students and staff





COVID-19 School and Local Health Department Coordination for Contact Tracing

Notify the local health department (LHD):

- Immediately upon learning of a positive case
- 48 hours after symptom onset in a staff member or student if no HCP evaluation or test result has been received. The LHD will collaborate with the school for contact tracing and to identify contacts.

Begin to identify contacts of the case to provide to the LHD.

Provide the LHD with contact information of school personnel who will assist in the LHD's contact investigation. Include the names and phone numbers of at least two points of contact, as appropriate, such as:

- School Principal
- Administrative Support Person
- Principal Designee

Provide the LHD with a list of people who are possible contacts of the case including:

- Contact's full name
- Parent(s)/Guardian(s) full name(s)
- Phone number(s)
- Home address
- Nature of contact (e.g., persons in same classroom, bus, etc.)
- Student, teacher, or type of staff member

Contacts will include students/staff who had exposure to the individual suspected or confirmed to have COVID-19 beginning two days before their symptom onset (or if the case was asymptomatic, two days before the date they were tested) until the case is excluded from the school and in isolation. Schools and LHDs should work together to ensure any before, after, or other daycare; transportation; extracurricular; and other non-school setting contacts are identified and notified of their exposure risk.

THEN

Move forward with preestablished communication plan in consultation with LHD (e.g., notifying the school community of confirmed case(s), as appropriate).

THEN

The LHD will determine which students/staff should be quarantined and excluded from school in addition to any other close contacts, such as social or household contacts. Contacts will be quarantined and excluded from school for 10 days from the date of last exposure to the case and advised to monitor for symptoms. The local health department will initiate isolation and quarantine orders.

When to welcome back affected students/staff:

The LHD will determine when students and staff are released from isolation or quarantine and can return to school.

The LHD should communicate to the school a release from isolation or quarantine in order for the student/staff to be welcomed back to the school.