



# Marie Curie Middle School 158

Dean Discussion



**MARIE CURIE MIDDLE SCHOOL  
M.S. 158**

*A MAGNET SCHOOL FOR MATH, SCIENCE, & TECHNOLOGY*

**COURAGE • OPTIMISM • RESPECT • EXCELLENCE**

# A Message From The Dean

Dear Parents and Guardians,

Welcome to the new school year! I am Dr. Nottingham, Dean of Marie Curie Middle School 158 and I am excited to work with you and your children to make this a safe, successful and enjoyable year.

As the Middle School Dean, my overarching goal is the safety of your children, Part of my role is to support the academic, social, and emotional growth of our students. I work closely with the teachers, counselors, and administrators to ensure that our students have a positive and safe learning environment. I also oversee the implementation of our school policies, such as on time class attendance, discipline, and dress code.

One of my main goals is to foster a strong partnership between home and school. I believe that communication is key to building trust and understanding. Therefore, I encourage you to contact me anytime you have a question, concern, or feedback about your child's education. You can reach me by phone at (718) 423-8100 or by email at [anottingham@schools.nyc.gov](mailto:anottingham@schools.nyc.gov).

I look forward to meeting you and working with your children. Together, we can make this a great year for our middle school community!



**MARIE CURIE MIDDLE SCHOOL**  
**M.S. 158**

A MAGNET SCHOOL FOR MATH, SCIENCE, & TECHNOLOGY

COURAGE • OPTIMISM • RESPECT • EXCELLENCE

# Introduction

Hello and Welcome!

- Dr. Nottingham is a 15 year educator with a Doctorate focused on mental health in middle school.
- Leadership positions include Administrator for Nassau BOCES, Director of Special Education, Special Education Coordinator, Teacher mentor and various Chair positions in the schools.



**MARIE CURIE MIDDLE SCHOOL**  
**M.S. 158**

A MAGNET SCHOOL FOR MATH, SCIENCE, & TECHNOLOGY

COURAGE • OPTIMISM • RESPECT • EXCELLENCE

# Role and Responsibilities

- Monitoring and enhancing the quality of student life in the Middle School<sup>1</sup>.
- Initiating and leading proactive student life programming in partnership with the administrative team and faculty<sup>3</sup>.
- Working collaboratively with our school counselors, the nurses, the director of academic services, and the grade level team leaders<sup>13</sup>.
- Communicating effectively and proactively with parents



**MARIE CURIE MIDDLE SCHOOL**  
**M.S. 158**

A MAGNET SCHOOL FOR MATH, SCIENCE, & TECHNOLOGY

COURAGE • OPTIMISM • RESPECT • EXCELLENCE

# Role and Responsibilities

- Implement and enforce the school's discipline policies and practices, including addressing incidents of bullying, harassment, violence, or vandalism.
- Report and document any safety-related issues or incidents to the appropriate authorities and stakeholders.
- Providing support for students, addressing student behavior and coordinating additional assistance with our counseling and SEL teams
- Chair the School Safety Team to ensure a safe and orderly environment



**MARIE CURIE MIDDLE SCHOOL**  
**M.S. 158**

A MAGNET SCHOOL FOR MATH, SCIENCE, & TECHNOLOGY

COURAGE • OPTIMISM • RESPECT • EXCELLENCE

# Student Support

- Conduct student investigations and administer appropriate disciplinary actions in accordance with the Chancellor's Regulations
- Monitor student behavior data and identify trends and areas of improvement
- Provide individual and group counseling to students on academic, social, emotional, and behavioral issues
- Refer students to appropriate internal and external support services, such as guidance counselors, social workers, mental health providers, etc.
- Implement restorative justice practices and facilitate conflict resolution among students



**MARIE CURIE MIDDLE SCHOOL**  
**M.S. 158**

A MAGNET SCHOOL FOR MATH, SCIENCE, & TECHNOLOGY

COURAGE • OPTIMISM • RESPECT • EXCELLENCE

# School Community

- Manage attendance systems and interventions – lateness and cutting
- Develop and manage student leadership opportunities, such as Student Council, Peer Mediation, etc.
- Participate in the school's Positive Behavior Intervention System (PBIS) and oversee the implementation of rewards and consequences – cougar chips
- Social Emotional Learning (SEL)



**MARIE CURIE MIDDLE SCHOOL**  
**M.S. 158**

A MAGNET SCHOOL FOR MATH, SCIENCE, & TECHNOLOGY

COURAGE • OPTIMISM • RESPECT • EXCELLENCE

# Parent Involvement and Partnership

- As a school community we... Communicate regularly with parents regarding student progress, behavior, attendance, and other matters
- Establish positive relationships with parent leaders and organizations, such as the Parent Association (PA) and the School Leadership Team (SLT)
  - The PA Engage parents in school events and activities and solicit their feedback and input
- Address parent concerns and complaints in a timely and respectful manner



**MARIE CURIE MIDDLE SCHOOL**  
**M.S. 158**

A MAGNET SCHOOL FOR MATH, SCIENCE, & TECHNOLOGY

COURAGE • OPTIMISM • RESPECT • EXCELLENCE

# Safety

- responsible for ensuring a safe and supportive learning environment for all students and staff
- to implement and monitor the school's safety policies and procedures.



**MARIE CURIE MIDDLE SCHOOL**  
**M.S. 158**

A MAGNET SCHOOL FOR MATH, SCIENCE, & TECHNOLOGY

COURAGE • OPTIMISM • RESPECT • EXCELLENCE

# THANK YOU!

Staff-Parent-Student-"ROAD MAP"

- <https://tinyurl.com/158roadmap2324>
  - Code of Conduct (Page 11)
  - Dress Code (Page 13)
  - Cell Phone Policy (Page 19)

**Contact me**

Dr. Nottingham

[anottingham@schools.nyc.gov](mailto:anottingham@schools.nyc.gov)

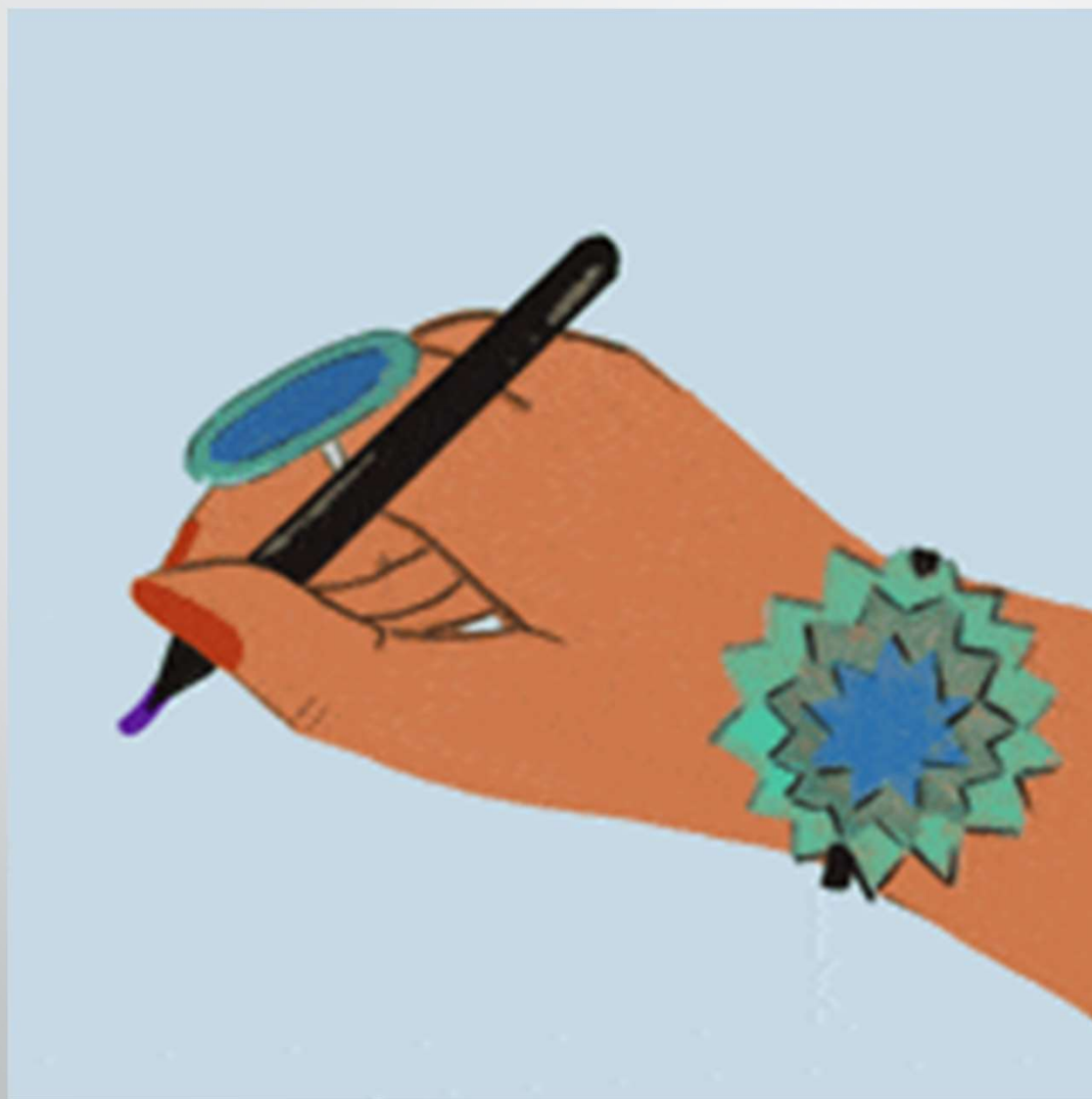
718 423-8100



**MARIE CURIE MIDDLE SCHOOL**  
**M.S. 158**

A MAGNET SCHOOL FOR MATH, SCIENCE, & TECHNOLOGY

COURAGE • OPTIMISM • RESPECT • EXCELLENCE



**MARIE CURIE MIDDLE SCHOOL**  
**M.S. 158**

A MAGNET SCHOOL FOR MATH, SCIENCE, & TECHNOLOGY

**COURAGE • OPTIMISM • RESPECT • EXCELLENCE**