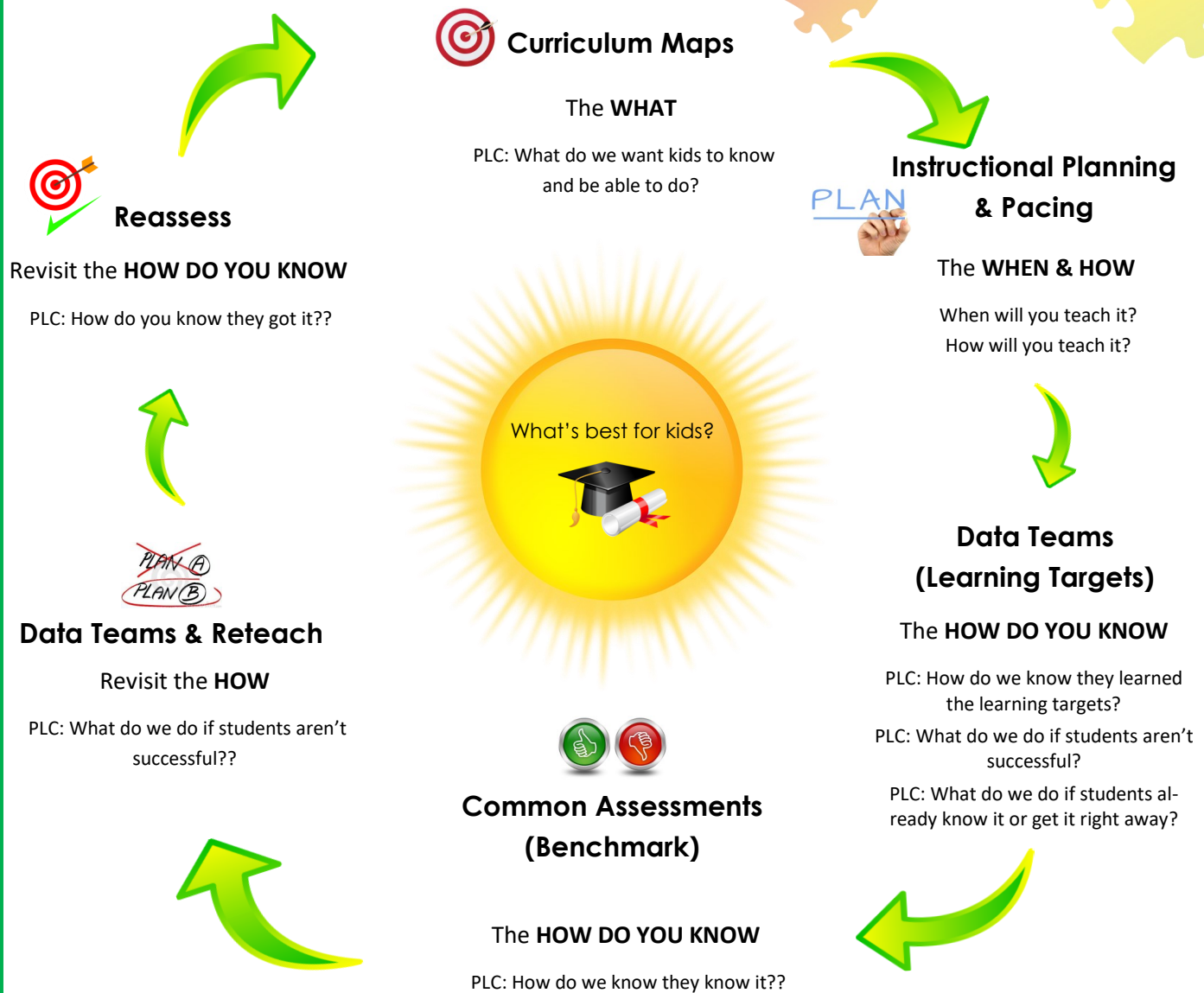


A Quick Guide to Curriculum, Instruction, & Assessment

In Sweetwater County School District No. 1

The Teaching and Learning Process



Learning Statement

In Sweetwater County School District #1, we believe proficiency is the students' ability to independently apply skills and academic outcomes.

Through the implementation of our curriculum maps, using multiple teaching strategies and differentiation, students will demonstrate proficiency of essential skills. Students who have met proficiency will continue working toward mastery through a variety of purposeful activities. When true mastery has occurred, students can – over time – demonstrate their learning more than once and in more than one way.

Students who have not met proficiency on essential skills will receive supplemental and/or intensive instruction until they have.