

# JUNIOR PARENT NIGHT

PEARL RIVER HIGH SCHOOL  
GUIDANCE DEPARTMENT

Mr. Mark Bernasconi  
Mrs. Evelyn Hornacek  
Mrs. Randee Stark  
Mr. Rick Urvater

# Junior Year Priorities

- Focus on grades and GPA
- Focus on college entrance exam prep  
(SAT, ACT, Subject Tests)
- Explore and visit colleges



# College Entrance Exams

- Know tests required for admissions

**SAT:** Components include evidence based reading/writing and math (essay optional)

**ACT:** Components include reading, math, science reasoning and English (essay optional)

**SAT Subject Tests:** Measure knowledge and skills in particular areas (History, Literature, Science, Math, Foreign Languages)

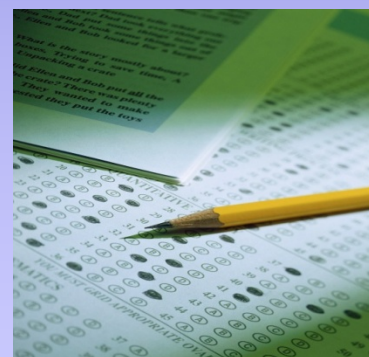
- Register for the SAT/ACT

When? SAT/ACT - Spring

SAT Subject – May/June

- Colleges Need Official Test Scores

– Student responsibility to send scores to colleges through testing websites



# 2017-2018 SAT Test Dates

Test Date	Normal Deadline	Late Registration*	Online Score Release
August 26, 2017	July 28, 2017	August 15, 2017	September 14, 2017
October 7, 2017	September 8, 2017	September 22, 2017	October 27, 2017
November 4, 2017	October 6, 2017	October 20, 2017	November 23, 2017
December 2, 2017	November 3, 2017	November 17, 2017	December 21, 2017
March 10, 2018**	February 9, 2018	February 23, 2018	March 29, 2018
May 5, 2018	April 6, 2018	April 20, 2018	May 24, 2018
June 2, 2018	May 4, 2018	May 18, 2018	June 21, 2018

*\*The late registration deadline is one week earlier if you are registering by mail.*

**To Register: [www.collegeboard.org](http://www.collegeboard.org)**

# 2017-2018 ACT Test Dates

Test Date	Deadline	Late Deadline	Score Release*
Sept 9, 2017	Aug 4, 2017	Aug 18, 2017	Sept 10; Oct 3, 2017
Oct 28, 2017	Sept 22, 2017	Oct 6, 2017	Nov 7; Nov 21, 2017
Dec 9, 2017	Nov 3, 2017	Nov 17, 2017	Dec 19; Jan 2, 2018
Feb 10, 2018	Jan 12, 2018	Jan 19, 2018	Feb 2; Mar 6, 2018
Apr 14, 2018	Mar 9, 2018	Mar 23, 2018	Apr 24; May 8, 2018
June 9, 2018	May 4, 2018	May 18, 2018	June 19; July 3, 2018
July 14, 2018	June 15, 2018	June 22, 2018	July 24; Aug 7, 2018

**To Register: [www.actstudent.org](http://www.actstudent.org)**

# Not All Schools Require SAT/ACT Scores

- **Nearly 900 four-year colleges do not use the SAT or ACT to admit substantial numbers of bachelor degree applicants**



Source: [www.fairtest.org](http://www.fairtest.org)

# A Few Schools That Do Not Require the SAT/ACT



- Bates College
- Bowdoin College
- Connecticut College
- College of the Holy Cross
- Fairfield University
- Franklin and Marshall College
- George Washington University
- Gettysburg College
- Goucher College
- Hobart and William Smith Colleges
- Johnson and Wales University
- Loyola University
- Marist
- Muhlenberg College
- New York University
- Providence College
- Stonehill College
- University of Scranton

How do we even begin to search  
for colleges!?!



# Step 1: Self Evaluate

# Find the Best Match for Your Child!

- Academic interests, abilities, and learning style
- Goals and values
- Strengths and weaknesses
- Passions
- Personality, independence, and relationships to others
- Likes and dislikes



## Step 2: Find Potential Matches Through Research

# Know Your Resources

- Counselors, Friends, Family, Teachers, Co-workers
- Naviance (Family Connection)
- Websites
- Books
- Meet Visiting College Reps
- College Fairs



# What is Naviance?

- Web-based resource that supports career and college planning
- On-line tool for collaboration among counselors, students, and parents
- Family Connection (parent/student version) directly linked to counselor's office
- Counselor's office tracks and analyzes data about colleges that is specific to our school

# What Can You Do With It?

- Research Colleges

Compare GPA, standardized test scores, and other statistics to actual historical data from our graduates

- Review and compare college profiles, produce scattergrams
- Show schedule of college visits
- Research scholarship opportunities
- Research careers



# How Is It Accessed?

On the web at

<http://connection.naviance.com/prhs>

or by visiting the PRHS guidance web page for juniors

### Welcome to Family Connection

Nice to see you again! Please log in.

e-mail

password

☐ remember me

Log In

[forgot your password?](#)

[need additional help?](#)

are you new here?

[I'm a guest](#)

[I need to register](#)

**Pearl River High School**  
275 E Central Avenue  
Pearl River NY 10965  
p: (845) 620-3814  
[Privacy Policy](#)

# Family Connection Home Page

Pearl River High School

Logged in as: Randee Stark ([log out](#))

[Manage my account](#)

## family connection

[home](#)[colleges](#)[careers](#)[about me](#)[my planner](#)


### my colleges

- [colleges I'm thinking about](#)

### links

- [collegeboard](#)
- [act](#)
- [common app](#)
- [ncaa clearinghouse](#)
- [fafsa](#)
- [fafsa pin](#)
- [css profile](#)
- [fairtest list](#)
- [prhs guidance page](#)

### what's new

 You received an e-mail: [Scholarships](#) from Cherrie Cacas.


### Welcome Message


Welcome to Naviance - your navigation tool for college and career exploration!


If you have trouble navigating through this site, please contact your child's guidance counselor


Mr. Bernasconi, Mr. Hanlon, Mrs. Stark, Mr. Urvater

**Get the mobile app!**  
Naviance Student

 Available on the  
**App Store**

 You have **8 new** [messages](#)

 [document library](#)

 [contact us](#)

**Pearl River High School**  
275 E Central Avenue  
Pearl River NY 10965  
p: (845) 620-3814  
[Privacy Policy](#)

# Document Library

Pearl River High School

Logged in as: Randee Stark ([log out](#))

[Manage my account](#)

## family connection

[home](#)

[colleges](#)

[careers](#)

[about me](#)



[my planner](#)

### my colleges

- [colleges I'm thinking about](#)

### links

- [collegeboard](#)
- [act](#)
- [common app](#)
- [naaa clearinghouse](#)
- [fafsa](#)
- [fafsa pin](#)
- [css profile](#)
- [fairtest list](#)
- [prhs guidance page](#)

### document library

Click on the name of the folder to view files in that folder.

#### Folder

[E-mail permission](#)

[Letter of Recommendation Form](#)

[On-line App Form \(Green Sheet\)](#)

[Parent Brag Sheet](#)

[Questions for College Reps](#)

[Scholarship Applications](#)

[Student Brag Sheet](#)

[Transcript Release Form](#)

**Pearl River High School**

275 E Central Avenue

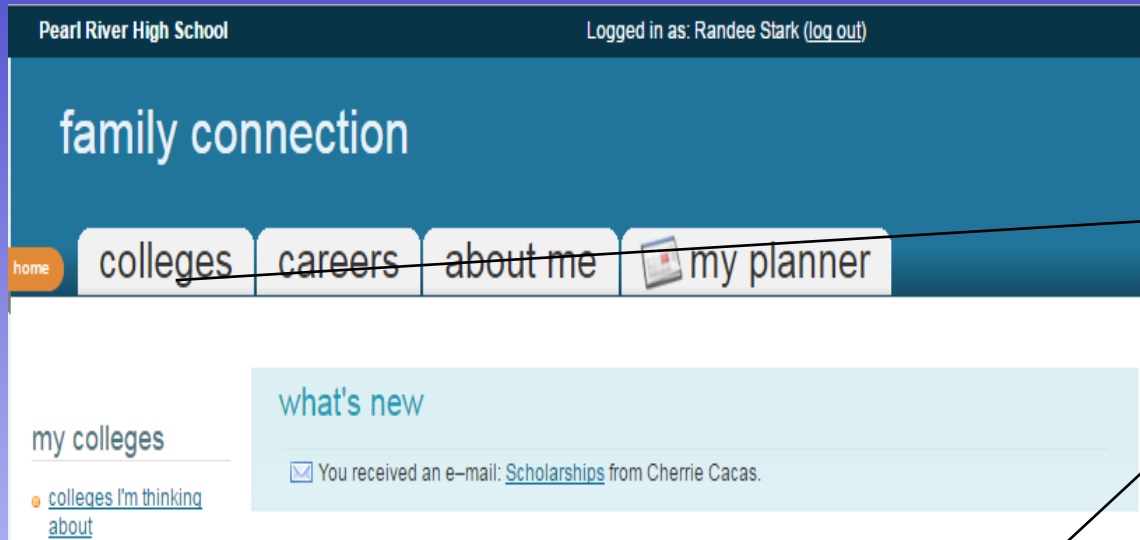
Pearl River NY 10965

p: (845) 620-3814

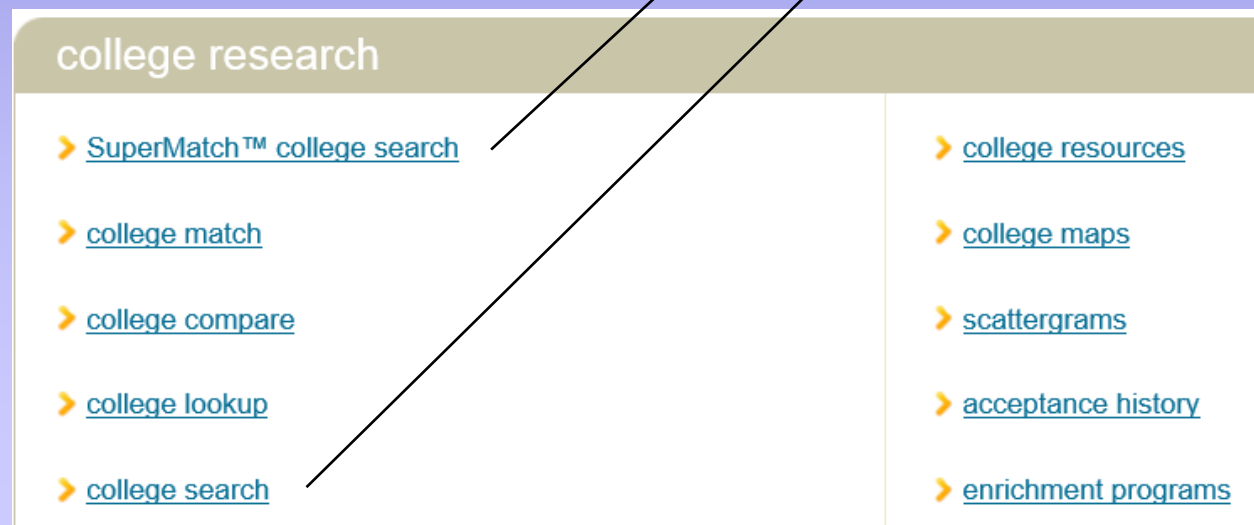
[Privacy Policy](#)

# College Search on Naviance

Narrow 6000+ schools to a manageable list



College Search



# College Search on Naviance

Filter using:

- Type of school
- Location
- Campus size
- Activities & sports
- Majors & academics
- Admissions
- Cost
- Special programs

Number of matches: 61 ([start over](#)) ([save search](#))

**Hand-picked List**

[Delete Selected](#) [Compare](#) [Add to My Colleges](#)

**Search Criteria**

[Private](#)  
[Coed](#)  
[Regions: Mid-Atlantic](#)  
[Enrollment: 2-5k, 5-10k](#)  
[Campus Surroundings: Large City, Small City](#)

**Colleges that match your criteria:**

★ = extended profile available

College	(select for info)	(select for info)	(select for info)
<a href="#">pick</a> <a href="#">Albright Coll</a> Reading, PA			
<a href="#">pick</a> ★ <a href="#">Alvernia Univ.</a> Reading, PA			
<a href="#">pick</a> <a href="#">American Univ</a> Washington, DC			
<a href="#">pick</a> <a href="#">Art Inst of Philadelphia</a> Philadelphia, PA			
<a href="#">pick</a> <a href="#">U of the Arts</a> Philadelphia, PA			
<a href="#">pick</a> <a href="#">Berkeley Coll NYC</a> New York, NY			
<a href="#">pick</a> <a href="#">Bryant and Stratton College</a> Rochester, NY			
<a href="#">pick</a> <a href="#">Canisius Coll</a> Buffalo, NY			
<a href="#">pick</a> <a href="#">Carnegie Mellon Univ</a> Pittsburgh, PA			
<a href="#">pick</a> ★ <a href="#">Catholic Univ of Amer</a> Washington, DC			
<a href="#">pick</a> ★ <a href="#">Columbia Univ</a> New York, NY			
<a href="#">pick</a> <a href="#">DeSales Univ</a> Center Valley, PA			
<a href="#">pick</a> <a href="#">DeVry Inst of Tech</a> Long Island City, NY			
<a href="#">pick</a> <a href="#">Duquesne Univ</a> Pittsburgh, PA			
<a href="#">pick</a> ★ <a href="#">Eastern U</a> St. Davids, PA			
<a href="#">pick</a> ★ <a href="#">Fordham Univ</a> Bronx, NY			
<a href="#">pick</a> <a href="#">Gannon Univ</a> Erie, PA			
<a href="#">pick</a> <a href="#">Georgetown Univ</a> Washington, DC			
<a href="#">pick</a> <a href="#">Gwynedd-Mercy Coll</a> Gwynedd Valley, PA			
<a href="#">pick</a> ★ <a href="#">Hofstra Univ</a> Hempstead, NY			
<a href="#">pick</a> <a href="#">Holy Family U</a> Philadelphia, PA			
<a href="#">pick</a> <a href="#">Howard Univ</a> Washington, DC			
<a href="#">pick</a> <a href="#">Interboro Inst</a> New York, NY			
<a href="#">pick</a> ★ <a href="#">Iona Coll</a> New Rochelle, NY			
<a href="#">pick</a> <a href="#">Johns Hopkins Univ</a> Baltimore, MD			

# Educational Opportunity Program (EOP)

- EOP provides access, academic support and financial aid to students who show promise for succeeding in college but who may not otherwise be offered admission.
- To be eligible a student must:
  - 1) be a New York State resident for 12 months prior to enrollment
  - 2) require alternate admissions consideration
  - 3) qualify as economically disadvantaged according to the guidelines indicated.

## EOP Income Guidelines\* 2018-19

Household Size (Including head of household)	Total Annual Income in 2016 Calendar Year
1	\$ 22,311
2	30,044
3	37,777
4	45,510
5	53,243
6	60,976
7	68,709
8	76,442*

\*Plus \$7,733 for each additional household member in excess of eight.

# College Profile

family connection

home

colleges

careers

about me

What do you think of our college profiles?

Rate us!



Bucknell University ❤️  
Lewisburg, PA, US | [bucknell.edu](https://bucknell.edu)

Communicate ▾

Apply online

Learn More ▾

Overview

Studies

Student Life

Admissions

Costs



AVERAGE NET PRICE ⓘ

**\$18,079**

Income:

[More about Cost & Aid](#)

from 2016

GRADUATION RATE ⓘ

**89%**

Within 6 years

[More about Learning Environment](#)

from 2016

ACCEPTANCE RATE ⓘ

**25%**

[Check out Scattergrams to see how this relates to you](#)

from 2016

COLLEGE OVERLAPS

**92**

Students who apply to this college also applied to these 92 colleges

[Learn more](#)

EARLY DECISION II DEADLINE

January

**15**

[See all deadlines](#)

## Quick Facts

Website

[bucknell.edu](https://bucknell.edu)

School Type

Private / 4 Year

Undergraduate Enrollment

3,569

Student-to-Faculty Ratio

10 to 1

Campus Surroundings

Small Town

Degrees Offered

- Masters
- Bachelors

How you compare with **other students from your high school** who have been accepted to Bucknell University

We've compared the scores of all the students who have been accepted from Mount Saint Mary Academy with your scores.



[Compare me with all accepted applicants](#)

Note: All scores have been converted to the Standard College Board 4.0 GPA scale, the SAT 1600 point scale, and the ACT 36 point scale.

# Colleges I'm Thinking About

family connection

home

colleges

careers

about me



my planner

search for colleges:

Go

MORE SEARCH OPTIONS >>

colleges I'm thinking about

[+ add colleges to this list](#) | [compare me](#)

my colleges

> [colleges I'm thinking about](#)

> [colleges I'm applying to](#)

> [college visits](#)

college research

> [SuperMatch™ college search](#)

> [college match](#)

> [college compare](#)

> [college lookup](#)

College	Delivery type	Added By	Expected Difficulty*	My Interest	Application Deadlines†				Actions		
					Early Decision	Early Action	Priority	Regular Decision	Manage Communication	Graph	WWW
<input type="checkbox"/> <a href="#">Binghamton</a>		student	N/A	<input type="text" value="N/A"/>	-	Nov 01	-	Jan 15			
<input type="checkbox"/> <a href="#">Boston Univ</a>		student	N/A	<input type="text" value="N/A"/>	Nov 01	-	-	Jan 03			
<input type="checkbox"/> <a href="#">Harvard University</a>		student	N/A	<input type="text" value="N/A"/>	-	Nov 01	-	Jan 01			
<input type="checkbox"/> <a href="#">Manhattan Coll</a>		student	N/A	<input type="text" value="N/A"/>	Nov 15	-	-	-			
<input type="checkbox"/> <a href="#">U of Rhode Island</a>		student	N/A	<input type="text" value="N/A"/>	-	Dec 01	-	Feb 01			

Update Interest

Remove from List

\* Difficulty of admission specifically for you as estimated by your counselor

†College information is provided by the colleges themselves. Costs, dates, policies, and programs are subject to change, so please confirm important facts with college admission personnel.

# College Compare/ Overlaps on Naviance

COLLEGE OVERLAPS

**168**

Students who apply to this college also applied to these 168 colleges

[Learn more](#)

## Top 10 Application Overlaps (2008 - 2016) :: [compare me](#)

Overlaps	College	Apps	Accept	Accept %	Accept SAT Avg. 1600	Accept SAT Avg. 2400	Accept ACT Avg.	Accept GPA Avg.
	Fordham Univ	227	129	57%	-	1883	28	3.9
82	<a href="#">Loyola Univ MD</a>	185	137	74%	-	1743	25	3.72
81	<a href="#">Villanova Univ</a>	181	70	39%	-	1939	29	4.05
73	<a href="#">Providence Coll</a>	177	105	59%	-	1758	26	3.82
73	<a href="#">Saint Joseph's Univ</a>	182	164	90%	-	1644	24	3.53
67	<a href="#">Boston Coll</a>	144	56	39%	-	2010	30	4.18
65	<a href="#">Rutgers University-New Brunswick</a>	211	160	76%	1230	1793	26	3.77
60	<a href="#">New York Univ</a>	96	33	34%	-	1965	27	3.97
58	<a href="#">Fairfield Univ</a>	174	137	79%	-	1691	24	3.61
41	<a href="#">U of Scranton</a>	167	145	87%	-	1647	23	3.53
39	<a href="#">Boston Univ</a>	99	44	44%	-	1905	27	3.87

Step 3: Visit colleges and also  
have your child meet with college  
reps who visit PRHS



# Campus Visits

- Best to visit when school is in session
  - A good time is during February / April breaks
  - Junior / Senior privilege: 2 excused college days per year
- Sign up online for tour and/or interview
- Take notes, ask questions, evaluate what you see and hear, and take pictures!
- Try not to judge school based on tour guide, weather, etc.



# Visit Schedule

College	Representative	Registrations	Date	Time
Elon University	David Kerman	6	Thu September 15, 2016	10:00 AM
Centenary University	Angelica Aceti	0	Thu September 22, 2016	1:15 PM
Felician University	Daniel Florez	0	Fri September 23, 2016	11:00 AM
Saint Mary's College	Colleen Golden	1	Fri September 30, 2016	10:00 AM
The University of Scranton	Melissa Bevacqua	11	Tue October 4, 2016	10:00 AM
The College of New Jersey	Jennie Sekanics	6	Wed October 12, 2016	10:00 AM
Bentley University	Chris Mann	1	Wed October 12, 2016	1:45 PM
High Point University	Megan Plasket	1	Fri October 14, 2016	9:15 AM
College of the Holy Cross	Kirsten Vanhorne	5	Mon October 17, 2016	9:15 AM
Hobart and William Smith Colleges	Jacqueline DeLaFuenta	2	Mon October 17, 2016	1:15 PM
Saint Joseph's University	Brad Simon	5	Tue October 18, 2016	1:15 PM
Saint Anselm College	Paula Mensch	0	Thu October 20, 2016	9:15 AM
Fordham University	Rosellen Greco	15	Tue October 25, 2016	11:00 AM
State University of New York	Brian Culligan	1	Wed October 26, 2016	9:15 AM
Sarah Lawrence College	Royce Mussman	1	Fri October 28, 2016	10:00 AM
Hofstra University	Grace Tobin	1	Tue November 1, 2016	9:00 AM
Immaculata University	Owen Logue	0	Fri November 4, 2016	9:15 AM
Fashion Institute of Design and Merchandising, Los Angeles	Lindsay Hannon	0	Wed November 16, 2016	9:15 AM
Salisbury University	Logan O'Meara	1	Mon November 28, 2016	11:00 AM
Salisbury University	Logan O'Meara	0	Mon December 5, 2016	10:00 AM
Savannah College of Art and Design	Taylor Rasak	1	Tue December 6, 2016	10:00 AM

Within each individual college profile, there is an area which displays upcoming scheduled visits & school contact

## Boston College :: Chestnut Hill, MA :: U.S.

### Scheduled Visits

11/30/2016 1:00pm

### School Contacts

[Howard Singer \(08\)](#)

Students click "Sign Up" and they are automatically added to a roster to track their participation in the visit.

# Step 4: Refine and Balance “THE LIST”



# Refine and Balance the List!

- Importance of a well balanced list
  - identify likelihood of admission
  - safety, target, reach
  - 6-9 applications
- Use the Naviance Dashboard and Scattergrams
  - GPA and SAT/ACT scores
- 2 safeties = less stress
  - more likely to receive \$\$\$



# Scattergram

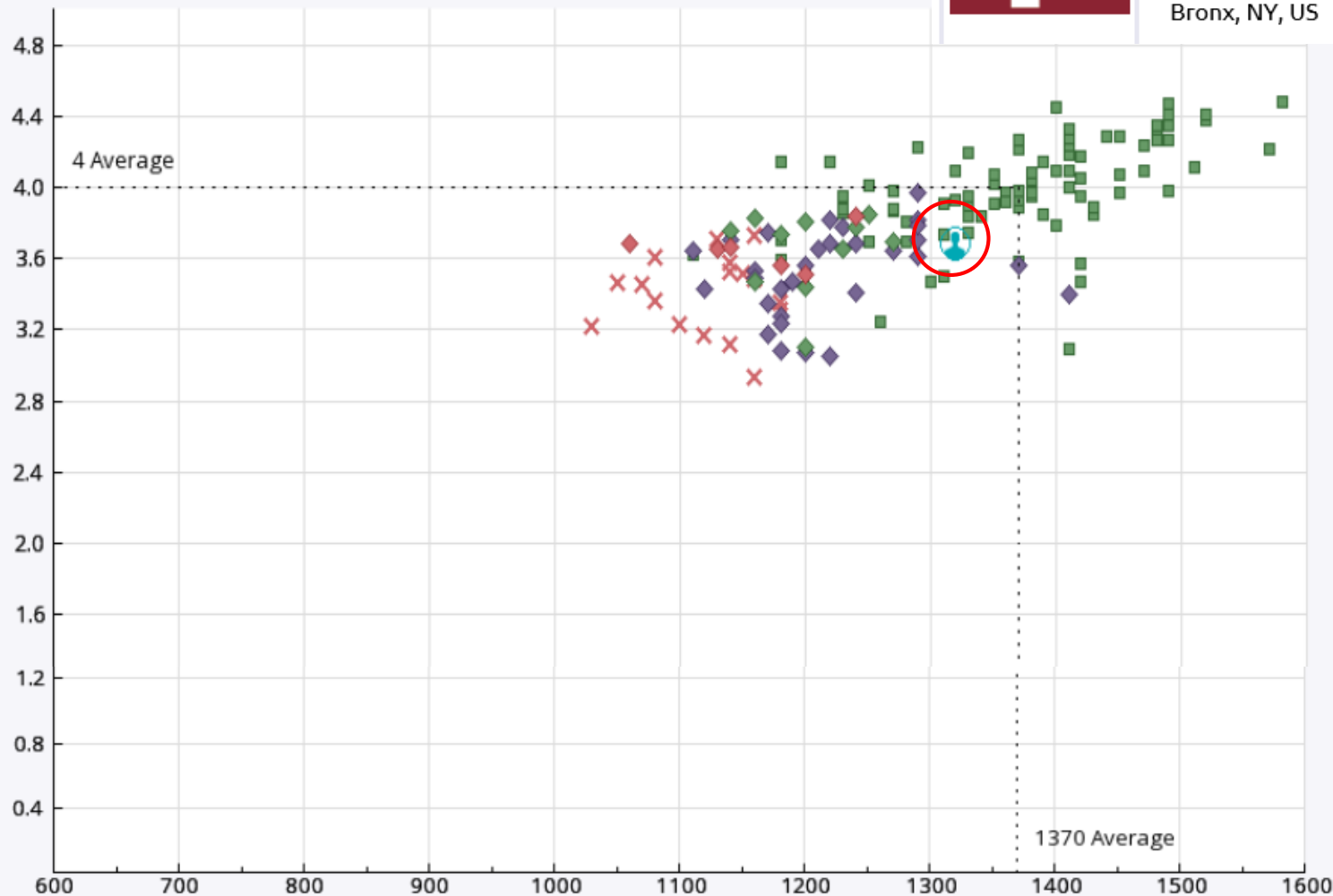
Comparing vs. SAT (1600 Scale)



Fordham University - Lincoln Center

Campus/Rose Hill Campus

Bronx, NY, US | [fordham.edu](https://fordham.edu)



## KEY

Jane Doe

Accepted

Deferred/Accepted

Denied

Deferred/Denied

Deferred

# Compare Personal Statistics to National Data on Naviance



Fordham University - Lincoln Center  
Campus/Rose Hill Campus ♡  
Bronx, NY, US | [fordham.edu](https://fordham.edu)

How you compare with **all students** who have been accepted to Fordham University - Lincoln Center Campus/Rose Hill Campus

We've taken the middle 50%<sup>1</sup> of all students who've been accepted to Fordham University - Lincoln Center Campus/Rose Hill Campus and compared your scores with theirs.

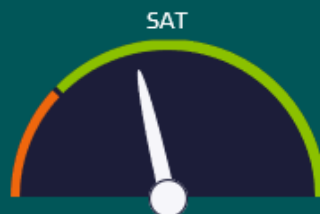


GOOD

You: **3.68**

Average: 3.6

Range: 2 - 4<sup>1</sup>



FAIR

You: **1320**

Average: 1350

Range: 1270 - 1410<sup>1</sup>



FAIR

You: **28**

Average: 29

Range: 27 - 31<sup>1</sup>



FAIR

Some of your scores are below average.

[Compare me with students from my high school](#)

ACCEPTANCE RATE <sup>1</sup>

**48%**

[Check out Scattergrams to see how this relates to you](#)

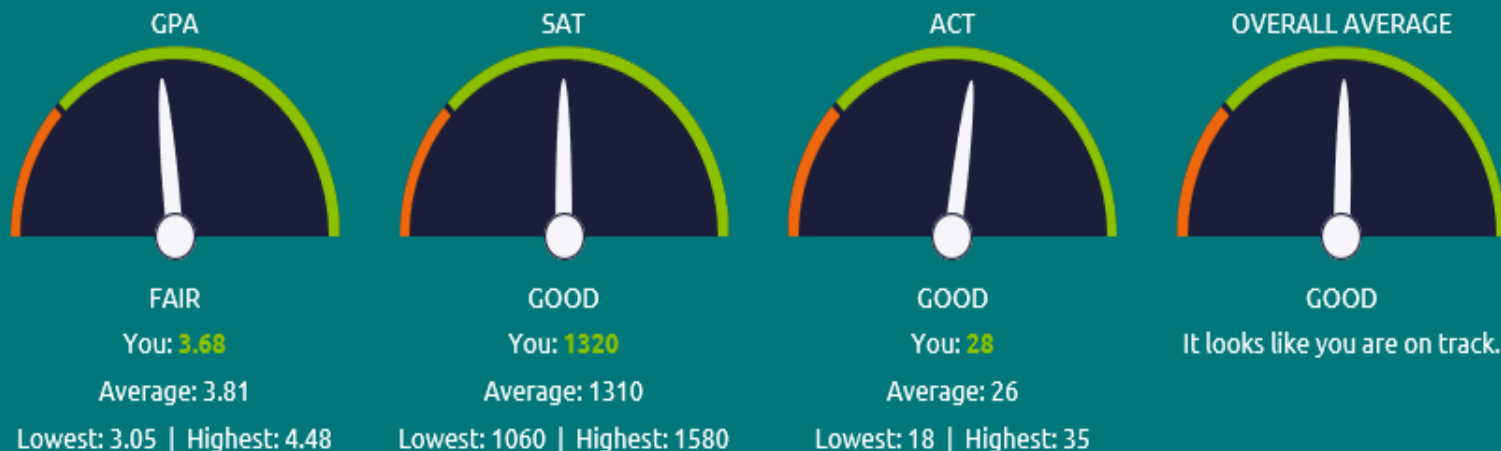
# Compare Personal Statistics to PRHS Data on Naviance



Fordham University - Lincoln Center  
Campus/Rose Hill Campus ♡  
Bronx, NY, US | [fordham.edu](https://fordham.edu)

How you compare with **other students from your high school** who have been accepted to Fordham University - Lincoln Center Campus/Rose Hill Campus

We've compared the scores of all the students who have been accepted from Mount Saint Mary Academy with your scores.



[Compare me with all accepted applicants](#)



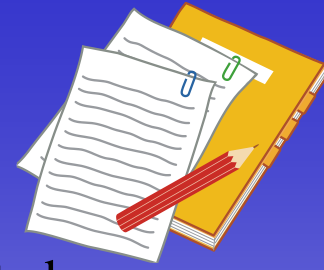
# Step 5: Gather the Components of the Application



# Application

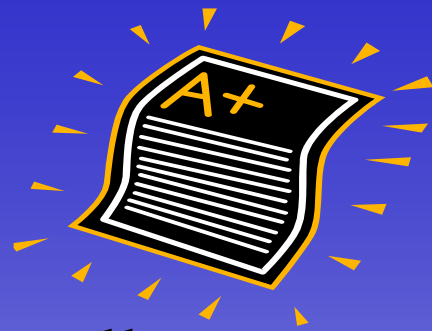
- Common Application – What is it?
- The Common Application will be available as of August 1st.
- The most popular ways to apply are through the Common Application or the college's application.
- Most important piece of the process is the student's application and that the application arrives on time.
- Main components include application itself, an essay, and letters of recommendation.
- **Do NOT miss the deadline!!**

# Ways to Apply?



- **Early Decision (EDI/EDII)** – a binding agreement. Once accepted, one MUST attend the school.
- **Early Action (EA)** – Apply early and receive an admission decision early (usually December or January).
  - Restrictive Early Action-definition varies from school to school
  - Single Choice Early Action - does not allow candidates to apply to other schools during the early-action period only.
- **Regular** – Applications are due from January to March, outcome is mailed in April.
- **Rolling**-Decisions can be released 4 to 6 weeks after an application is completed
- Early Action and Regular Decision deposits are due by May 1<sup>st</sup>.
- **Please note: All on-line application forms must be in the guidance office ten school days prior to any college application deadline.**

# Transcript



- Colleges will look at all available grades.
- The high school transcript is submitted to colleges after students submit a “green sheet” to guidance.
  - Displays the final grades received in every subject from freshman through junior year.
- Senior year grades are automatically submitted at the end of the first semester (also known as Mid-Year Reports). First quarter grades are submitted ONLY upon student request.
- Cumulative GPA and class rank are listed on the bottom of the transcript. College testing scores are NOT reported on the transcript.

# College Essay



- 12<sup>th</sup> Grade English teachers will begin to address essays in class in early September.
- Be yourself, be real! Creativity is highly valued!
- Colleges want to see you in the framework of your passions, values, and writing mechanics.
- **Proofread! Proofread! Proofread!**

# Letters of Recommendation

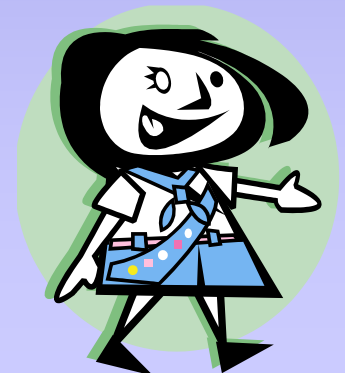


- Two teacher letters from teachers who know your child well. Preferably teachers from junior year.
- Students must ask teachers in person, and present them with the pink Teacher Recommendation form. They must follow up with a request on Naviance.
- Students should ask teachers before school ends in June.
- Counselor letter: counselors write a letter for each one of their students.
- Parent Brag Sheet: complete and send in to your school counselor by June 1st.
- Student Brag Sheet: must be completed and given in to your school counselor by June 1st.



# Resume

- Colleges are looking for individuals that will enhance their campus.
- Colleges seek students who have **QUALITY** rather than **QUANTITY** in their activities!
- Emphasize the most significant activities. Exhibit level of commitment and leadership!
- **IT'S NEVER TOO LATE TO GET INVOLVED IN THE SCHOOL AND THE COMMUNITY!**
- NCAA - register online junior year.



# Make the Summer Count!

- Students should set up an enrichment program or a volunteer project, take courses at a college, or seek internship opportunities in a field that interests them.
- See the Enrichment Program list on Naviance for ideas (colleges > college research > enrichment programs)



# How Parents Can Help

- Topics to discuss with your child:  
How far? How much?
- Encourage your child to keep his/her options open!
- Research and visit colleges together. Use Naviance scattergrams as a resource.
- Encourage your child to use the checklist on Naviance to stay organized and on task.



# Naviance Checklist

## family connection

home

colleges

careers

about me



my planner

### interesting things about me:

- > [resume](#)
- > [game plan](#)
- > [documents](#)
- > [journal](#)
- > [checklist](#)
- > [survey history](#)

### official things:

- > [profile](#)
- > [inbox](#)
- > [account](#)
- > [test scores](#)

### surveys to take:

- [survey history](#)

### checklist

	Grade	Status	Date Completed
Register for SAT's and/or ACT's	11	completed	03/30/2016
Request teacher recommendation letters A copy of this Request form is available by clicking the "home" tab, then clicking on the "document library" tab. After you request letters from your teachers in person, follow up with a request through Naviance. Click the "colleges" tab, click "letters of recommendation".	11	completed	12/14/2016
Complete Transcript Release Form A copy of this form is available by clicking the "home" tab, then clicking on the "document library" tab.	11	completed	12/14/2016
Complete E-mail Permission Form A copy of this form is available by clicking the "home" tab, then clicking on the "document library" tab.	11	not completed	<a href="#">Mark this as completed</a>
Complete Brag Sheet for guidance A copy of the Brag Sheet is available by clicking the "home" tab, then clicking on the "document library" tab.	11	not completed	<a href="#">Mark this as completed</a>
Add colleges to Naviance Create a list of colleges on Naviance that you are most interested in applying to. If you need help expanding your list, you can search for colleges on Naviance by clicking on the "colleges" tab and either click "Super Match college search" or "college search". As you find colleges that interest you, click the tab for "ADD TO COLLEGES I'M THINKING ABOUT" to add colleges to your list.	11	not completed	<a href="#">Mark this as completed</a>
Explore careers on Naviance Click on the "careers" tab on Naviance to explore different careers, and take career assessment tests to help you find career areas that may be of interest to you.	11	not completed	<a href="#">Mark this as completed</a>
Create a resume	11	not completed	<a href="#">Mark this as completed</a>
Visit Colleges & meet with reps @PRHS Not only should you visit college campuses and attend open houses, you should also meet with the visiting college reps at the high school. A complete list of scheduled college rep visits is available under "my colleges" in the "college" tab. Consider interviewing with college representatives as well.	11	not completed	<a href="#">Mark this as completed</a>
Complete NCAA form for D1 & D2 sports If you plan to play a D1 or D2 sport in college, you must register with the NCAA Clearinghouse by clicking the "home" tab, then clicking on the tab for NCAA Clearinghouse under "links"	11	not completed	<a href="#">Mark this as completed</a>
Attend the PTSA and RCC College Fairs	12	not completed	<a href="#">Mark this as completed</a>
Attend College Panel in the fall at PRHS	12	not completed	<a href="#">Mark this as completed</a>
Finalize list of schools to apply to Make sure to include safe schools (that are safe both academically and financially) to your list	12	not completed	<a href="#">Mark this as completed</a>

# Useful Websites

## College Searches

[www.collegeboard.com](http://www.collegeboard.com)  
[www.petersons.com](http://www.petersons.com)  
[www.embark.com](http://www.embark.com)  
[www.collegenet.com](http://www.collegenet.com)  
[www.princetonreview.com](http://www.princetonreview.com)

## Scholarships

[www.fastweb.com](http://www.fastweb.com)  
[www.collegeexpress.com](http://www.collegeexpress.com)  
[www.collegeboard.com/paying](http://www.collegeboard.com/paying)  
[www.srnexpress.com](http://www.srnexpress.com)

## Testing Services

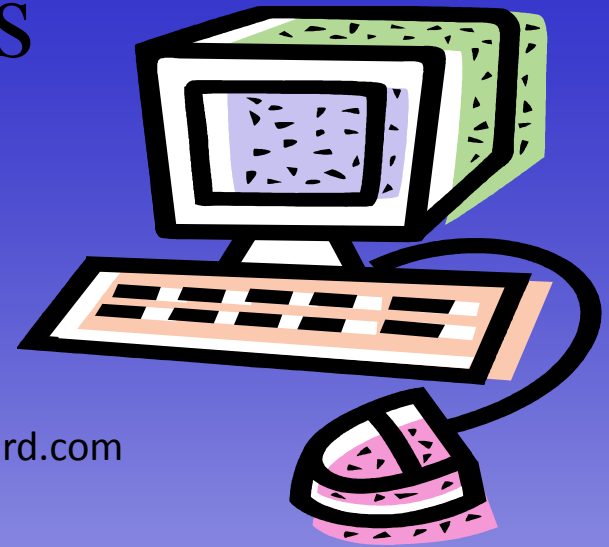
[www.collegeboard.com](http://www.collegeboard.com)  
[www.act.org](http://www.act.org)  
[www.ets.org](http://www.ets.org)

## Financial Aid

[www.fafsa.ed.gov](http://www.fafsa.ed.gov)  
[www.finaid.org](http://www.finaid.org)  
[www.hesaa.org](http://www.hesaa.org)  
<http://profileonline.collegeboard.com>  
[www.pin.ed.gov](http://www.pin.ed.gov)  
[www.fafsa4caster.ed.gov](http://www.fafsa4caster.ed.gov)  
<https://monmouth.adobeconnect.com/finaidnight1718>

## Other Sites

Common application: [www.commonapp.org](http://www.commonapp.org)  
Campus newspapers: <http://newslink.org/statcamp.html>  
Campus tours: [www.campustours.com](http://www.campustours.com)  
[www.ecampustours.com](http://www.ecampustours.com)  
Campus viewbooks: [www.campusview.com/](http://www.campusview.com/)  
College majors: [www.a2zcolleges.com/Majors/index.htm](http://www.a2zcolleges.com/Majors/index.htm)  
Test optional schools: [www.fairtest.org](http://www.fairtest.org)  
NCAA: [www.ncaaclearinghouse.net](http://www.ncaaclearinghouse.net)  
[www.eligibilitycenter.org](http://www.eligibilitycenter.org)



# Books



- ABC's of College Planning
- College Board's College Handbook
- College Counseling Sourcebook
- Peterson's Four Year Colleges
- Barron's Profiles of American Colleges
- The Insider's Guide to the Colleges
- Choosing the Right College – The Whole Truth About America's Top Schools
- Rugg's Recommendations on the Colleges
- Colleges That Change Lives
- College Majors Handbook
- Understanding Athletic Recruiting
- The K&W Guide to Colleges for Students with Learning Disabilities



**GOOD LUCK!!**

