

Sweetwater School District #1

Jodie Garner Chief Academic Officer
Debbie Varras Curriculum & Assessment Specialist
Ron Urbin Rock Springs Junior High Principal
Bryant Blake Black Butte High School Principal
Barb Rezzonico Farson-Eden School Principal

Who is Sweetwater #1?

- Fourth largest district in the state with 5051 students (22-23)
- Free & Reduced Lunch (FRL): 37% (22-23)
- English Language Learners (ELL): 348 students (22-23)
- Special Education (SpEd): 860 students (22-23)
- Graduation Rate: 76.29% (21-22)
- Dropout Rate: 5% in grades 9 - 12 (21-22)

Wyoming Accountability in Education System

- School Performance Reports (SPR)
- WDE every fall
- Ratings:
 - Exceeds Expectations
 - Meets Expectations
 - Partially Meeting Expectations
 - Not Meeting Expectations
- Drives School Improvement
- Provides targeted support for struggling schools

Overview of Wyoming Accountability in Education Act (WAEA)

School performance levels are determined from a variety of indicators and are calculated to help determine which schools are doing well and which schools are in need of support. WAEA looks at student growth, readiness, achievement, equity, and English language proficiency. Based on these indicators, schools receive one of four overall performance ratings: Exceeding Expectations, Meeting Expectations, Partially Meeting Expectations, or Not Meeting Expectations. For alternative schools, the measures are similar to traditional schools with Climate and Engagement as additional indicators.

- Achievement: The percentage of WY-TOPP test scores at the school that were proficient.
- Growth: Change in individual student math and English language arts scores in relation to their academic peers from year-to-year.
- Equity: Change in individual student math and English language arts scores in relation to their academic peers from year-to-year with student growth of student with low prior year test scores weighted more than student growth of students with average and above prior year test scores. This indicator intends to reduce achievement gaps.
- English Language Proficiency (ELP): A measure of English Learner's progress toward becoming proficient in the English language.
- Graduation Indicator: A high school completion indicator.
- Post-Secondary Readiness: Percent of graduates who were college, career, - or - military ready. (Hathaway, College credit, WorkKeys, ASVAB, ACT)
- Climate & Engagement: Climate survey results, participation rate and Student Success Plans

Accountability in Traditional Schools 8th Grades

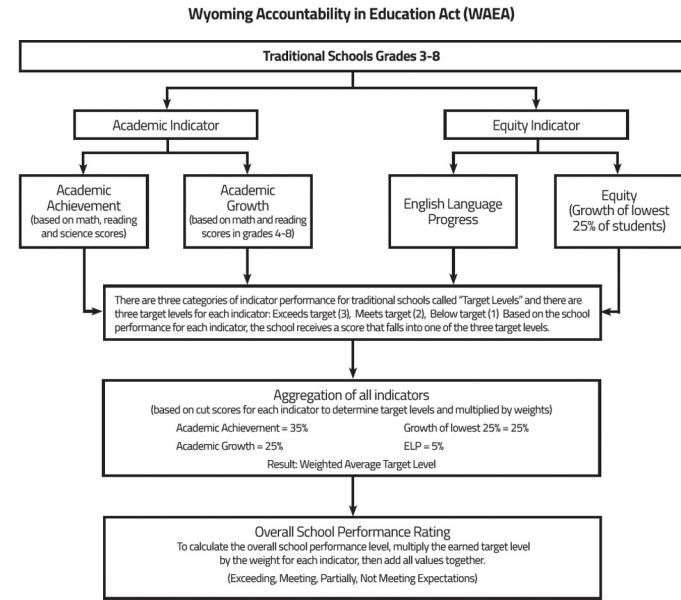
3rd-

WAEA Traditional School Achievement Indicator Score

- A school's achievement score is the percentage of proficient or better test scores on the state assessment earned by full academic year (FAY) students in the content areas of math, English language arts (ELA), and science. The percentage is rounded to the nearest whole number. FAY for the achievement indicator is defined as enrollment in the same school from the first weekday in October until a spring accountability date set by the Department during the WY-TOPP test window.

WAEA Grade Three Through Eight Achievement Target Levels.

	WAEA Performance Category Cut Scores		
	Below Targets	Meeting Targets	Exceeding Targets
Growth	< 48	>= 48 and < 60	>= 60
Equity	< 48	>= 48 and < 60	>= 60
Achievement	< 51	>= 51 and < 68	>= 68
ELP	< 36	>= 36 and < 60	>= 60



What are School Pairings?

“There are schools in Wyoming with grade three as their only tested grade. When schools have grade three as their only tested grade, they do not have data for the growth or equity indicators. For the purpose of accountability, these schools are “paired” with the school their students feed into after grade three. This ensures school performance levels are based upon more than just one indicator. The grade three achievement scores from these schools are combined with the achievement scores from their paired school when determining school performance ratings. In other words, the paired schools are treated as a single school for accountability calculations and both schools are assigned the same performance rating. In Wyoming, there are schools with grade configurations that do not include any tested grade. For example, LEAs organize their elementary schools so that students attend grade K-2 in one building and then move to a different building for grades 3-5. In this case, the school performance rating for the 3-5 school is also applied to the K-2 school. In these situations, collaboration across buildings is important to the success of the students involved.”

Sweetwater#1 Paired Schools

Desert View Elementary

Walnut Elementary

Eastside Elementary

Northpark Elementary

Sage Elementary

Stagecoach Elementary

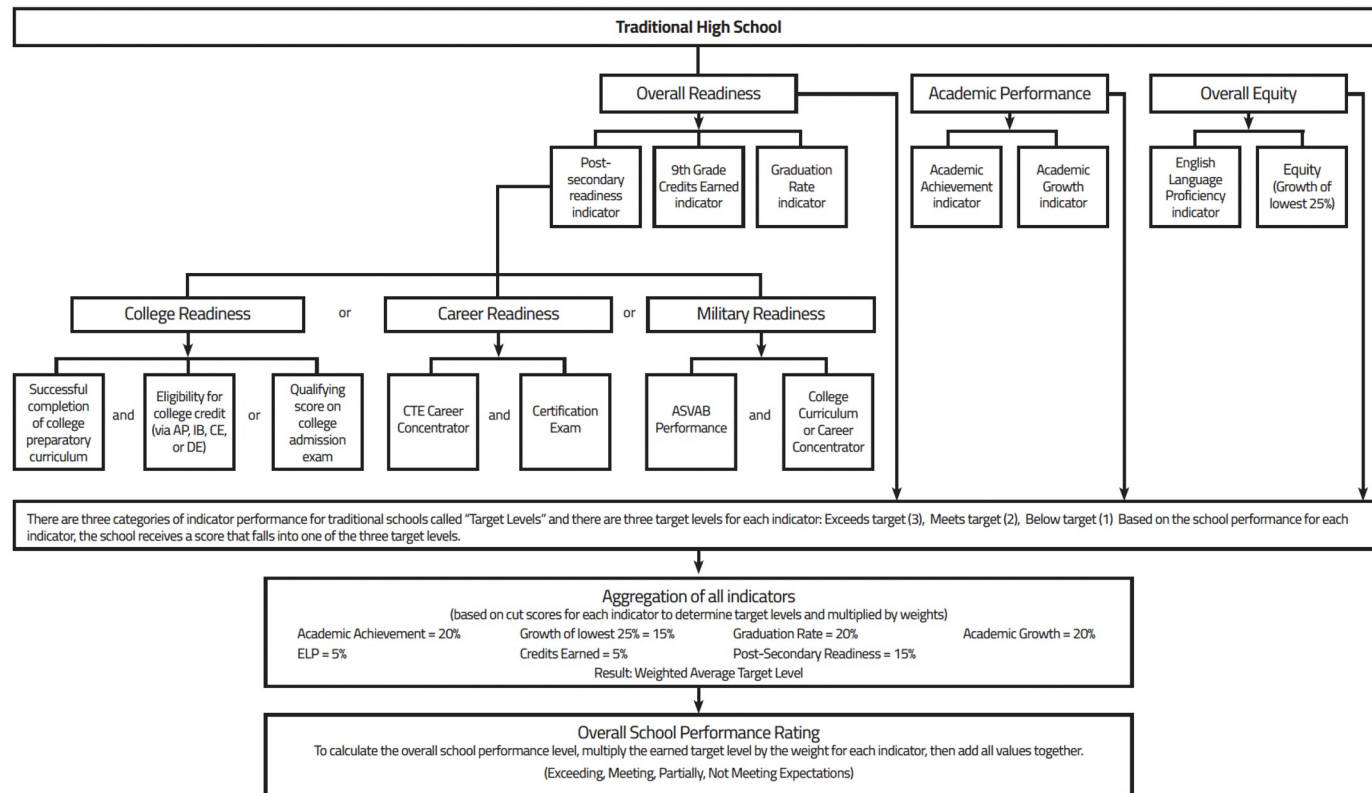
Pilot Butte Elementary

Accountability in Traditional High Schools

- The WAEA traditional high school achievement scores come from grades nine and ten.
- Academic Achievement
- Growth
- Equity
- English Language Proficiency
- Extended Graduation Rate
- Post-Secondary Readiness
- Grade 9 Credits Earned

	WAEA Performance Category Cut Scores		
	Below Targets	Meeting Targets	Exceeding Targets
Growth	< 49	>= 49 and < 60	>= 60
Equity	< 49	>= 49 and < 60	>= 60
Achievement	< 48	>= 48 and < 60	>= 60
ELP	< 19	>= 19 and < 40	>= 40
Graduation	< 85	>= 85 and < 93	>= 93
Post- Secondary Readiness	< 67	>= 67 and < 80	>= 80
Grade 9 Credits	< 88	>= 88 and < 95	>= 95

Wyoming Accountability in Education Act (WAEA)

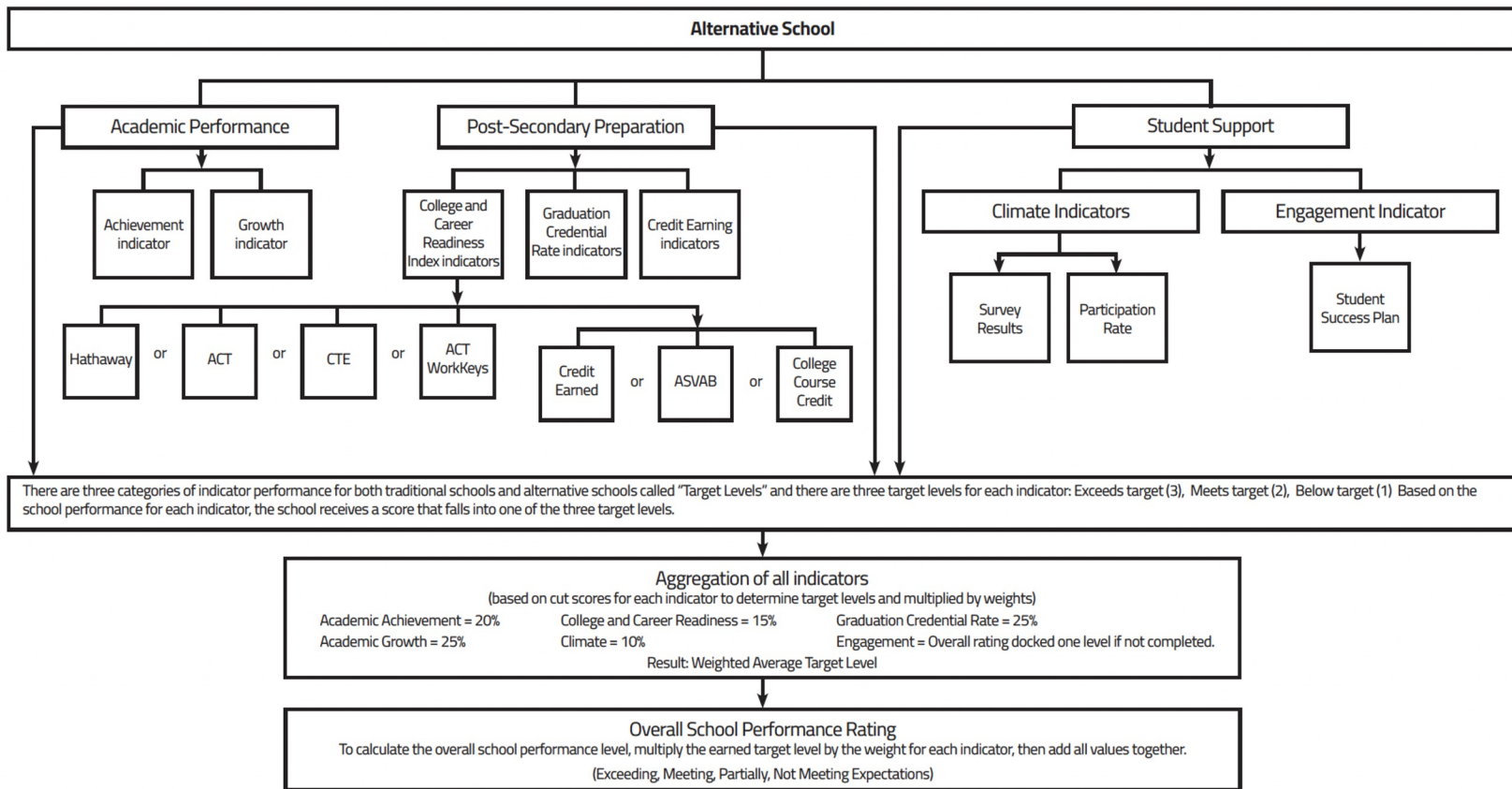


Accountability in Alternative High Schools

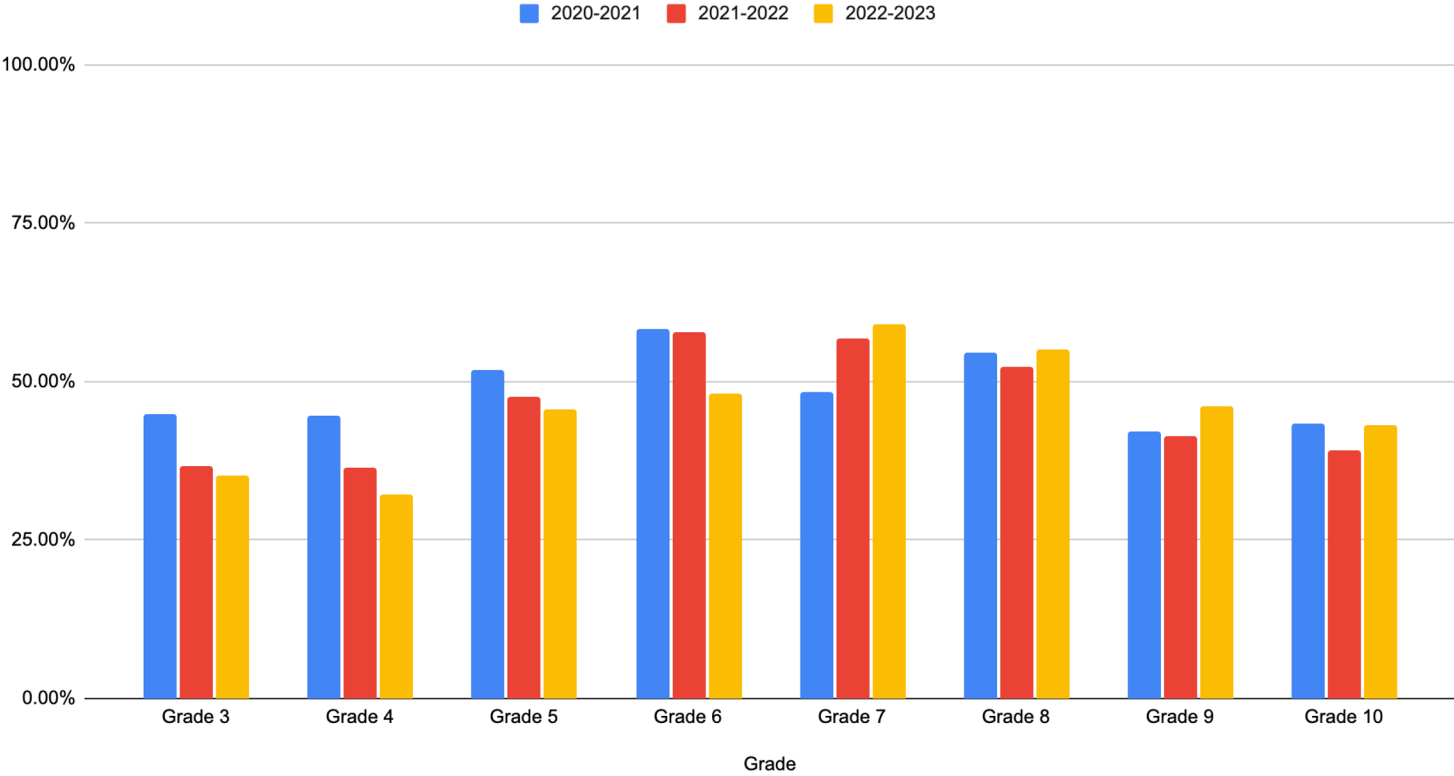
- Academic Achievement
- Growth
- Graduation Credential Rate
- College and Career Readiness
- Grade 9, 10, and 11 Credits Earned
- Climate
- Engagement

Indicators	WAEA Performance Category Cut Scores		
	Below Targets	Meeting Targets	Exceeding Targets
Growth	< 40	>= 40 and < 50	>= 50
Equity	N/A	N/A	N/A
Achievement	< 30	>= 30 and < 50	>= 50
ELP	N/A	N/A	N/A
Graduation	< 67	>= 67 and < 83	>= 83
College- Career Readiness	< 15	>= 15 and < 20	>= 20
Grade 9,10,11 Credits	< 67	>= 67 and < 83	>= 83
School Climate	< 2.8	>= 2.8 and < 3.3	>= 3.3

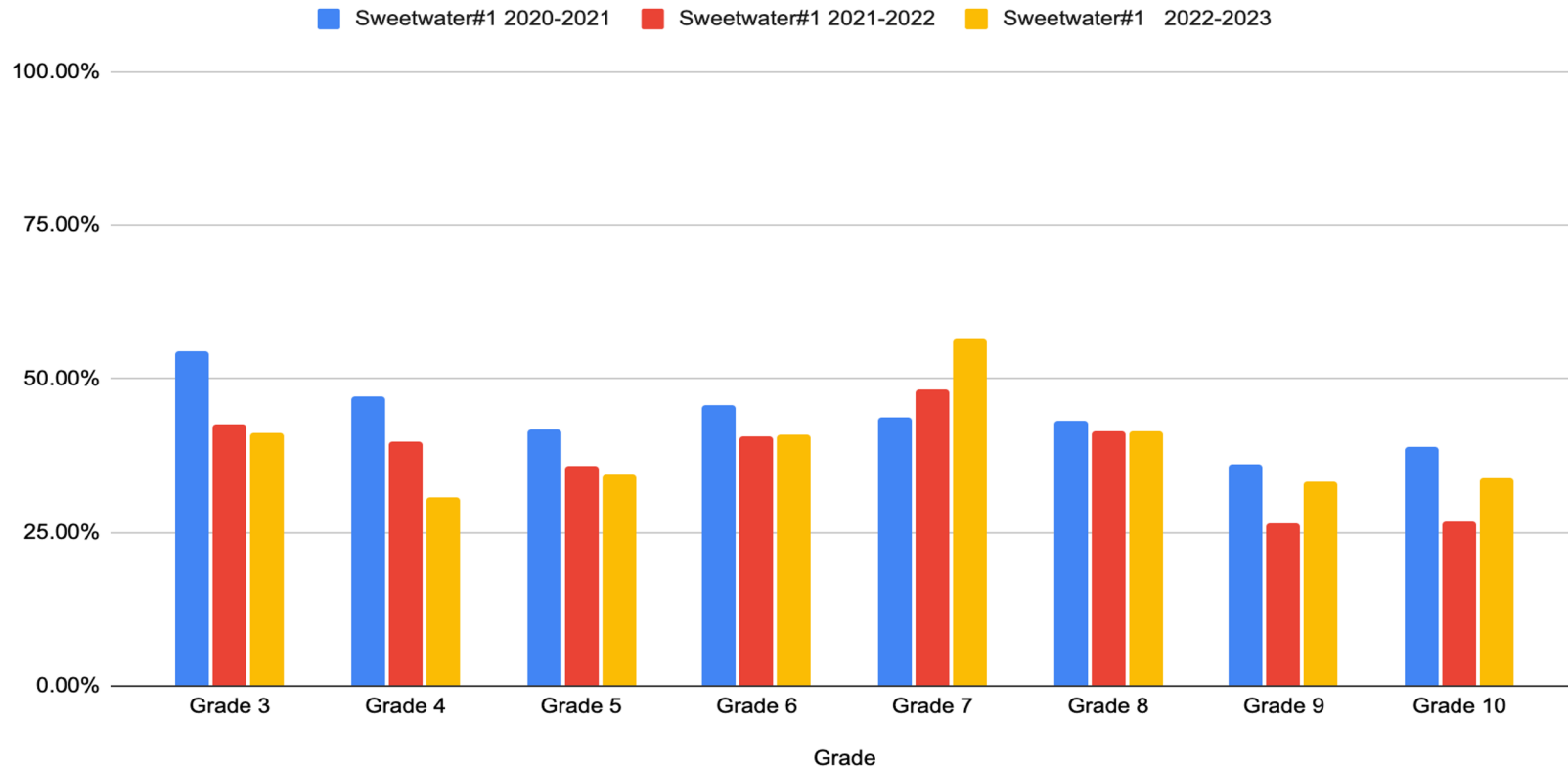
Wyoming Accountability in Education Act (WAEA)



Sweetwater County School District #1 WY-TOPP ELA Data Trends
Percent (%) Proficient & Advanced

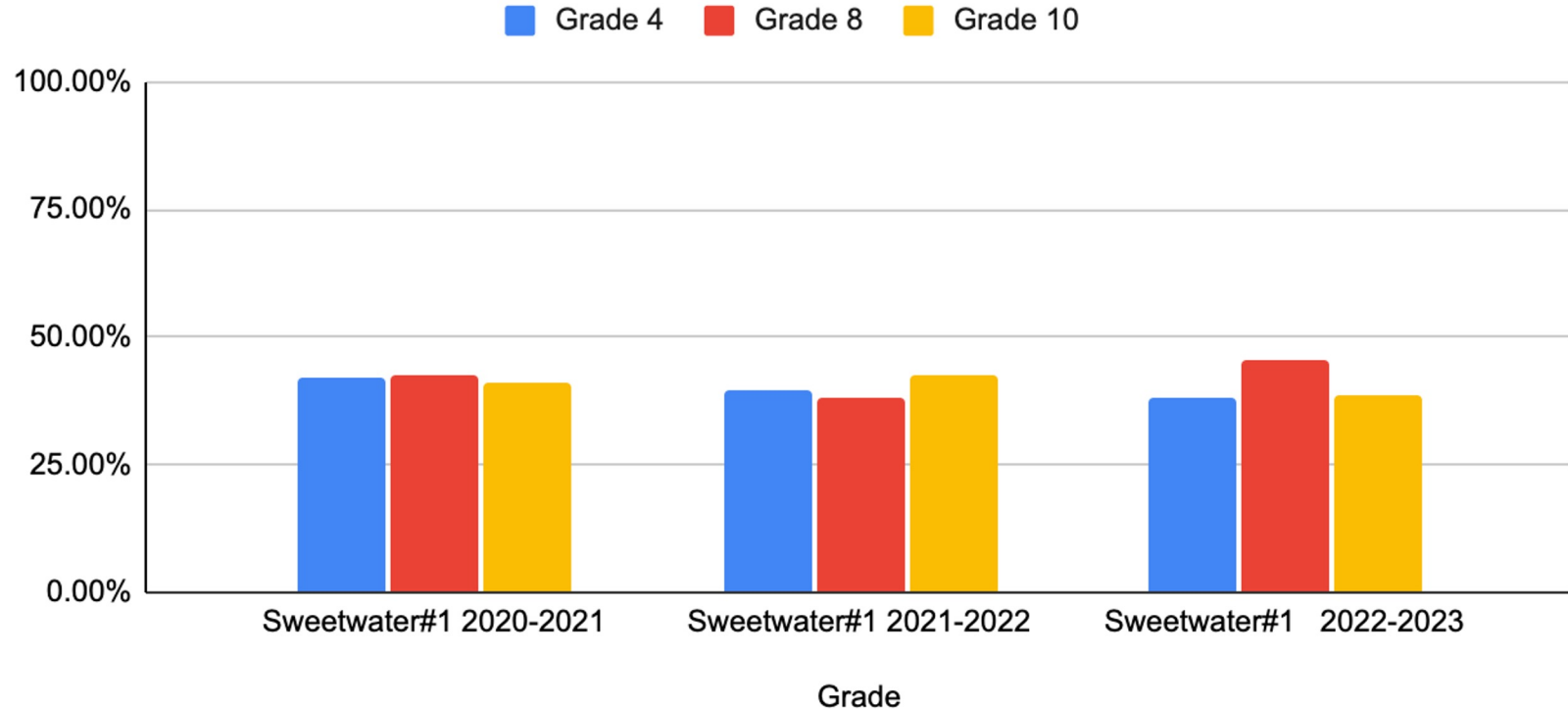


Sweetwater County School District #1 WYTOPP Math Data Trends Percent (%) Proficient & Advanced



Sweetwater County School District #1 WYTOPP Science Data Trends

Percent (%) Proficient & Advanced



Sweetwater County School District #1 School Performance Ratings (SPR)

Sweetwater County School District #1 School Performance Reports Summary 2022-2023	
School	2022-2023 Rating
Black Butte High School	Exceeding Expectations
Desert Elementary	Not Meeting Expectations
Desert Middle	Meeting Expectations
Desert View Elementary*	Not Meeting Expectations
Eastside Elementary*	Not Meeting Expectations
Farson Eden Elementary	Partially Meets Expectations
Farson Eden Middle School	Exceeding Expectations
Farson Eden High School	Exceeding Expectations
Northpark Elementary**	Not Meeting Expectations
Pilot Butte Elementary**	Not Meeting Expectations
Rock Springs High School	Not Meeting Expectations
Rock Springs Junior High School	Meeting Expectations
Sage Elementary**	Not Meeting Expectations
Stagecoach Elementary**	Not Meeting Expectations
Walnut Elementary*	Not Meeting Expectations
Paired Schools	
**Paired Schools **	

Sweetwater County School District #1 Three Year School Performance Reports Summary

SCHOOL	GRADES	22-23 RATING	21-22 RATING	18-19 RATING
Black Butte High School	9-12	Exceeding Alternative School Expectations	Exceeding Alternative School Expectations	Meeting Alternative School Expectations
Desert Elementary	K-6	Not Meeting Expectations	Partially Meets Expectations	Partially Meets Expectations
Desert Middle School	7-8	Meeting Expectations	Under Review	Meeting Expectations
Desert View Elementary	K-3	Not Meeting Expectations	Not Meeting Expectations	.
Eastside Elementary	4-6	Not Meeting Expectations	Not Meeting Expectations	.
Farson-Eden Elementary	K-5	Partially Meets Expectations	Partially Meets Expectations	Exceeding Expectations
Farson-Eden Middle School	6-8	Exceeding Expectations	Meeting Expectations	Partially Meets Expectations
Farson-Eden High School	9-12	Exceeding Expectations	Meeting Expectations	Exceeding Expectations
Northpark Elementary	K-3	Not Meeting Expectations	Not Meeting Expectations	.
Pilot Butte Elementary	4-6	Not Meeting Expectations	Not Meeting Expectations	.
Rock Springs High School	9-12	Not Meeting Expectations	Not Meeting Expectations	Not Meeting Expectations
Rock Springs Junior High	7-8	Meeting Expectations	Partially Meets Expectations	Meeting Expectations
Sage Elementary	K-3	Not Meeting Expectations	Not Meeting Expectations	.
Stagecoach Elementary	K-3	Not Meeting Expectations	Not Meeting Expectations	.
Walnut Elementary	K-3	Not Meeting Expectations	Not Meeting Expectations	.



Farson Eden School met or exceeded state achievement targets at all levels elementary through high school!

Farson Eden Middle School and High School have moved from Meeting Standards during the 21-22 school year to Exceeding Standards in the 22-23 school year

RSJH SUCCESS

- **PLC**
- **WY-TOPP BLUEPRINT CROSSWALK**
- **CROSS CURRICULAR TEAM**
- **JAG TIME**
- **GOAL SETTING**
- **POSITIVE RELATIONSHIPS AND RAPPORT WITH STUDENTS**
- **STRONG STAFF**

SUSTAINABILITY

- **CONTINUE PLC AND CROSS CURRICULAR WORK**
- **STUDENT ENGAGEMENT IN CLASSROOMS**
- **INTERVENTIONS AND ENRICHMENT**
- **SUPPORTING STAFF**

**THANK YOU STUDENTS, PARENTS, AND RSJH STAFF.
THIS WAS A FULL JAG COMMUNITY EFFORT!**

Black Butte High School Success

BBHS Staff Mindset

Teamwork- Everyone on our staff pitches in to support each other and our students.

Voice and Choice- Staff are committed to giving our students a voice on how things operate within the classroom and school. They are also providing students more choice on how they want to demonstrate their knowledge.

Hands on Learning- Staff are working on creating more authentic learning experiences through projects that are aligned to our priority standards



Interventions/Enrichments

DEN Time (Deliberate Engagement Now)

Mondays are designated days for team building activities and whole school events.

Tuesday-Thursday are our designated intervention and enrichment times. We are constantly moving kids around to meet their specific needs.



Black Butte High School Success

Systems for Success

- Guided Study Program
- DEN Time
- Friday School
- Credit Recovery
- Push in support from our grad coach, interventionist, and building sub



What's happening this year

Focus on improving school culture

- Student ran PBiS School Store through our Marketing/Entrepreneurship classes
- The introduction of Bear Bucks to incentivize positive behaviors throughout the school

Co-Teaching training and focus to improve instruction for all students

Continuing our work with Don't Ever Stop

Future Actions

- Grade Level Meetings & Data Digs
- Subject Area Meetings & Data Digs
- Don't Ever Stop Consultants
- Literacy Consultants
- Professional Development Opportunities
- Refining & Aligning Standards
- Supporting Students, Parents & Staff
- WYTOPP Authoring Tool
- Strategic Planning Committee
- District Preschool - Early Literacy Readiness
- Employee daycare
- CTE, HOCA, PSA Academies and pathways
- Student-centered classrooms
- Classroom - job embedded internships

